



In This Issue

2016 Postal Rates Delayed	47
Year of the Monkey (2016)	47
Canada Post News	48
Correction: \$10 Blue Whale	48
Study Group Business	49
CP Abolishes Free Shipping	49
Canada Post Fuel Charge.	49
Corgis on Canadian Booklet	49
OFDC Catalogue	49
Canada 2015 Stamp Program	50
Canada 2016 Stamp Program	51
2016 Definitives	52
2015 UNESCO FDCs	53
Metered Addressed Admail	64
New Meter Postal Rates (2016)	65
Santa Claus Letter "Stamps"	66
Elizabethan II Marketplace.	66

Feature Articles

Constant Plate Flaws on the 1972 Landscape Definitives – New Findings	54
Wilding and Associated High-Value Definitives: Guide-Dot Varieties of Lower-Left Inscription Blocks	56

ESG Book Offer

Canada's Caricature and Landscape Issues	51
---	----

Copies distributed: 128



Corgis Appear on Canadian Booklet
See page 49

2016 Postal Rates Delayed



In the last *Corgi Times* we reported that Canada Post would be raising postal rates on January 11, 2016. That did not happen.

Canada Post has cancelled the plans for a 5-cent hike on domestic stamps citing a pending government review of the crown corporation. The 2015 Canadian federal election was held on October 19, 2015, to elect members to the House of Commons of the Canadian parliament. The Liberal Party, led by Justin Trudeau, won 184 seats, allowing it to form a majority government (defeating the Conservative Party, in power since 2006).

The post office said stamps, which are regulated by the government, would stay at the current rate of 85 cents for a letter mailed within Canada, if bought in a booklet. It is \$1 for a single stamp. However, the crown corporation said rates for other services including parcels and direct mail will see "competitive rates changes" take place in early 2016. Meter rates, which affect many businesses, did rise on January 11.

More on this rate delay can be read on-line here: <http://www.thestar.com/business/2015/12/16/canada-post-cancels-5-cent-price-increase.html>

The cancellation of the January 2016 postal rate increase has delayed the new series of "Birds of Canada" definitives which were expected on January 11.



Year of the Monkey (2016)

The delay in the January 2016 postal rate increase (see above) affected the release date of this years Lunar New Year issue (Year of the Monkey).

The Permanent™ rate stamp was released, as scheduled, on January 11. However, the International rate stamp was delayed until February 1. It is not known whether Canada Post delayed the start of printing of the International rate stamp immediately after the change in government or if stamps were printed at the proposed rate of \$2.60 (and subsequently destroyed).

In any event, the 2016 Year of the Monkey stamps have two different issue dates this year.



Who are We?

We are the Elizabethan II Study Group under the auspices of the British North America Philatelic Society (BNAPS) — The Society for Canadian Philately.

Our journal, the *Corgi Times* is published 6 times a year.

BNAPS

Website: www.bnaps.org

Membership information:

Andy Ellwood, Secretary
10 Doris Avenue
Gloucester, ON K1T 3W8
Canada
E-mail:
andy_ellwood@rogers.com

Elizabethan II Study Group

Founder: John D. Arn, OTB

Chairman:

Robert J. Elias
10 Thornhill Bay
Winnipeg, MB R3T 3W5
Canada

Treasurer:

Derek Fleming
854 Silver Birch Trail
Mississauga, ON L5J 4C1
Canada

Corgi Times Index Robert McGuinness

Market Report vacant

Website:

www.adminware.ca/esg

Annual Dues

Canadian addresses is C\$15.00. US and Canadian addresses option of US\$15.00. All others US\$19.00.

Please make cheques payable to "The Elizabethan II Study Group" and send to Robin Harris, Editor at the address listed to the right.

Articles with no by-line are written or compiled by the Editor. All articles are ©2016 by the author and/or the Elizabethan Study Group.

Canada Post News

Here is what Canada Post is up to these days...

► 2015/4 Quarter Pack

The fourth quarterly pack of 2015 finally showed up late in the year. The package contains the stamps released in October and November. The 'high-ish' \$30.95 face value is primarily because the quarterly pack *includes* a sealed pack of the six NHL® Goalie souvenir sheets, each with a value of \$1.80.

Only two different issues, comprising 18 different designs, are included:

- NHL® Goalies
- Christmas



Correction: \$10 Blue Whale Reprint?

In the last issue of *Corgi Times* we noted that there *might* be a possible reprint on the \$10 Blue Whale stamp.

We stand corrected. We were premature in making this suggestion. The information we received was false. As far as we can confirm, **there is no new \$10 reprint at this time.**



Corgi Times

Editor:

Robin Harris
PO Box 2243
Beausejour, MB R0E 0C0
Canada
E-mail: corgi@adminware.ca
Phone: (204) 268-9395

Back Issues:

Sample or single issues C\$3.50, US\$3.50 each.

(Six issues per volume) Vol I through V C\$17/vol, US\$17.00/vol; Vol VI C\$21, US\$21; Vol VII C\$18.50, US\$18.50; Vol VIII to XIII C\$20/vol, US\$20/vol

Corgi Times is produced with Adobe InDesign CS6® for Windows. Manuscripts should be submitted to the Editor at the address above. Electronic format is preferred but not required. Scanned illustrations (300dpi, colour, actual size, JPEG or TIFF, black background) should be sent as separate files from text files. Lower quality images will *not* be printed and will likely result in the article not being printed.

Study Group Business

❖ New members

- Greg Barcroft (ON)
- Gaëtan Paradis (QC)

Planning Calendar

This is a listing of major exhibitions and bourses with a large content of both Canadian Exhibits and Canadian dealers.

The goal is to list events far in advance to encourage either exhibiting or attendance and preferably both.

2016

BNAPLEX 2016: Sep 30–Oct 2, 2016 in Fredericton, NB

Canada Post Abolishes Free Shipping

by: Robin Harris

A letter addressed to 'valued customer' from Jim Phillips, Director, Stamp Services, Canada Post dated 'October 2015', starts out by saying "Canada Post is introducing free shipping." Effective October 29, 2015, all orders placed with Canada Post *that are over \$25*, whether ordered by phone or on-line, will be "no-charge shipping".

However, any order *under* \$25 (pre-tax) will now be charged a \$4.99 shipping fee.

Most of the items I order on-line with Canada Post are for items that are simply not carried by the post offices I frequent in my travels, such as the prepaid post cards and the *Stuck on Stamps* packages. So, most of the orders I place with Canada Post are under \$25. I find ordering on-line to be very convenient. However, based on the new 'no-charge shipping' policy, I will now be charged an extra \$4.99 for all of these under-\$25 orders.

Do I want to wait until I have over \$25 to get the "now" free shipping before ordering? I no longer have a choice; I am certainly not going to pay an extra \$4.99 when ordering a \$2.50 prepaid post card!

Canada Post Fuel Charge

by: Robin Harris

When calculating/mailling a parcel via Canada Post, there is the base price, additional coverage, options, fuel surcharge and tax. With gas prices at lows not seen for quite sometime, there has been some 'talk' in an on-line stamp newsgroup that the fuel charge seems to be as high (or even higher!) today as it has ever been.

I found a post office receipt for a package that I mailed back in October of 2013. The package was for a 3.1kg box with measurements of 11.5" x 9" x 6". Back in 2013 the fuel charge was \$1.15.

When I looked this rate up today (early February 2016) the base price is \$18.61 but the fuel charge is only 65 cents. This certainly suggests that Canada Post has *decreased* the fuel charge on parcels with the lower cost of today's gas.

Should there even be a fuel charge added onto a base price postal rate? I'm sure many would say "no"!

Corgis Appear on Canadian Booklet

The new Queen Elizabeth II booklet released January 11, 2016 includes silhouettes of a Corgi as the 'colour dots' in the right-hand selvedge.



OFDC Catalogue

by: Robin Harris

The other day I needed to check something about a Canada Post official first day cover. Of course I used ESG member's Andrew Chung's new book (see the last *Corgi Times* for a special offer to ESG members).

Wow! What a fantastic resource this book is. It had the answer I was looking for, and much more. There is some great information just waiting to be read.



Canada Post 2015 Stamp Program (partial / last time)

Shaded entries are changed/new from the last time we presented this list.

Issued	Description	Scott#
Mar 2	Pansies (2 designs) <ul style="list-style-type: none"> • Permanent™ (85¢), self-adhesive booklet of 10 • Permanent™ (85¢), self-adhesive roll of 50 • \$1.70 gummed souvenir sheet of 2 • \$2.50 postal cards (one of each design) 	2812–13 2810–11 2809
Apr 8	Canadian Photography (7 designs) <ul style="list-style-type: none"> • Permanent™ (85¢), self-adhesive booklet of 10 • \$1.20, self-adhesive booklet of 6 • \$2.50, self-adhesive booklet of 6 • \$4.20 gummed souvenir sheet of 3 • \$3.75 gummed souvenir sheet of 4 • \$2.50 postal cards (one of each design) 	2816–20 2821 2822 2814 2815
Apr 13	Dinosaurs (5 designs) <ul style="list-style-type: none"> • Permanent™ (85¢), self-adhesive booklet of 10 • \$4.25 self-adhesive souvenir sheet of 5 (stamps with embossing) • \$34.00 uncut press sheet of 8 souvenir sheets (stamps with embossing) 	2824–28 2823
May 2	Love Your Pet (5 designs) <ul style="list-style-type: none"> • Permanent™ (85¢), self-adhesive booklet of 10 • \$4.25 gummed souvenir sheet of 5 	2830–34 2829
May 3	In Flanders Fields <ul style="list-style-type: none"> • Permanent™ (85¢), self-adhesive booklet of 10 • \$4.25 gummed pane of 5 	2836 2835
May 6	FIFA Women's World Cup <ul style="list-style-type: none"> • Permanent™ (85¢), self-adhesive booklet of 10 	2836
Jun 18	Weather Wonders (5 designs) <ul style="list-style-type: none"> • Permanent™ (85¢), self-adhesive booklet of 10 • \$4.25 gummed souvenir sheet of 5 • \$25.50 uncut press sheet of 6 souvenir sheets 	2839–43 2838
Jul 3	UNESCO World Heritage Sites in Canada <ul style="list-style-type: none"> • \$1.20, self-adhesive booklet of 6 (3 designs) – recalled Jul 7 • \$2.50, self-adhesive booklet of 6 (2 designs) – recalled Jul 7 • \$8.60 gummed souvenir sheet of 5 – recalled Jul 7 • \$2.50 postal cards (one of each design) – recalled Jul 7 	2845–47 2848–49 2844
Jul 10	Alice Munro <ul style="list-style-type: none"> • Permanent™ (85¢), self-adhesive booklet of 10 	2850
Aug 6	Franklin Expedition <ul style="list-style-type: none"> • Permanent™ (85¢), self-adhesive booklet of 10 (2 designs) • Permanent™ (85¢), gummed pane of 16 (2 designs) • \$2.50, self-adhesive booklet of 6 • \$2.50 gummed souvenir sheet of 1 • \$30.00 uncut press sheet of 12 souvenir sheets 	2854–55 2851–52 2856 2853
Aug 21	UNESCO World Heritage Sites in Canada – Corrected image <ul style="list-style-type: none"> • \$1.20, self-adhesive booklet of 6 (3 designs) • \$8.60 gummed souvenir sheet of 5 • \$2.50 postal card (corrected design) 	2858 2857
Sep 9	Queen Elizabeth II longest reign <ul style="list-style-type: none"> • Permanent™ (85¢), self-adhesive booklet of 10 	2859
Sep 14	Haunted Canada (II) (5 designs) <ul style="list-style-type: none"> • Permanent™ (85¢), self-adhesive booklet of 10 • \$4.25 gummed souvenir sheet of 5 • \$34.00 uncut press sheet of 8 souvenir sheets • \$2.50 postal cards (one of each design) 	2861–65 2860
Sep 28	Canada Post Community Foundation <ul style="list-style-type: none"> • Permanent™ (85¢) + 10¢ semi-postal, self-adhesive booklet of 10 	B22
Oct 2	NHL: Great Canadian Goalies (six designs - Dryden, Brodeur, Bower, Parent, Worsley, Esposito) <ul style="list-style-type: none"> • Permanent™ (85¢), self-adhesive booklet of 6 • \$5.10 gummed souvenir sheet of 6 • \$1.80 souvenir sheets (6 different) 	2867–72 2866 2873–78
Nov 2	Christmas <ul style="list-style-type: none"> • Permanent™ (85¢) Madonna and Child, self-adhesive booklet of 12 • Permanent™ (85¢) Moose, self-adhesive booklet of 12 • \$1.20 Beaver, self-adhesive booklet of 6 • \$2.50 Polar Bear, self-adhesive booklet of 6 • \$4.55 souvenir sheet of 3 	2880 2881 2882 2883 2879

Canada Post 2016 Stamp Program

Issue dates are subject to change by Canada Post. Shaded entries are changed/new from the last time we presented this list.

Issued	Description	Scott#
Jan 11	Year of the Monkey <ul style="list-style-type: none"> Permanent™ (85¢) pane of 25 Permanent™ (85¢), self-adhesive booklet pane of 10 \$2.50 postal card 	
Jan 11	UNESCO World Heritage Sites in Canada <ul style="list-style-type: none"> Permanent™ (85¢), self-adhesive booklet of 10 (5 designs) Permanent™ (85¢), self-adhesive booklet of 30 (5 designs) \$4.25 gummed souvenir sheet of 5 	
Jan 11	Queen Elizabeth II <ul style="list-style-type: none"> Permanent™ (85¢), self-adhesive booklet of 10 	
Feb 1	Year of the Monkey <ul style="list-style-type: none"> \$2.50, self-adhesive booklet pane of 6 \$2.50 souvenir sheet \$2.50 (Monkey) and 2\$.50 (Ram) "transitional" souvenir sheet \$30.00 uncut press sheet of 12 souvenir sheets \$2.50 postal card 	
Feb 1	Black History Month: No. 2 Construction Battalion <ul style="list-style-type: none"> Permanent™ (85¢), self-adhesive booklet of 10 	

Canada's Caricature and Landscape Issues (ESG book offer)

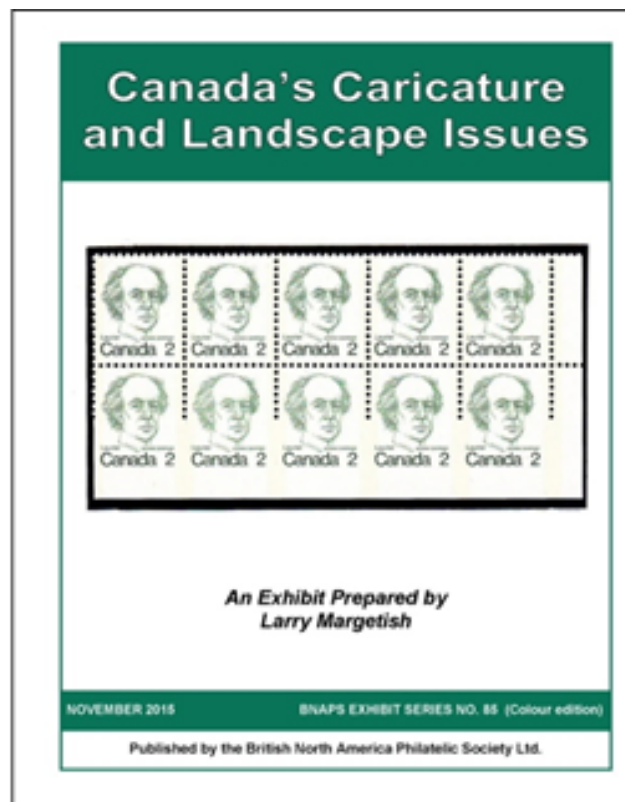
The Elizabethan II Study Group is pleased to offer members special pricing on the latest BNAPS Exhibit Series publication:

Canada's Caricature and Landscape Issues, by (ESG member) Larry Margetish, 2015. Spiral bound, 126 pages, 8.5x11, colour. ISBN: 978-1-927119-57-0. Published by BNAPS; Stock #B4h923-85-1. BNAPS Exhibit Series #85. List Price C\$60.00 **ESG Member Price \$30.00**

The stamps of the Caricature and Landscape series replaced the Centennial series. Released between March 1972 and October 1973, they remained in use until 1979. This period saw many changes in the stamps themselves, including the first multi-coloured definitives, definitives without an image of Queen Elizabeth, and standardized tagging. On the mailing side, postal codes were introduced, experiments with bar codes were begun, and many postal rate changes implemented. Larry Margetish's *Canada's Caricature and Landscape Issues*, a classic treatment of this modern issue, includes pre-production material, plates, printing and paper varieties, errors and freaks, and postal history.

A retired computer programmer, Larry has been collecting the Caricature and Landscape stamps since they were first issued. His first exhibit, prepared in the early 1980s, has grown from simple beginnings into what is now a comprehensive exhibit of the Caricature and Landscape definitive stamps of Canada. At the Spring National Show 2013 in Edmonton the exhibit received Gold, the Grand Award and the BNAPS Best BNA Exhibit Award. Most recently, at BNAPEX 2015 NIAGARA FALLS, it received Gold and the John D. Arn 'White Queen' Award for the Best Exhibit of QEII stamps and/or postal history.

To take advantage of this offer, you must be a current paying ESG member, and must send your order to our treasurer, Derek Fleming, 854 Silver Birch Trail, Mississauga, ON L5J 4C1, Canada. You must include your BNAPS number, your mailing address, and the title of the publication you wish to order. Derek will then order the book on your behalf from the BNAPS Book Department. The ESG will subsidize the remainder of the cost, including sales taxes, postage and handling. Limit of one copy of each book per ESG member. This is an ESG initiative, not a BNAPS one. To take advantage of this offer you must request your book via Derek. You may pay for your order by cheque, payable to the ESG, or by PayPal by addressing your payment to ESGTreasurer@rogers.com. Note that PayPal payments will appear on members credit card and/or bank statement as "Paypal*Elizabethan".



2016 Definitives

A wide range of new definitives were expected on January 11, 2016 to go along with proposed new postal rates to take affect on the same date. However, the proposed rate change was delayed indefinitely. Canada Post, however, did release new Permanent™-rate definitives — all being sold at the old/current rate of 85¢ per stamp (but only available in full booklets).

Queen Elizabeth II

A new Queen Elizabeth II stamp features a black-and-white photograph commissioned for Her Majesty's 88th birthday. This design is in stark contrast to the previous six multi-coloured QEII "hat" images that have been around since 2003. The stamp was released in booklet panes of 10 only.

The tagging, as illustrated in the January-February 2016 *Details* magazine (page 14) shows a repeating crown over ER, along with a single Corgi silhouette. 'Hidden' micro-printing is also present, found around the outside of the necklace.



UNESCO World Heritage Sites in Canada

Five UNESCO World Heritage Sites in Canada definitives were also released on January 11. These appeared in booklets of 10 and 30, as well as a souvenir sheet of five.

These five designs have appeared *previously* on Canadian stamps, back in 2014, as \$1.20 USA-rate and \$2.50 International-rate commemoratives (Scott 2739-2744). There are three noticeable differences between the commemorative issue of 2014 and the new definitive stamps of 2016: size, denomination, and identifying text.

The original commemorative stamps identified each stamp with descriptive text, just above the 'CANADA' in the lower left corner of the design. Due to the much smaller size, the new definitives have this descriptive text 'hidden' within the design in the form of micro-printing (illustrated on the next page). The tagging shows a repeating UNESCO logo.

It is interesting to note that Lowe-Martin is now the printer for these definitives. Canadian Bank Note had been the printer of these types of definitives for the last ten years or so. Is CBN getting out of the stamp printing business?

2016 definitives



2014 commemoratives





2015 UNESCO FDCs

In the last *Corgi Times* (Nov-Dec 2015) we asked for your opinion of the home-made 2015 UNESCO first day covers. We received a grand total of two responses from our membership of 126 mailings. [Ed. very disappointing response, to say the least.]

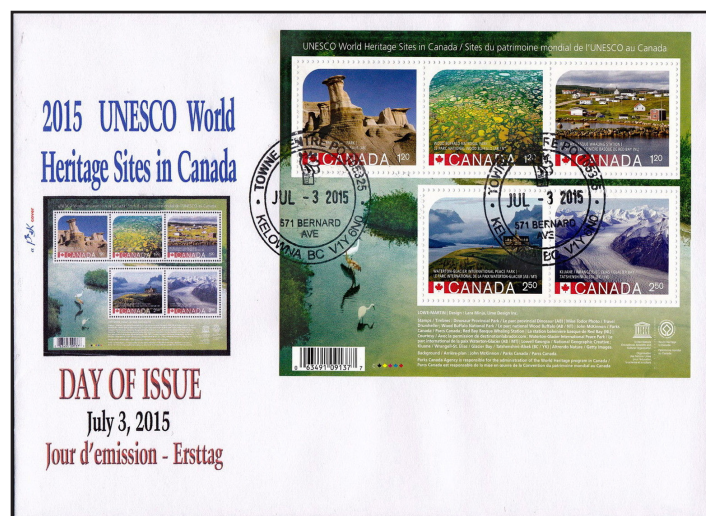
[GG wrote:] Robin, the after the fact FDCs are "not" real FDCs in my opinion. They are not a legitimate FDC.

[GN wrote:] HI Robin

I may be taking a purest view of FDCs but if they are not issued by the Post Office then they are not an official FDC. Ever since the Post Office started to issue FDCs with a special cachet these should be the only official FDC. The special cachet that is used on FDCs issued by the post office is not available at postal outlets. From my point of view the only true FDC's must be issued on the special envelope designed for each new stamp release along with the specially designed cachet.

In the days prior to the post office issuing FDCs on special envelopes and matching cachet you would send in your own self addressed envelopes and the post office applied the new stamp and used a standard first day of issue cachet but again that cachet I believe was not available at individual postal outlets.

The covers depicted in the article although appear to be on a special first day of issue envelope. The application of the stamps appear sloppily applied and positioning varies greatly which I would not expect to find from comparing the normal FDCs released by the post office. Not sure how one would get the FDC envelope design unless you actually got one from the post office. Based on what is shown in "Details" the envelope also appears to be self constructed. I would say that all of the 17 items shown in the article I would view as being fake. Also the Post Office did not issue an FDC for the 3 individual stamps from the booklet that was recalled, only the S/S was issued as an FDC. I would say that given the vast change in position of the cachet let alone the date alignment leads me to believe that these are all fake FDCs.



Constant Plate Flaws on the 1972 Landscape Definitives – New Findings

by: Mirko Zatka

The 1972 medium value definitive (Scott #594 – 598), issued as a replacement to the Centennial 10¢ – 50¢ values, form an interesting study area due to the number of papers, perforations, tagging types, etc. produced during their period of use from 1972 – 1977. The *Unitrade Specialized Catalogue of Canadian Stamps* currently lists 65 different types among the 5 values (not including missing tagging and colour shifts), and I have several others to add since the last major update of this issue a few years ago. Some of the experimentation that started during the Centennial era continued into this issue, and British American Banknote Company, the printer, seemed to have loose criteria on what paper to use. As we have seen, some of the printings using a certain paper are very rare and sought-after.

Over the years I have accumulated a significant stock of this issue in singles and blocks, corner / plate blocks, and full panes. Approximately five years ago I also had the good fortune to be able to examine (and purchase from) a very significant, duplicated, sheet holding of this issue, with many different papers and tagging represented including (at that time) a number of new ones. No, this was not Bileski stock but rather an estate from a Calgary collector whose annual purchases were so large that Canada post actually sent him a Christmas card every year (and a sympathy card to his family when he passed away!).

Much of this material has lain unexamined on my book shelves, and it was not until this year's Christmas period that I found some time to look at it. Some interesting varieties were identified that are not temporary or semi-constant, but affect the entire set of printings using a certain plate – hence constant plate flaws.

In having a very close look at the 10¢, 20¢ and 25¢ values, I didn't find any constant flaws on the panes. Though there are a number of very subtle differences between the stamps on a pane on the photogravure plate, they are too minor to list separately and identify. All of these small variations consist of differences in the colour screen. No discernible differences in the intaglio plate were found.

15¢ Mountain Sheep

The 15¢ value shows one constant flaw on the photogravure plate, in position 94, as shown in Figure 1:

It occurs on ALL printings (Type 1 and 2), including Plates 1 and 2 (Scott #595 and 595a), and appears on all different papers known on this value. The amount of brown ink showing can vary somewhat depending on how aligned the brown colour is with the intaglio plate. It is found only on some panes though, representing one of the three panes that made up the full BABN press sheet. It does NOT occur on the pane with the 'scratch in mountains' flaw in position 10 (Unitrade #595xii / 595xiii). This raises another interesting observation (not sure if reported previously) that the same photogravure plate must have been used on both intaglio plate printings. By comparison, the Plate 2 printings no longer show the scratch in the mountain plate flaw.



Figure 1
Brown "soil" in third 'a' of Canada

50¢ Seashore

The 50¢ value was found to be even more interesting, with six different constant flaws found on the panes in the photogravure plate. Four are found only on Type 1 printings, while two exist only on the Type 2 printings. The latter occurs on both plates (Scott #598 and 598a).

Two of these consist of constant, extra, blue/violet blue dots ("rocks in water"), one is an extra blue screen flaw ("island in the water"), and the last one a set of "x" scratches, again in the blue ink that makes up water in the image. They are illustrated as Figures 2-7:

Type 1 flaws:

As with the 15¢ value, each of these (Figures 2–5) occurs only on some panes, meaning they are found on one of the three different panes on the press sheet (bundles of 100 plate blocks confirm the frequency). Flaws shown in Figures 2, 4 and 5 occur on the same pane, while the flaw in Figure 3 is found on a different pane.

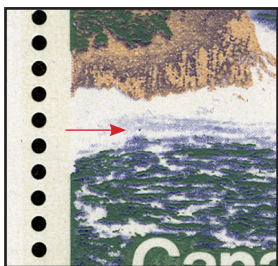


Figure 2
Plate 1, Type 1
Position 11, “rock” in water



Figure 3
Plate 1, Type 1
Position 19, multiple “x” in water



Figure 4
Plate 1, Type 1
Position 95, “rock” in water

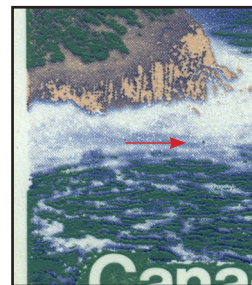


Figure 5
Plate 1, Type 1
Position 75, “island” in water

Type 2 flaws:

Figures 6-7 below each come from the Type 2, perf 12.5 x 12 issues. Figures 8-9 below are from the equivalent Scott #598a, perf 13.3 x 13 printings:

I have a limited number of full panes of the 50¢ values, so there may be more constant flaws on these that I didn’t see. This shows that even some 40+ years after issue, new varieties can be found that enrich the study of definitive issues that during their multi-year use see a number of reprints and plate changes. Good luck in hunting for additional ones – it would be helpful to have these reported in the *Corgi Times* as well!

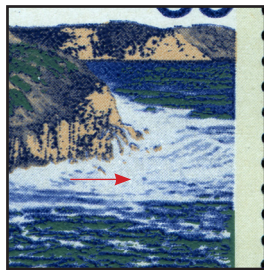


Figure 6
Plate 1, Type 2
Position 100, “rock” in water



Figure 7
Plate 1, Type 2
Position 91, “rock” in water



Figure 8
Plate 2, perf 13.3 x 13
Position 91



Figure 9
Plate 2, perf 13.3 x 13
Position 100

Wilding and Associated High-Value Definitives: Guide-Dot Varieties of Lower-Left Inscription Blocks

by: Robert J. Elias

Wilding and associated high-value definitives were produced by the Canadian Bank Note Company, Limited [1]. Guide dots were engraved in margins of the printing plates to mark positions for cutting the printed sheets into post-office panes. Unless trimmed off during cutting, such dots are visible in the selvage. This research on lower-left inscription blocks reveals that some of the original plates used for initial printings were later modified by the addition of guide dots in different locations. The original position of guide dots was verified by an examination of dated proofs at Library and Archives Canada, in Ottawa. The date of introduction of printings from modified plates is estimated based on their paper texture [2] and, if relevant, the presence of phosphorescent Winnipeg tagging. Modification of original plates by the addition of new guide dots was probably done when the plates were refurbished for later printings.

Thousands of lower-left inscription blocks were examined for this study, representing all plates of the Wilding and associated high-value definitives. Based on specimens with sufficiently wide selvages, guide-dot varieties due to the modification of plates were recognized for the following issues: 3¢ Wilding (plates 1 and 2), 4¢ Wilding (plate 10 of 19 plates), 7¢ Canada Goose (plates 1 and 2), 10¢ Inuk & Kayak (plates 2, 3 and 4 of 5 plates), 20¢ Forestry Products (plates 1 and 2), 20¢ Pulp & Paper Industry (plates 1 and 2 of 4 plates), 50¢ Textile Industry (plates 1 and 2) and \$1 Totem Pole (plates 1 and 2). Such varieties were not found for any plates of the other Wildings (1¢, 2¢, 5¢ and 6¢), the 15¢ Gannet and 25¢ Chemical Industry.

The guide-dot varieties are illustrated in Figures 1 to 16. Green arrows indicate dots that were present in the original plate (State 1), orange arrows indicate dots that were added during modification of the plate (State 2) and in one case a purple arrow indicates a dot that was added during a second modification of the plate (State 3). The figure captions provide information on the date of proof and date of issue of the original state, the date of introduction of the subsequent state or states, the type of paper texture and, if relevant, the presence of tagging.

This research opens a new area of philatelic collecting and study in the Canadian Wilding era — guide-dot varieties indicating different states of certain plates. When examining inscription blocks, keep in mind that the selvage must be sufficiently wide to verify the presence or absence of guide dots on the printing plate. Such dots were sometimes trimmed off when the printed sheets were cut into panes.

[1] Harris, D.R. 1998. *1952-53 Karsh, 1954-62 Wilding, 1962-66 Cameo Definitives*.

[2] Elias, R.J. 2014. Canadian Wilding and Associated High-Value Definitives: Paper Texture, Printings, Periods of Use. *BNAPS Exhibit Series*, No. 75.

Figure 1
3¢ Wilding, Plate 1.

A) State 1: date of proof 27 April 1954, date of issue 10 June 1954; paper texture horizontally ribbed front (initial printings) and horizontally ribbed back (beginning in 1958); original dot is visible.

B, C) State 2 (B, untagged; C, tagged): paper texture horizontally ribbed back; date of introduction between 1958, when printings with a horizontally ribbed back appeared, and 13 January 1962, when tagged stamps were issued; untagged inscription blocks show only the new dot (original dot was trimmed off), whereas tagged inscription blocks show both the original dot and new dot.

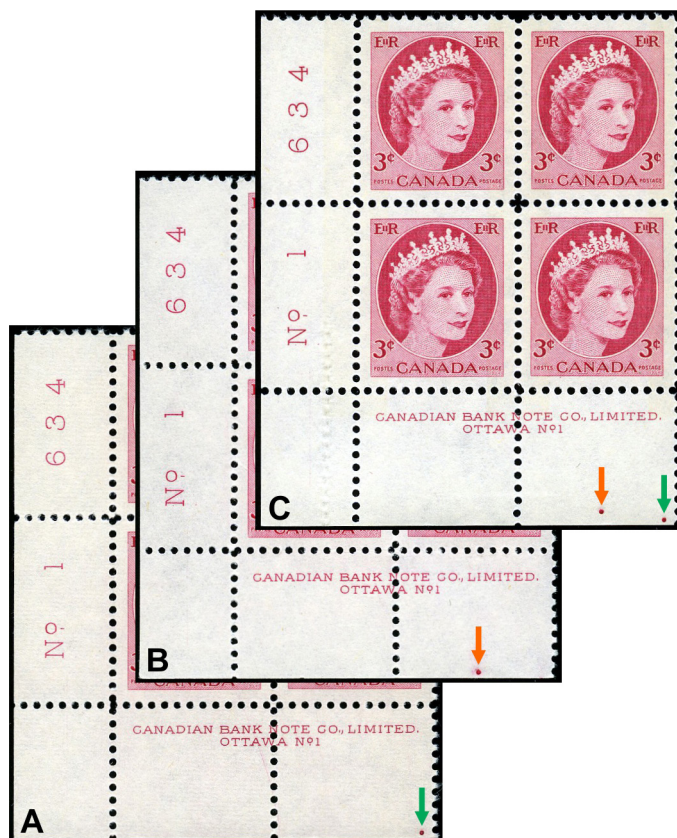


Figure 2
3¢ Wilding, Plate 2.

A) State 1: date of proof 27 April 1954, date of issue 10 June 1954; paper texture horizontally ribbed front (initial printings) and horizontally ribbed back (beginning in 1958); original dot is visible.

B, C) State 2 (B, untagged; C, tagged): paper texture horizontally ribbed back; date of introduction between 1958, when printings with a horizontally ribbed back appeared, and 13 January 1962, when tagged stamps were issued; untagged inscription blocks show only the new dot (original dot was trimmed off), whereas tagged inscription blocks show both the original dot and new dot.

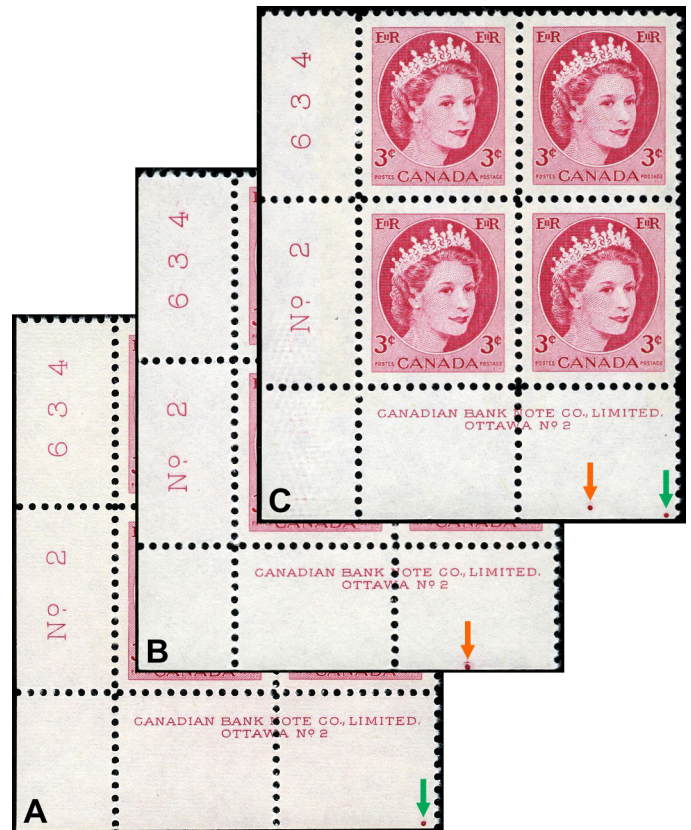


Figure 3
4¢ Wilding, Plate 10.

A) State 1: date of proof 30 November 1956, date of issue probably December 1956 or early 1957; paper texture horizontally ribbed back; original dot is visible.

B) State 2: paper texture horizontally ribbed back; date of introduction probably before Fall 1957, when Plate 11 was probably issued, but no later than 1958, when vertically ribbed stamps of Plate 15 appeared; both the original dot and new dot are visible.

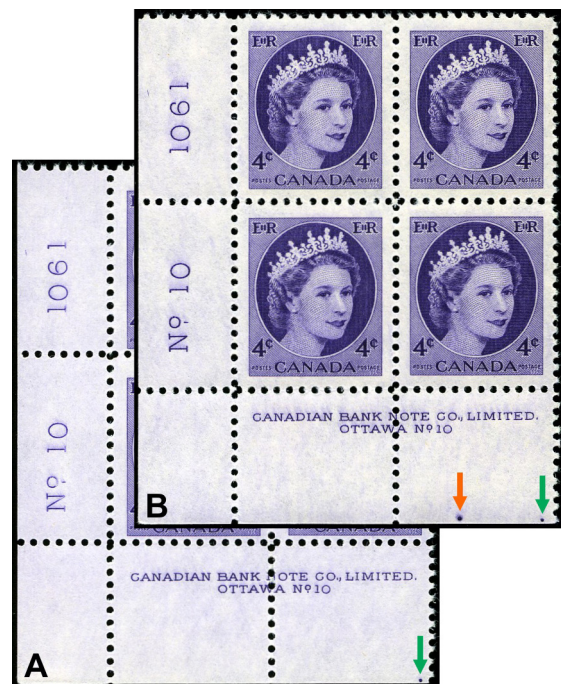




Figure 4

7¢ Canada Goose, Plate 1.

A) State 1: date of proof 15 September 1952, date of issue 3 November 1952; paper texture horizontally ribbed front; original dot is visible.

B) State 2: paper texture horizontally ribbed front (initial printings) and horizontally ribbed back (beginning in 1956); date of introduction no later than 1956, when printings with a horizontally ribbed back appeared; only the new dot is visible (original dot was trimmed off).



Figure 5

7¢ Canada Goose, Plate 2.

A) State 1: date of proof 26 August 1952, date of issue 3 November 1952; paper texture horizontally ribbed front; original dot is visible.

B) State 2: paper texture horizontally ribbed front (initial printings) and horizontally ribbed back (beginning in 1956); date of introduction no later than 1956, when printings with a horizontally ribbed back appeared; only the new dot is visible (original dot was trimmed off).

Figure 6

10¢ Inuk & Kayak, Plate 2.

A) State 1: date of proof 25 January 1955, date of issue 21 February 1955; paper texture horizontally ribbed front; original dot is visible.

B) State 2: paper texture horizontally ribbed front (initial printings) and horizontally ribbed back (beginning in 1957); date of introduction no later than 1957, when printings with a horizontally ribbed back appeared; only the new dot is visible (original dot was trimmed off).



Figure 7

10¢ Inuk & Kayak, Plate 3.

A) State 1: date of proof 4 June 1957, date of issue probably Summer 1957; paper texture horizontally ribbed back; original dot is visible.

B) State 2: paper texture horizontally ribbed back (initial printings) and horizontally ribbed front (1961); date of introduction no later than 1961, when printings with a horizontally ribbed front reappeared; only the new dot is visible (original dot was trimmed off).





Figure 8

10¢ Inuk & Kayak, Plate 4.

A) State 1: date of proof 4 June 1957, date of issue probably Summer 1957; paper texture horizontally ribbed back; original dot is visible.

B) State 2: paper texture horizontally ribbed back (initial printings) and horizontally ribbed front (1961); date of introduction no later than 1961, when printings with a horizontally ribbed front reappeared; only the new dot is visible (original dot was trimmed off).

Figure 9

20¢ Forestry Products, Plate 1.

A) State 1: date of proof 18 February 1952, date of issue 1 April 1952; paper texture horizontally ribbed front; original dot is visible.

B) State 2: paper texture horizontally ribbed front (initial printings) and horizontally ribbed back (beginning in 1955); date of introduction no later than 1955, when printings with a horizontally ribbed back appeared; both the original dot and new dot are visible.

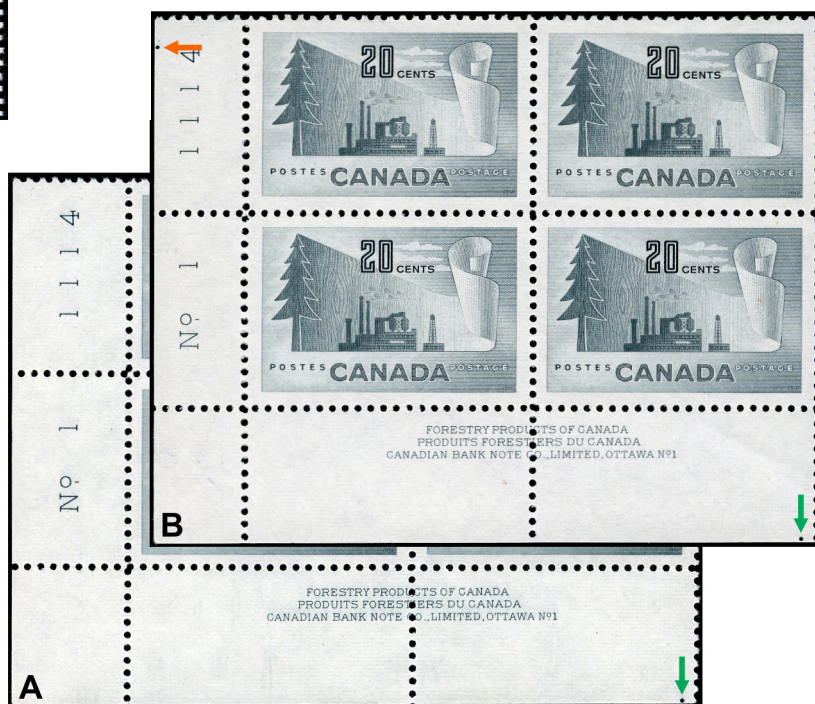


Figure 10

20¢ Forestry Products, Plate 2.

A) State 1: date of proof 18 February 1952, date of issue 1 April 1952; paper texture horizontally ribbed front; original dot is visible.

B) State 2: paper texture horizontally ribbed front; date of introduction probably the same as State 2 of Plate 1 (i.e., no later than 1955); both the original dot and new dot are visible.



Figure 11

20¢ Pulp & Paper Industry, Plate 1.

A) State 1: date of proof 9 April 1956, date of issue 7 June 1956; paper texture horizontally ribbed front; original dot was trimmed off (on the plate proof it is located 19 mm below the lower-right corner of the lower-right stamp image; i.e., comparable to Figure 9A).

B) State 2: paper texture horizontally ribbed front (initial printings) and horizontally ribbed back (beginning in 1958); date of introduction no later than 1958, when printings with a horizontally ribbed back appeared; only the new dot is visible (original dot was trimmed off).



Figure 12

20¢ Pulp & Paper Industry, Plate 2.

A) State 1: date of proof 9 April 1956, date of issue 7 June 1956; paper texture horizontally ribbed front; original dot was trimmed off (on the plate proof it is located 19 mm below the lower-right corner of the lower-right stamp image; i.e., comparable to Figure 10A).

B) State 2: paper texture horizontally ribbed front (initial printings) and horizontally ribbed back (beginning in 1958); date of introduction no later than 1958, when printings with a horizontally ribbed back appeared; only the new dot is visible (original dot was trimmed off).

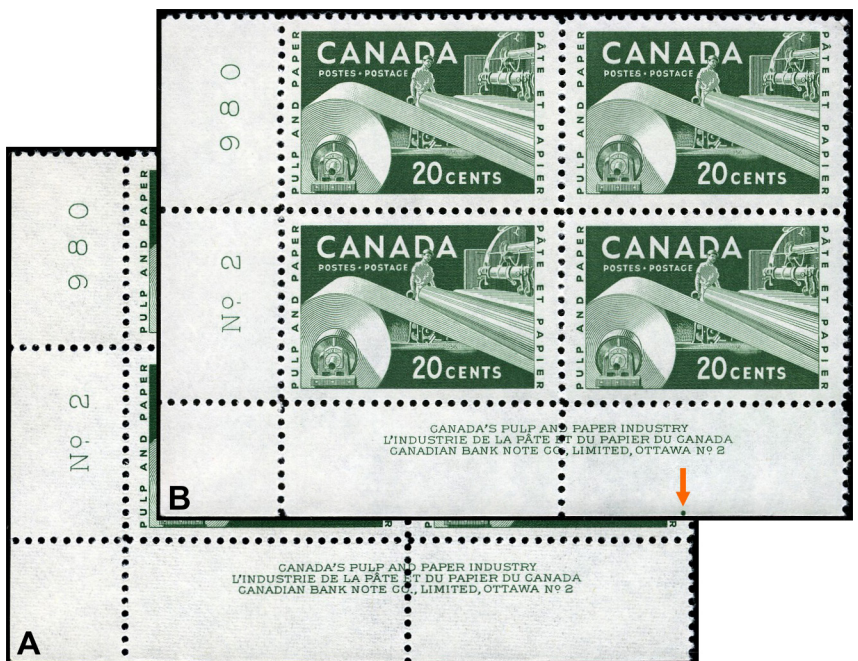




Figure 13

50¢ Textile Industry, Plate 1.

A) State 1: date of proof 4 September 1953, date of issue 2 November 1953; paper texture horizontally ribbed front; original dot was trimmed off (on the plate proof it is located 19 mm below the lower-right corner of the lower-right stamp image; i.e., comparable to Figure 9A).

B) State 2: paper texture horizontally ribbed back; date of introduction 1957, when stamps with a horizontally ribbed back appeared; only the two new dots are visible (original dot was trimmed off). Note: State 2 of Plate 1 resembles State 3 of Plate 2 in showing two dots (see Figure 14C); examples of Plate 1 that resemble State 2 of Plate 2 (see Figure 14B) have not been found (i.e., all examples of Plate 1 that show a dot in the lower selvedge also show a dot in the left selvedge, provided that the selvages are sufficiently wide to verify the presence of the dots).

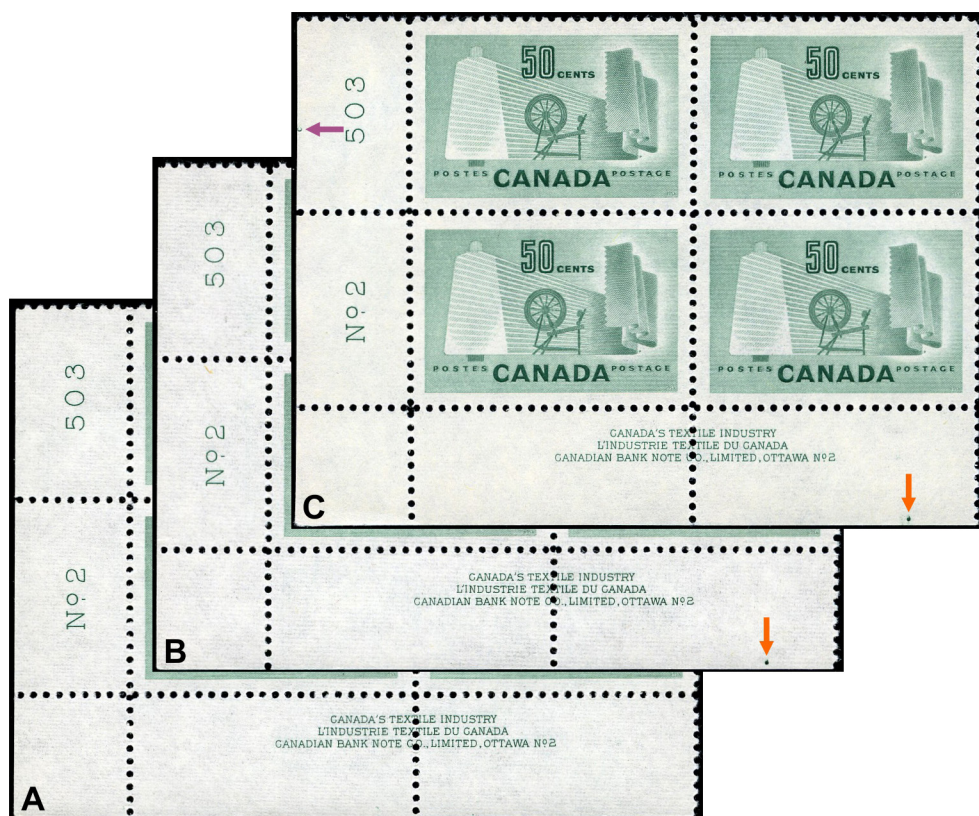


Figure 14

50¢ Textile Industry, Plate 2.

A) State 1: date of proof 4 September 1953, date of issue 2 November 1953; paper texture horizontally ribbed front; original dot was trimmed off (on the plate proof it is located 19 mm below the lower-right corner of the lower-right stamp image; i.e., comparable to Figure 10A).

B) State 2: paper texture horizontally ribbed front; date of introduction no later than 1957, when stamps with a horizontally ribbed back appeared; only the new dot is visible (original dot was trimmed off). C) State 3: paper texture horizontally ribbed back; date of introduction 1957, when stamps with a horizontally ribbed back appeared; only the State 2 dot and new dot are visible (original dot was trimmed off).

Figure 15

\$1 Totem Pole, Plate 1.

A) State 1: date of proof 31 October 1952, date of issue 2 February 1953; paper texture horizontally ribbed front; there is no dot (dots are not present in the lower or left margins of the plate proof).

B) State 2: paper texture horizontally ribbed back; date of introduction 1958, when stamps with a horizontally ribbed back appeared; a dot is visible.

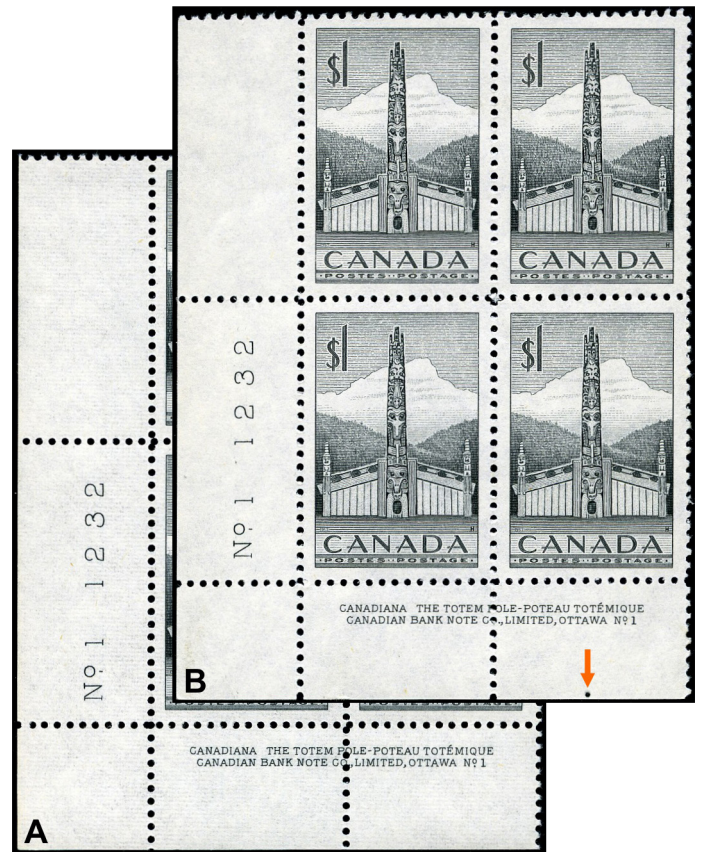
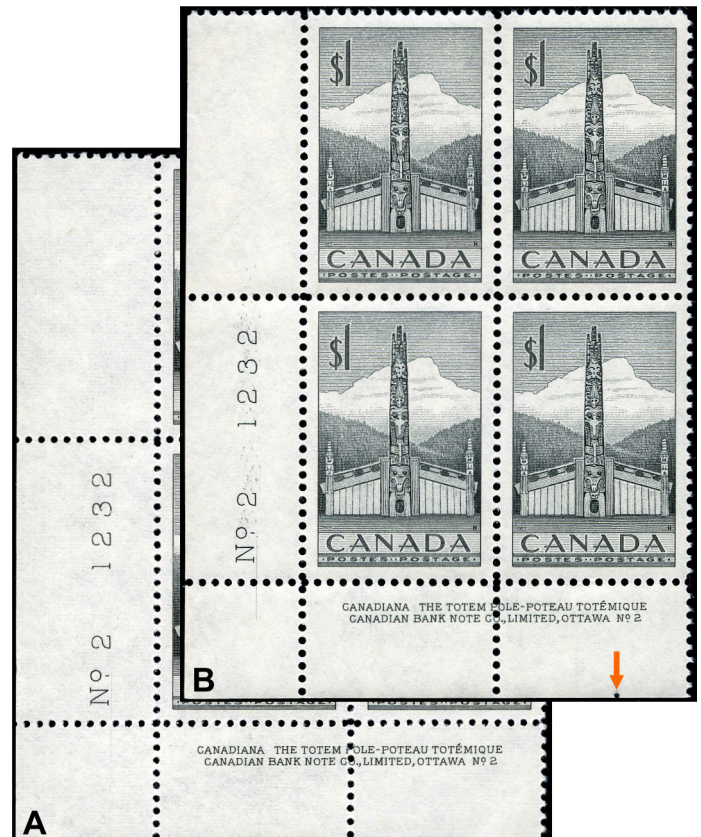


Figure 16

\$1 Totem Pole, Plate 2.

A) State 1: date of proof 6 November 1952, date of issue 2 February 1953; paper texture horizontally ribbed front; there is no dot (dots are not present in the lower or left margins of the plate proof).

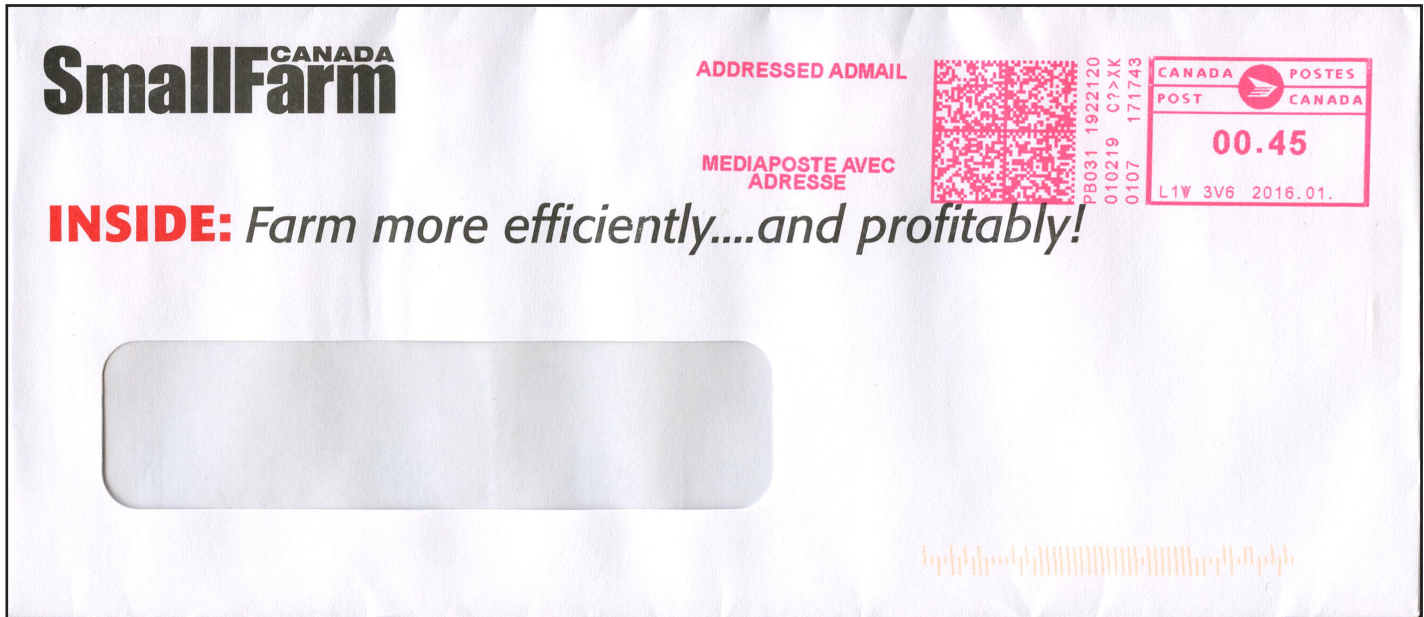
B) State 2: paper texture horizontally ribbed back; date of introduction 1958, when stamps with a horizontally ribbed back appeared; a dot is visible.



Metered Addressed Admail™

I can't recall receiving a metered addressed admail cover before. The one illustrated, showing a 45 cents rate, has a '2016.01' imprint date (the *day* is missing).

A quick check of the Canada Post on-line postal guide for Personalized Mail™ (Addressed Admail™) shows that the rate, as of January 11, 2016, is 46 cents. Unfortunately I don't have a copy of the pricing prior to the rate increase ... based on this cover the metered Addressed Admail™ rate must have increased 1 cent on January 11, 2016.



Personalized Mail™ (Addressed Admail™) - Pricing

PRICING

The "Pricing" module provides detailed information on pricing for service options such as standard, oversize, machineable and special handling. This module also includes pricing information related to address accuracy, phantom pricing, item and order level surcharges and adjustments.

1 PRICES

In order to take advantage of Personalized mail prices, the customer must meet all applicable requirements, including specifications, Address Accuracy and mail preparation requirements for Personalized Mail, as outlined in this Agreement.

Category	Price per Item					
Machineable	Standard¹ Up to 50 g			Oversize Up to 500 g		
	\$0.46			\$0.69 + \$0.0034 per g over 50 g		
Special Handling	Standard	Over 50 g up to 100 g	Oversize Up to 500 g	Over 500 g up to 1.36 kg	Dimensional Up to 500 g	Over 500 g up to 1.36 kg
	Up to 50 g					
	\$0.51	\$0.56	\$0.64 + \$0.0034 per g over 50 g	\$2.58 + \$0.0040 per g over 500 g	\$1.48 + \$0.0034 per g over 50 g	\$2.97 + \$0.0040 per g over 500 g

Option	Price per Item
Return to Sender ²	\$0.01

¹ Machineable Standard price also applies to Machineable Mini-catalogue.

² Return to Sender fee per item applies upfront to the entire volume declared in the Order (Statement of Mailing).

Qualifying Customers may have access to lower prices by signing an Agreement. For further details contact the Commercial Service Network. All prices are subject to applicable rebates, discounts, fees, surcharges, adjustments and taxes.

For further information on Personalized Mail, visit canadapost.ca/cppmguides.

New Meter/Postal Indicia Postal Rates (2016)

As discussed on the first page of this *Corgi Times*, postal rates for those using **stamps** are staying the same *for now*. However, rates for businesses/individuals using meter/postage indicia have increased, effective January 11, 2016:

Meter Domestic Lettermail™ rates							
	0-30g	to 50g	to 100g	to 200g	to 300g	to 400g	to 500g
Mar 31/14	0.75	1.15	1.60	2.60	3.65	4.15	4.45
Jan 12/15	0.77	1.18	1.65	2.68	3.76	4.27	4.58
Jan 11/16	0.80	1.19	1.71	2.77	3.89	4.42	4.74

Meter USA Letter-post rates					
	0-30g	to 50g	to 100g	to 200g	to 500g
Mar 31/14	1.15	1.60	2.50	4.52	9.05
Jan 12/15	1.18	1.65	2.58	4.66	9.32
Jan 11/16	1.19	1.72	2.68	4.85	9.69

Meter Int'l Letter-post rates					
	0-30g	to 50g	to 100g	to 200g	to 500g
Mar 31/14	2.20	3.19	5.19	9.05	18.10
Jan 12/15	2.27	3.29	5.35	9.32	18.64
Jan 11/16	2.36	3.42	5.56	9.69	19.39



Domestic Lettermail™ meter rate, 0-30g (\$0.80)

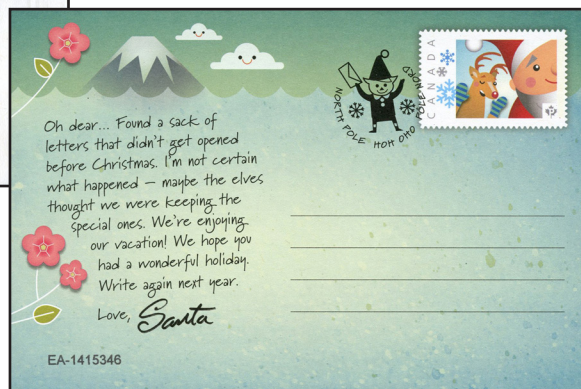
Articles Urgently Needed

2015 Santa Claus Letter "Stamps"

Starting in 2008, Canada Post's Santa Claus letters were mailed with envelopes that had precancelled postage stamp imprints showing a previous year's postage stamp design. In 2013, a Picture Postage™ design was used showing Mrs. Claus. In 2014, the Picture Postage™ design showed Mrs. Claus skiing. In 2015, another Picture Postage™ design was used, this time showing a reindeer with mitts and a portion of Santa Claus.

For each year Santa used multiple letters: English, French, individual, group-sent, and mail received from children after Christmas. The envelopes (and more recently, the addition of a postcard) were slightly different for each type of mailing (different back markings/serial numbers).

The size 10 envelopes come with three different versions of letters, helpful when Santa answers the letters of multiple children in the same family. Each version has a different serial number prefix (EB1/EB2/EB3 for english letters, and FB1/FB2/FB3 for french letters).



Elizabethan II Market Place

Classified listings in the Market Place are \$1.00 for 25 words. Additional words are 5¢ each. Camera ready display ads (preferably 300dpi, black and white tiff scans) pertaining primarily to the Elizabethan era will be accepted at the following rates: 1/8 page \$5.00; 1/4 page \$8.00; 1/2 page \$15.00 and a full page at \$30.00. 25% discount for four consecutive insertions of the same ad. Full payment must accompany ad. Payment in Canadian funds to: Elizabethan II Study Group. Mail to Editor: Robin Harris, PO Box 2243, Beausejour, MB R0E 0C0, Canada.