



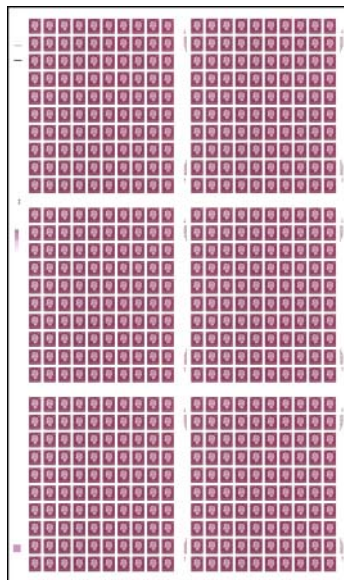
In This Issue

ESG Members 47
 Coils of 3,000 and 5,000. 47
 \$8 Grizzly Bear 47
 Contributions 47
 Canada Post News 48
 Study Group Business 49
 Corgi Times Mailing 49
 Postal Rates Books. 49
 2007 Stamp Program 50
 2008 Stamp Program 50
 OFDC Errata. 51
 Definitive “Details” 51
 Stationery Reprinted 52
 400 Years of French Settlement. . 53
 Variations on the first day slogan 54
 Market Place 55
 Beneficial Insects 56
 Spicer paper 56
 Alberta Centennial 57
 Alouette II Guide Dots 56
 Letters from Home 62

Feature Article

Library and Archives Visit 58

Copies mailed: 131



36¢ QEII Press Sheet (cylinder)
See page 58

ESG Members

We need to recognize a couple of our members...

ESG member Doug Lingard was awarded a Fellow of the Royal Philatelic Society of Canada at The Royal show held in Toronto this past October. Congratulations Doug.

ESG member Andrew Chung has been appointed as chair of the Admiral Study Group. [ESG member Leopold Beaudet is the editor of what I believe to be the best BNAPS Study Group newsletter, *The Admiral Log*.] By the way, Andrew has donated his Rate book royalties back to the ESG. Many thanks Andrew.

Coils of 3,000 and 5,000

In what is now a first for Canada Post, the new Permanent™ design stamp has been released in coils of 3,000 and 5,000 for business clients.



The stamps are arranged horizontally around the roll (as opposed to vertically on the rolls of 100 containing the same design).

The simulated die cut perforations at the top and bottom are identical (i.e. consistent) on all stamps from the new rolls, unlike those found on the rolls of 100.

The “perf” of the new stamp is 9.3, compared to a range of 8.4–9.0 on the stamps from rolls of 100.

\$8 Grizzly Bear

The latest Canada Post *Collections of Canada* magazine (Spring 2008), that arrived just as we were in the middle of putting this issue of the *Corgi Times* together, illustrates a possible new version of the \$8 Grizzly Bear stamp (Sc. 1702), first issued over ten years ago (Oct. 15, 1997).



The illustration in *Collections* shows the pane with an inscription, including the “traffic lights” on the right side of the pane. Inscribed panes have not been available for a number of years.

It is not yet known if the single stamp from this reprint is different in any way from the original printing in 1997. We will update you in the next *Corgi Times*.

Contributions

Special thanks to ESG member John Arn for passing along some of his excess Canadian postage (a total of \$667.40) at 85% of face value, plus a 5% donation to our study group.

As can be seen on page 49, our postage costs continue to increase every year – an average increase of about 5% for each of the past several years. Contributions like this have helped us keep the membership rates (at least for Canadian and USA members) at the same rate for many years.

Who are We?

We are the Elizabethan II Study Group under the auspices of the British North America Philatelic Society (BNAPS) — The Society for Canadian Philately.

Our journal, the *Corgi Times* is published 6 times a year.

With the exception of the 1967–73 Centennial Definitives, we study all aspects of Canadian philately during the Elizabethan era.

BNAPS

Website: www.bnaps.org

Membership information:

Peter Jacobi, Secretary
#6 - 2168 -150 A St.
Surrey, BC V4A 9W4
Canada
E-mail: pjacobi@shaw.ca

Elizabethan II Study Group

Chairman

Harry C. Machum
Box 123
Little Current, ON P0P 1K0
Canada

Treasurer

Ronald Rush
30 Forest Hill Cres
Fonthill, ON L0S 1E1
Canada

Corgi Times Index Robert McGuinness

Market Report vacant

Paper Trails Rick Penko

Auction joint with Centennial group

Website:

www.adminware.ca/esg

Annual Dues

US and Canadian addresses is US\$15.00.
Canadian addresses option of C\$15.00.
All others US\$19.00.

Please make cheques payable to “The Elizabethan II Study Group” and send to Robin Harris, Editor at the address listed to the right.

Articles with no by-line are written or compiled by the Editor. All articles are ©2007 by the author and/or the Elizabethan Study Group.

Canada Post News

Do we like more stamps being issued by Canada? Sure we do! Every new issue is a part of the Elizabethan era — right up our alley. Here is what Canada Post is up to these days...

Flipped Flag

One of the most recent Flag over Lighthouses stamps has a reversed (or flipped) image. Some 800,000 stamps carrying the flipped image were printed.

In early January Canada Post announced that it will correct the image. The design pictures the Pachena Point lighthouse from the West Coast Trail. The original stamp was released December 27, 2007 with four other lighthouse designs in self-adhesive booklet panes of 10 stamps (two ‘error’ stamps per pane of 10).



According to the latest *Collections of Canada*, a booklet of 30 is scheduled for release on May 1, 2008. It is presumed that this will contain a corrected image.

The new, corrected stamp, will likely have the lightkeeper’s house, currently shown in the bottom left, cropped out and instead feature more of a walkway and the ocean that are left of the lighthouse.

According to an article from a CanWest Interactive website, First Light Associated Photographers Inc., which sold the image to Canada Post, said the image was flipped by a company hired to scan the image before it was put on its website for sale. It has since been corrected.

Errata

On page 34 of the last issue of *Corgi Times* (Nov-Dec 2007), it was noted that the Captain George Vancouver stamp came from a *pane of 16*; as illustrated at right, this is obviously incorrect. It should have read “a pane of 8”.



Corgi Times

Editor:

Robin Harris
PO Box 104
Seddons Corner, MB R0E 1X0
Canada
E-mail: corgi@adminware.ca
Phone: (204) 268-9395

Back Issues:

Sample or single issues C\$3.50, US\$3.50 each.

(Six issues per volume) Vol I through V C\$17/vol, US\$17.00/vol; Vol VI C\$21, US\$21; Vol VII C\$18.50, US\$18.50; Vol VIII to XIII C\$20/vol, US\$20/vol

Corgi Times is produced with Adobe InDesign CS® for Windows. Manuscripts should be submitted to the Editor at the address above. Electronic format is preferred but not required. Scanned illustrations (300dpi, colour, actual size, JPEG or TIFF, black background), if available, should be sent as separate files from text files. Lower quality images will *not* be printed and will likely result in the article not being printed.

Study Group Business

New members

E-mail changes/additions

Planning Calendar

This is a listing of major exhibitions and bourses with a large content of both Canadian Exhibits and Canadian dealers. Minimum listing criteria: two day event; 1000 page exhibition; 18 dealer bourse with 50% offering Canadian material.

The goal is to list events far in advance to encourage either exhibiting or attendance and preferably both.

2008

May 16–18 — ROYAL 2008: Quebec City, QC

Aug 29–31 — BNAPEX 2008: Halifax, NS

Corgi Times Mailing

Postal rates in Canada increased January 14, 2008. Time for our nearly-annual look at how this affects the mailing costs for the *Corgi Times*. A typical issue of the *Corgi Times* weighs just a smidgen under 50g. A couple of issues per year require another sheet or two of paper which pushes the weight over the 50g into the 100g rate. The \$/year is based on 4 issues mailed at the 50g rate and 2 issues at the 100g rate. In five years we have seen an overall increase of 25% in total postage rates for a year.

Based on this, the chart below compares our approximate postage rates for the last several years (not including GST). The 'Qty' is about the number of copies of the *Corgi Times* that we mail out for a *current* issue (it fluctuates slightly but this will give a relative comparison from year to year). The calculated prices, for comparison purposes only, assume that the Qty (99/25/7) was the same for every issue.

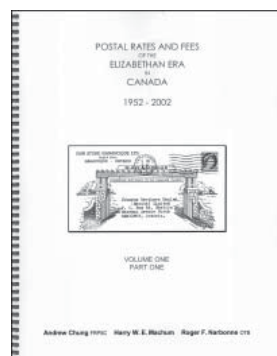
		2003		2004		2005		2006		2007		2008	
		48¢ era		49¢ era		50¢ era		51¢ era		52¢ era		52¢ era	
	Qty	50g	100g	50g	100g	50g	100g	50g	100g	50g	100g	50g	100g
Canada	99	77¢	96¢	80¢	98¢	85¢	\$1.00	89¢	\$1.05	93¢	\$1.10	96¢	\$1.15
USA	25	90¢	\$1.40	98¢	\$1.60	\$1.00	\$1.70	\$1.05	\$1.78	\$1.10	\$1.86	\$1.15	\$1.92
Int'l	7	\$1.75	\$3.00	\$1.96	\$3.20	\$2.00	\$3.40	\$2.10	\$3.49	\$2.20	\$3.60	\$2.30	\$3.75
\$/issue		\$110.98	\$151.04	\$117.42	\$159.42	\$123.15	\$165.30	\$129.06	\$172.88	\$134.97	\$180.60	\$139.89	\$188.10
\$/year		\$746.00		\$788.52		\$823.20		\$862.00		\$901.08		\$935.76	

Postal Rates Books

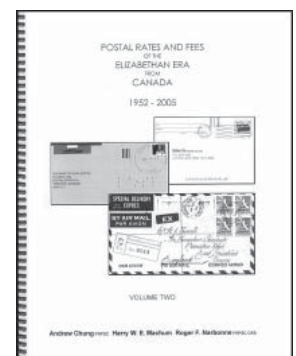
As an Elizabethan II Study Group member you can pick up these valuable reference books at a much reduced price below retail. The chart notes the various pricing for both Volume I and Volume II. Send your order to: Robin Harris, PO Box 104, Seddons Corner, MB R0E 1X0 Canada.

	Volume I Domestic	Volume II USA & Int'l
ESG members	C \$62.95 US \$62.95	C \$34.95 US \$34.95
Non-members	C \$89.95 US \$89.65	C \$49.95 US \$49.95
Postage:		
Canada	C \$10.00	C \$10.00
USA	US \$13.00	US \$13.00
Int'l (surface)	US \$16.50	US \$16.50
	(502 pages)	(275 pages)
	Nov 2004	Apr 2007

Exchange rate subject to change



Postal Rates and Fees of the Elizabethan Era In Canada 1952-2002



Postal Rates and Fees of the Elizabethan Era From Canada 1952-2005

Canada Post 2007 Stamp Program

Issue dates are subject to change by Canada Post. Shaded entries are changed/new from the last time we presented this list.

Issued	Description	Scott#
Jul 6	52¢ Terra Nova National Park	2223
Jul 20	52¢ Jasper National Park Centennial • and gutter block containing Terra Nova National Park and Jasper National Park	2224
Jul 25	52¢ Scouting in Canada Centennial	2225
Jul 26	52¢ Chief Membertou (French settlement series)	2226
Sep 13	52¢ Law Societies of Saskatchewan and Alberta Centennials (2 stamps)	2227–28
Oct 1	52¢ Endangered Species • 4 designs in booklet of 8 • 4 designs in souvenir sheet	2230–33 2229a–d
Oct 12	Low-value definitives: Beneficial Insects (panes of 50) • 1¢ Convergent lady beetle • 3¢ Golden-eyed Lacewing • 5¢ Northern Bumblebee • 10¢ Canada Darner (dragonfly) • 25¢ Cecropia Moth • 44¢ souvenir sheet of 5 • uncut press sheet	2234 2235 2236 2237 2238 2238a
Nov 1	Christmas • Permanent™ (52¢) Reindeer in booklet of 12 • Permanent™ (52¢) Hope in booklet of 12 • 93¢ Joy in booklet of 6 • \$1.55 Peace in booklet of 6	2239 2240 2241 2242
Dec 27	Rate-change definitives • Permanent™ (52¢) Island Red Orchid, coil of 100 • 96¢ Janet Elizabeth “Fire Dancer” Orchid, coil of 50, booklet of 6 • \$1.15 Memoria Evelyn Light Orchid, coil of 50, booklet of 6 • \$1.60 Kaleidoscope “Conni” Orchid, coil of 50, booklet of 6 • \$4.23 souvenir sheet of 4 • Permanent™ (52¢) Queen Elizabeth II, booklet of 10 • Permanent™ (52¢) × 5 Flag over Lighthouse, booklet of 10	

Canada Post 2008 Stamp Program

Issue dates are subject to change by Canada Post. Shaded entries are changed/new from the last time we presented this list.

Issued	Description	Scott#
Jan 8	Year of the Rat • 52¢ single • \$1.60 souvenir sheet • uncut press sheet • two Prepaid postal cards — one for each postage stamp design	
Jan 15	Permanent™ (52¢) Celebration (booklet of 6)	
Feb 1	Permanent™ (52¢) Island Red Orchid, coil of 3,000 and 5,000	
?	\$8 Grizzly Bear reprint	
Mar 3	Peonies • 52¢ pair in self-adhesive booklet of 10 • 52¢ pair in gummed souvenir sheet • two Prepaid postal cards — one for each postage stamp design	
Mar 7	52¢ University of Alberta (booklet of 8)	
Mar 7	52¢ University of British Columbia (booklet of 8) • and gutter block containing Alberta and British Columbia	
Apr 3	2008 IIHF World Championships	
Apr 21	Guide Dogs	

OFDC Errata

On page 33 of the last issue of *Corgi Times* (Nov-Dec 2007), the note about the Beneficial Insect FDC said that this was the first time that an FDC had not had the full amount of "first-class" postage. The correct term was not applied here.

The intent of this news item was that insufficient postage was applied to the FDC.

There have been many occasions where First Day Covers have been released bearing the 3rd class rate of the 1970's (greeting cards) or the Greet More rate of 1986-1995.

Thanks to ESG member Pascal LeBlond for correcting this error. Pascal prepared the chart shown at right that summarizes the "below first-class rate" Official First Day Covers that Canada Post has produced.

OFDC below first-class rate

Scott	Year	Issue	Affixed	Rate	First class
554	1971	Christmas	\$0.06	3rd class	\$0.07
606	1972	Christmas	\$0.06	3rd class	\$0.08
586	1973	Macdonald	6 x \$0.01	3rd class	\$0.08
588	1973	Borden	2 x \$0.03	3rd class	\$0.08
591	1973	Pearson	\$0.06	3rd class	\$0.08
625	1973	Christmas	\$0.06	3rd class	\$0.08
592	1974	St. Laurent	\$0.07	?	\$0.08
650	1974	Christmas	\$0.06	3rd class	\$0.08
674	1975	Christmas	\$0.06	3rd class	\$0.08
675	1975	Christmas	\$0.06	3rd class	\$0.08
697	1976	Christmas	\$0.08	3rd class	\$0.10
705	1977	Bottle Gentian	10 x \$0.01	3rd class	\$0.12
710	1977	Shooting Star	2 x \$0.05	3rd class	\$0.12
711	1977	Lady's Slipper	\$0.10	3rd class	\$0.12
741	1977	Christmas	\$0.10	3rd class	\$0.12
712	1978	Jewelweed	\$0.12	3rd class	\$0.14
773	1978	Christmas	\$0.12	3rd class	\$0.14
787	1979	Canada Violet	\$0.15	3rd class	\$0.17
839	1979	Christmas	\$0.15	Non-standard	\$0.17
870	1980	Christmas	\$0.15	Non-standard	\$0.17
900	1981	Christmas	\$0.15	Non-standard	\$0.17
901	1981	Christmas	\$0.15	Non-standard	\$0.17
902	1981	Christmas	\$0.15	Non-standard	\$0.17
1116	1986	Christmas	\$0.29	Greet more	\$0.34
1151	1987	Christmas	\$0.31	Greet more	\$0.36
1225	1988	Christmas	\$0.32	Greet more	\$0.37
1255	1989	Christmas	\$0.33	Greet more	\$0.38
1297	1990	Christmas	\$0.34	Greet more	\$0.39
1342	1991	Christmas	\$0.35	Greet more	\$0.40
1455	1992	Christmas	\$0.37	Greet more	\$0.42
1502	1993	Christmas	\$0.38	Greet more	\$0.43
1536	1994	Christmas	\$0.38	Greet more	\$0.43
1588	1995	Christmas	\$0.40	Greet more	\$0.45

Definitive "Details"

Have you looked at the latest definitives with your ultraviolet light and magnifying glass?

Even without a magnifying glass, it is easy to see that the Queen and Flag stamps now look 'more like stamps', with their simulated perfs (thanks Canada Post!); because of this, the full booklets now have selvage around all sides of the pane.



Tagging

Each of the flower stamps have additional tagging elements placed throughout the white areas. The Permanent™ stamp has several "P" logos while the other three values have several Canada Post logos placed strategically throughout the stamps.

On the Queen and Flag over Lighthouse stamps, only the top and right sides have solid tagging. On the left and bottom, the tagging on the Queen stamp is made up of crowns, while on the Flag stamps, the tagging at the left and bottom is made up of 'waves'. Due to how this tagging bleeds across the perfs, it is possible to identify whether the stamp comes from the top or bottom row (and on the Queen, also the left or right column).



Lighthouse Locations

Hidden within each of the Lighthouse designs, in very fine black print, is the geographical location of the illustrated lighthouse. You will need your magnifying for this!

As illustrated to the right, we have provided the location of one of these details. We will let you have the fun of finding the other four. This is very similar to 'hidden dates'.

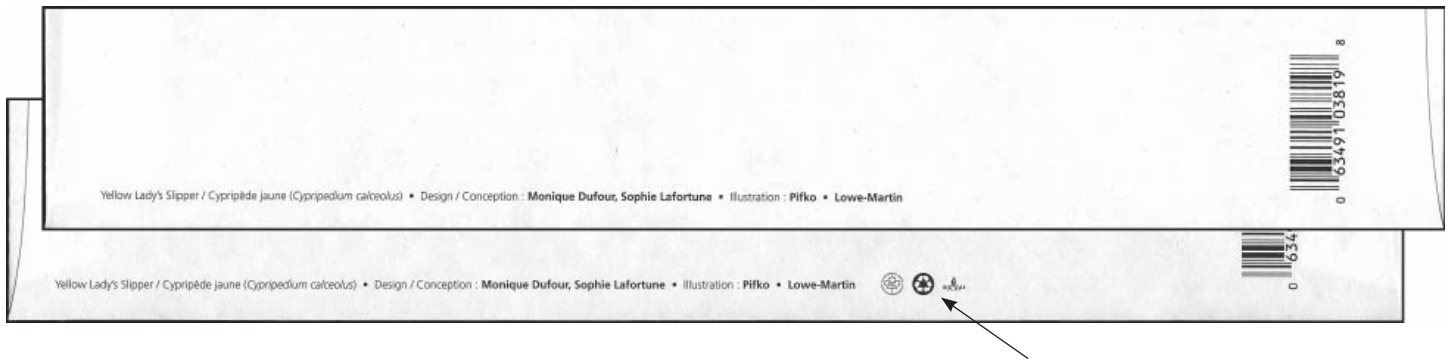
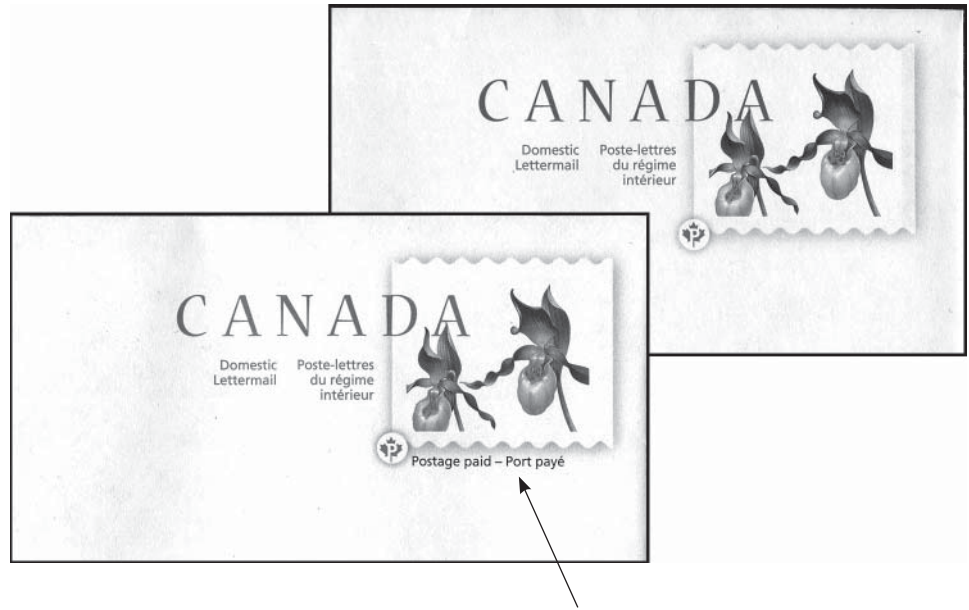


Stationery Reprinted

As we reported in the Sep-Oct 2007 *Corgi Times* (page 20), the two types of stationery that are now available at post offices (Flower and Tourist Attraction designs in both size #8 and 10) are being reprinted on recycled paper – with a recycling logo.

These new envelopes have now started to appear across the country. A quick way to identify these reprints on recycled paper is by a new inscription included as part of the indicia. The words “Postage paid – Port payé” are found just below the image.

New logos appear on the back of the envelopes.



Listed to the right are the various reprints that have been reported on the Flower and Tourist Attraction envelopes. The dates refer to the date found under the flap.

As the tables show, there have been many reprints. In fact, there are now 56 face different envelopes issued with 116 different types ... and counting ... to collect (or ignore if you are getting too overwhelmed with this).

Flower envelopes 4 designs

Size 8 *	Size 10
2006.12.01	2006.12.01
2007.26.01	2006.01.26
2007.05.18	2007.05.18
2007.13.07 §	2007.13.07 §
	2007.13.11 §

* large indicium
§ recycled paper logo, new indicia

Tourist Attraction envelopes 10 designs

Size 8	Size 10
2006.12.01	2006.12.01
2007.26.01	2006.01.26
2007.05.18	2007.05.18
	2007.13.07 §
2007.15.10 §	

§ recycled paper logo, new indicium

Articles requested

Please ... pass along a short or long article (I'll say it again, ... *please*!). We especially thank Pascal Leblond for passing along a couple of articles found in this issue. His research provides some great background information. Pascal has passed along corrections (always welcome) in the past but I believe this is the first time his articles have had a byline attributed to him.

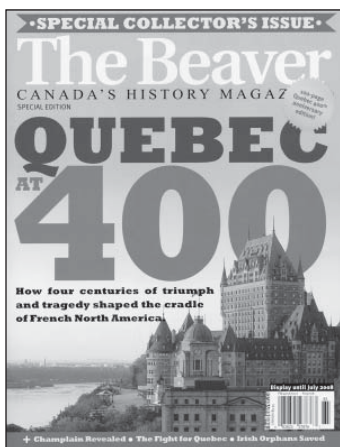
400 Years of French Settlement

While explorers from other nations might have visited the land prior to the French, it was the French who stayed. It was Pierre Dugua de Mons, Samuel de Champlain and others who came motivated first by exploration, then by trade, and finally by the vision of a permanent settlement.

Their Canadian adventures, beginning in 1604, were marked by death from scurvy at St Croix Island, the building of Port-Royal (whose re-creation is today a national park), the mapping of New England during an unsuccessful search for Florida, relationships with Chief Membertou and the Mi'kmaq people, and finally the founding of Kebec in 1608, the precursor of the unique Canadian destination that UNESCO has selected as a World Heritage Site.

This evolution of the French's relationship with the New World is echoed by the five-year 400 Years of French Settlement stamp series. It is evident in the narrative content of the stamps, but also is symbolized in the technical complexity, which increases with each subsequent issue. Striving to depict historically authentic elements in a fresh and modern way, the series begins in 2004 with a simple palette and single-colour intaglio overprint, evolving in production values each year, to culminate in the 2008 Founding of Quebec commemorative, which boasts richly detailed traditional intaglio in three colours, the kind of stamp that makes history in its depiction of our past.

The above narrative is taken from a Canada Post advertisement found in the Feb-Mar 2008 edition of *The Beaver*, Canada's History Magazine (used with permission from both organizations).



French Settlement in Canada

400th anniversary of the first French settlement in Acadia at St. Croix Island



Issued: Jun 26, 2004
Sc. # 2044
Qty: 4,000,000
Joint issue with France

Port-Royal

400th anniversary of the founding of Port-Royal, Nova Scotia



Issued: Jul 16, 2005
Sc. # 2115
Qty: 3,000,000

Champlain Surveys the East Coast

400th anniversary of the mapping of the East Coast by Samuel de Champlain



Issued: May 28, 2006
Sc. # 2155
Qty: 4,000,000
Joint issue with United States

Chief Membertou

In 1607, the French returned to France, leaving the habitation of Port-Royal in the care of Membertou



Issued: Jul 26, 2007
Sc. # 2226
Qty: 3,000,000

Founding of Quebec City

400th anniversary of the founding of Quebec City



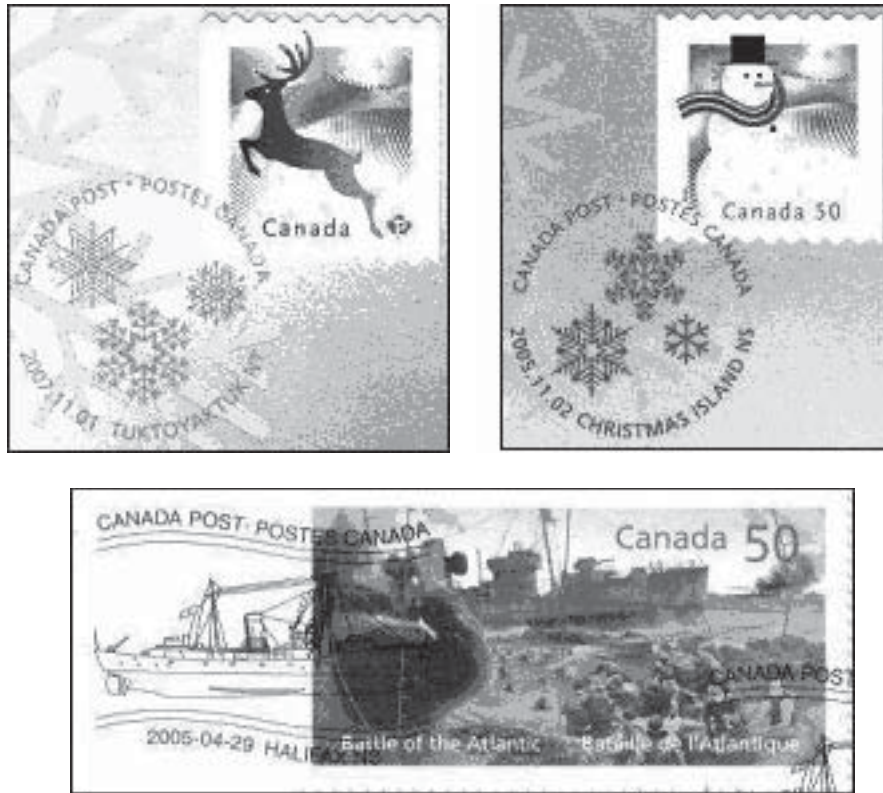
Issued: May 16, 2008
Sc. # ?
Qty:
Joint issue with France

(image is pre-release, courtesy Canada Post)

Variations on the first day slogan

by: Pascal LeBlond

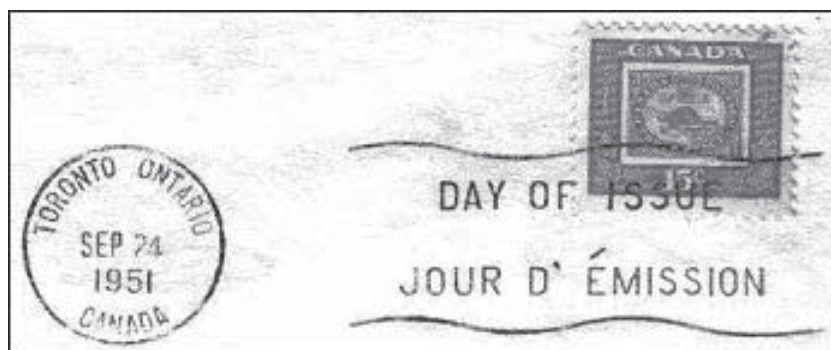
Last November, Canada Post released a reindeer stamp as part of the Christmas issue of 2007. Oddly, the official first day cover doesn't feature the first day slogan. Instead of the usual "Day of Issue / Jour d'émission", the cancellation displays only the name of the crown corporation "Canada Post / Postes Canada". Research shows that this was not the first time. Back in 2005, both the Battle of the Atlantic and the Snowman stamps were treated in the same manner. The reason for this absence is unknown.



During the course of this research, it was also discovered that the text of the first day slogan was changed twice in the last 10 years. In 1998, the Year of the Tiger issue was cancelled with the slogan "Date of Issue" instead of "Day of Issue". In 2001, the Christmas issue was cancelled with the slogan "First Day Issue" instead of "Day of Issue". These two variations affect only the English text and they were never repeated on other issues.



Since the introduction of the first day cancel in Canada almost 60 years ago, the text of the first day slogan has changed only twice. From November 15th, 1949 until September 24th, 1951, the slogan was "First Day of Issue" only in English. On the occasion of the CAPEX issue of 1951, the slogan became bilingual which required that the English version be shortened to save space. The resulting "Day of Issue / Jour d'émission" slogan remains in use up to this day with only the few exceptions mentioned in this article.



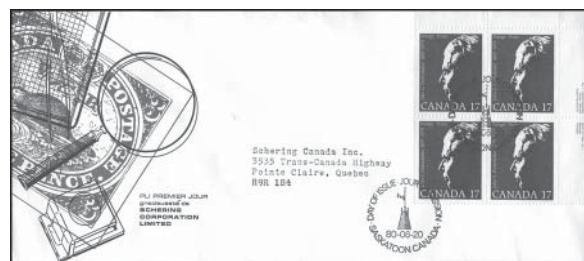
Elizabethan II Market Place

Classified listings in the Market Place are \$1.00 for 25 words. Additional words are 5¢ each. Camera ready display ads (preferably 300dpi, black and white tiff scans) pertaining primarily to the Elizabethan era will be accepted at the following rates: 1/8 page \$5.00; 1/4 page \$8.00; 1/2 page \$15.00 and a full page at \$30.00. 25% discount for four consecutive insertions of the same ad.

Full payment must accompany ad. Payment in Canadian funds to: Elizabethan II Study Group. Mail to Editor: Robin Harris, PO Box 104, Seddons Corner, MB R0E 1X0, Canada.

For Sale

Schering Corporation Limited First Day Covers, 1975 to 1982. White no. 10 size envelopes with generic cachet illustrating the 3d Beaver, a magnifying glass, tongs, etc., with either English or French text. Each with inscription blocks of 4. Most have enclosures advertising pharmaceutical products and all are unopened addressed back to Schering. Fine condition. English text - \$2 each. French text - \$3 each. Write for details to Andrew Chung, P.O. Box 89111, Westdale RPO, Hamilton, ON L8S 4R5.



Beneficial Insects

In the last *Corgi Times* (page 40) we asked for your opinion on the orientation of the beneficial insect stamps issued October 12, 2007 – should these stamps be oriented vertically or horizontally?



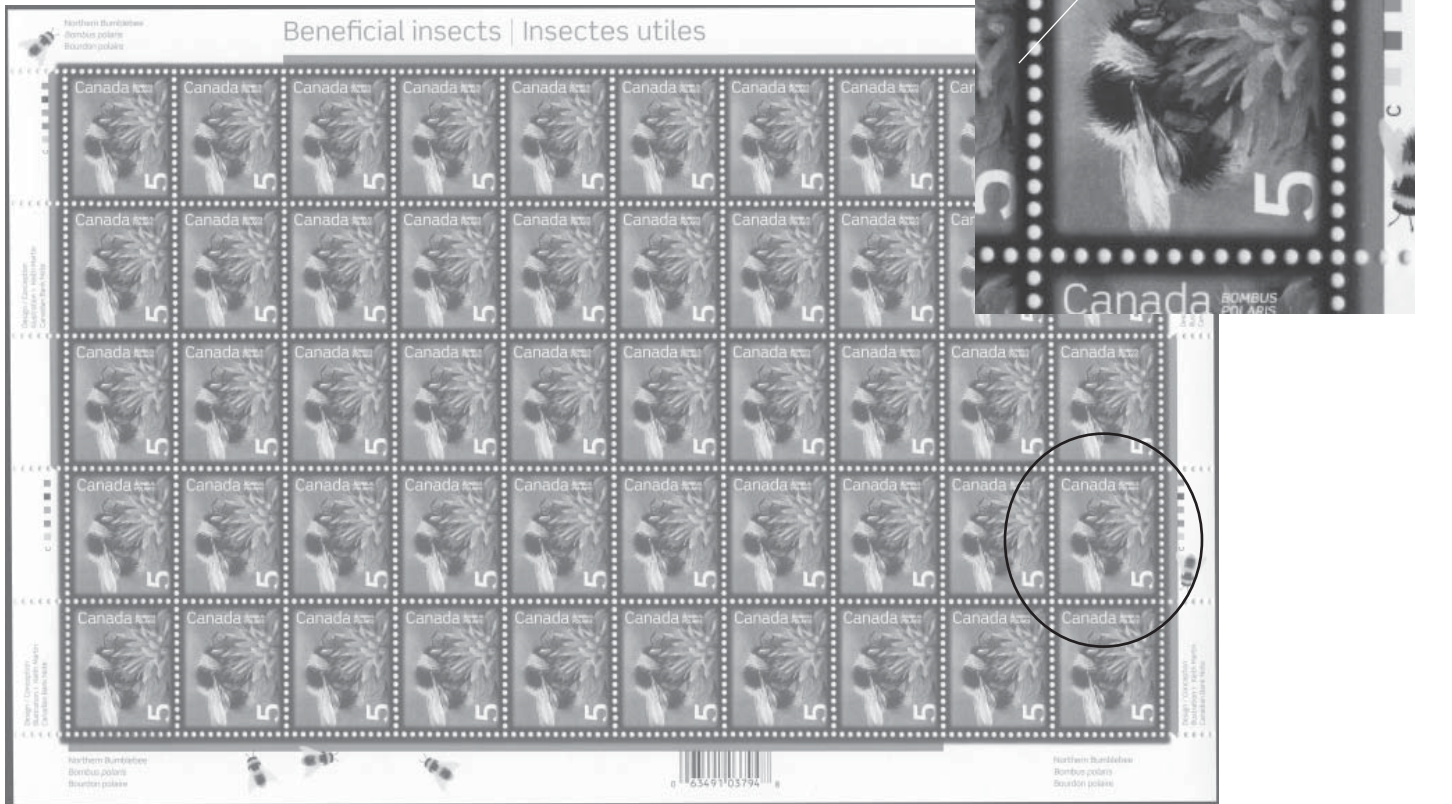
Thanks to all of those ESG members who responded—all *one* of you. Thus, the overwhelming result, at 100% of those who responded, is ... a vertical orientation.

Constant variety

Thanks to ESG member Bill Robertson for passing along the first report of a constant variety on any of the Insect stamps, albeit a very small variety (now this is “flyspecking philately”).

The 5¢ Northern Bumblebee stamp has a ‘spot of pollen’ just under the ‘n’ Canada at position 40 (R4/C10). It consists of a *small* white dot.

Since the pane of the 5¢ value only appears on the press sheet once, every bumblebee pane will have this variety.



Spicer Paper

The new Permanent™ Queen Elizabeth II stamp issued at the end of December 2007 in booklet panes of 10, is printed on a new paper not yet seen on Canadian stamps. The “S” designation, found next to the colour dots in the inscription on the booklet pane, indicates Spicer paper.

Canada has used the letter “S” previously on stamp inscriptions to note Slater paper (in use from February 1988 to January 1992).



Alberta Centennial

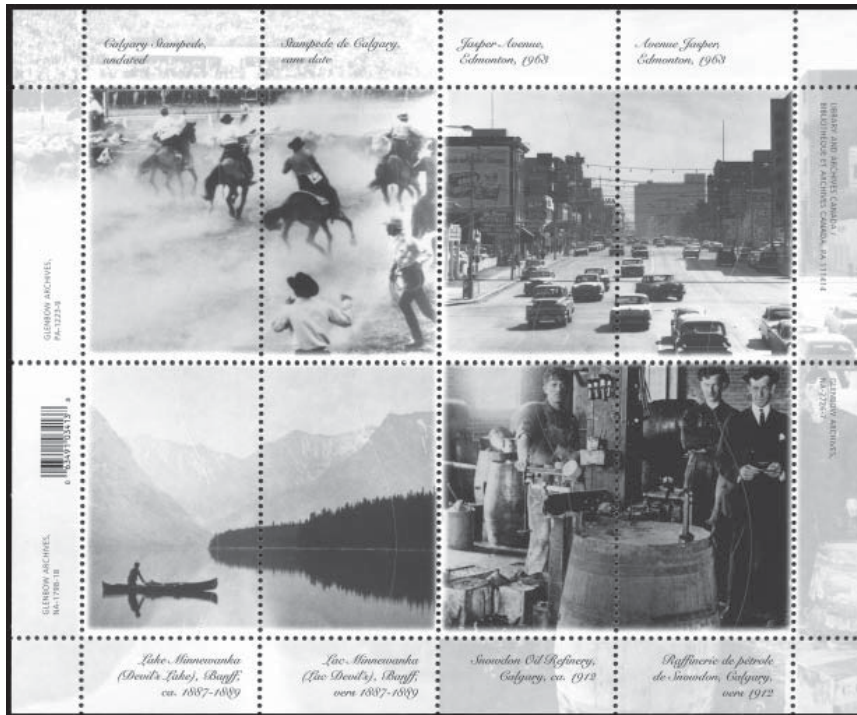
In 2005, a single stamp was issued to celebrate the 100th anniversary of Alberta's entry into Confederation. The self-adhesive was issued in panes of 8 stamps. The stamps were fully perforated – only the third time that had been done on a Canadian stamp.

If a single stamp, with its backing paper intact, is torn from the pane, it then becomes quite difficult to remove the backing paper from the stamp. Because of this difficulty, the backing paper has a wavy die cutting slit passing vertically through the middle (I don't expect this to be apparent in the illustration below).

We have received a report that at least one pane was found with this die cutting on the back of the pane missing.



Scott 2116

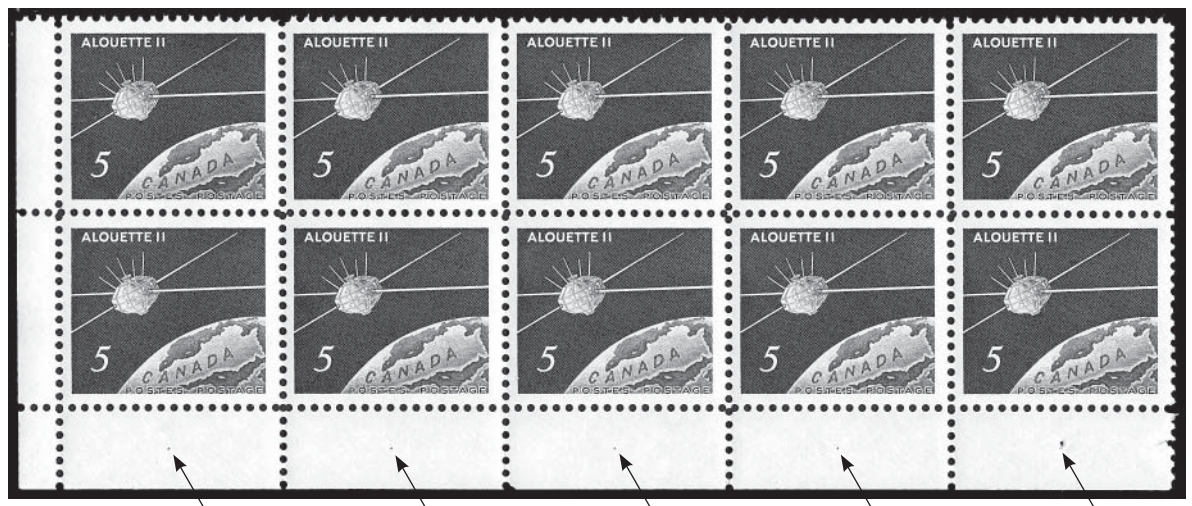


Scott 2116 – backing paper on pane of 8

Alouette II Guide Dots

A former ESG member passed along this block of 10 stamps from the Alouette II issue of January 5, 1966 (Scott 445). In the bottom selvage, centered below each stamp, is a small 'guide dot'. The official reason for this 'feature' is not known.

I have enhanced the dots in the attached illustration, although they are visible with the naked eye (if your eyesight is good, otherwise you will want to use a magnifying glass).



Library and Archives Canada Visit

by: Robin Harris

While on a trip to Ottawa, ON in late January 2008 I took the opportunity to view sheet material of modern Canadian definitives. I owe my gratitude to Pascal Leblond, Project Officer, Philatelic Collections, Library and Archives Canada. I had e-mailed Pascal prior to my visit to ask his help in arranging to see certain material. I'm not sure how much time he spent with this request but I expect it was considerable (he says it is 'his job' to do this).

I am in the process of updating the seven specialized definitive books that I first published over 10 years ago. As part of this project I would like to include as much information on the plate/cylinder layouts as possible. The sole purpose of this particular visit to the Archives was to see as much of this material as possible (thanks again Pascal). I took about 75 pages of notes and drew many illustrations of what I saw, ranging from press sheets of the 1977 Flowers on up to the \$8 Grizzly Bear and \$5 Moose stamps. What a busy, but fascinating couple of days.



36¢ Queen Elizabeth

One of the highlights (among many, many items that I viewed) of this visit was seeing a 'sheet' of the 36¢ Queen Elizabeth II definitive printed by the British American Bank Note Company and issued October 1, 1987. This is illustrated on the next page (as with previous sheet layouts that I have viewed and illustrated in the *Corgi Times*, this one is a digitally created example based on measurements and notes that I took while studying the actual material at the Archives in Ottawa, ON).

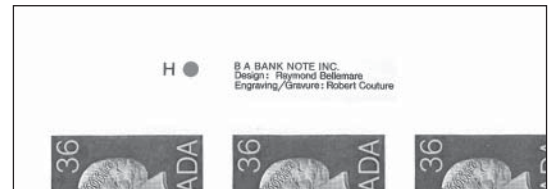
When I was writing the *Centennial Definitive Series 1967–1973* book (436 pages, published in July 2000), Leopold Beaudet wrote and included an extensive *Centennial Stamp Production* article (some 53 pages) which has a section on "BABN Production Techniques". In the article Leopold describes in detail the process and cylinder layout of BABN stamps, which was still used by the 36¢ QE II stamp in 1987.

As Leopold describes, and is clearly seen in the illustration, BABN used cylinders consisting of 600 subjects with six panes of 100 stamps. Three of the panes had inscriptions (for philatelic stock) while the three other panes did not have inscriptions (for field stock). BABN had the option of trimming the inscriptions off during production to produce additional field stock.

Included in the container (folder) that contained this press sheet (container number 2000926235) was another folder that includes two fully completed panes of 100 stamps. These two stamps were printed, tagged, perforated and contained plate inscriptions in all four corners.

Note what the last sentence said, "contained plate inscriptions" just as shown in the accompanying sheet illustration. The Unitrade catalogue has the following footnote for this issue: "Plate blocks were not available for this stamp due to production difficulties." The sheet of 600 subjects included a handwritten inscription "please clean margin" to the right of the pane shown at the upper right in the accompanying illustration.

Also of interest is that the plate inscriptions included the appearance of a 'traffic light' and paper designator. These were introduced on Canadian stamps in June 1986.



30¢ Queen Elizabeth

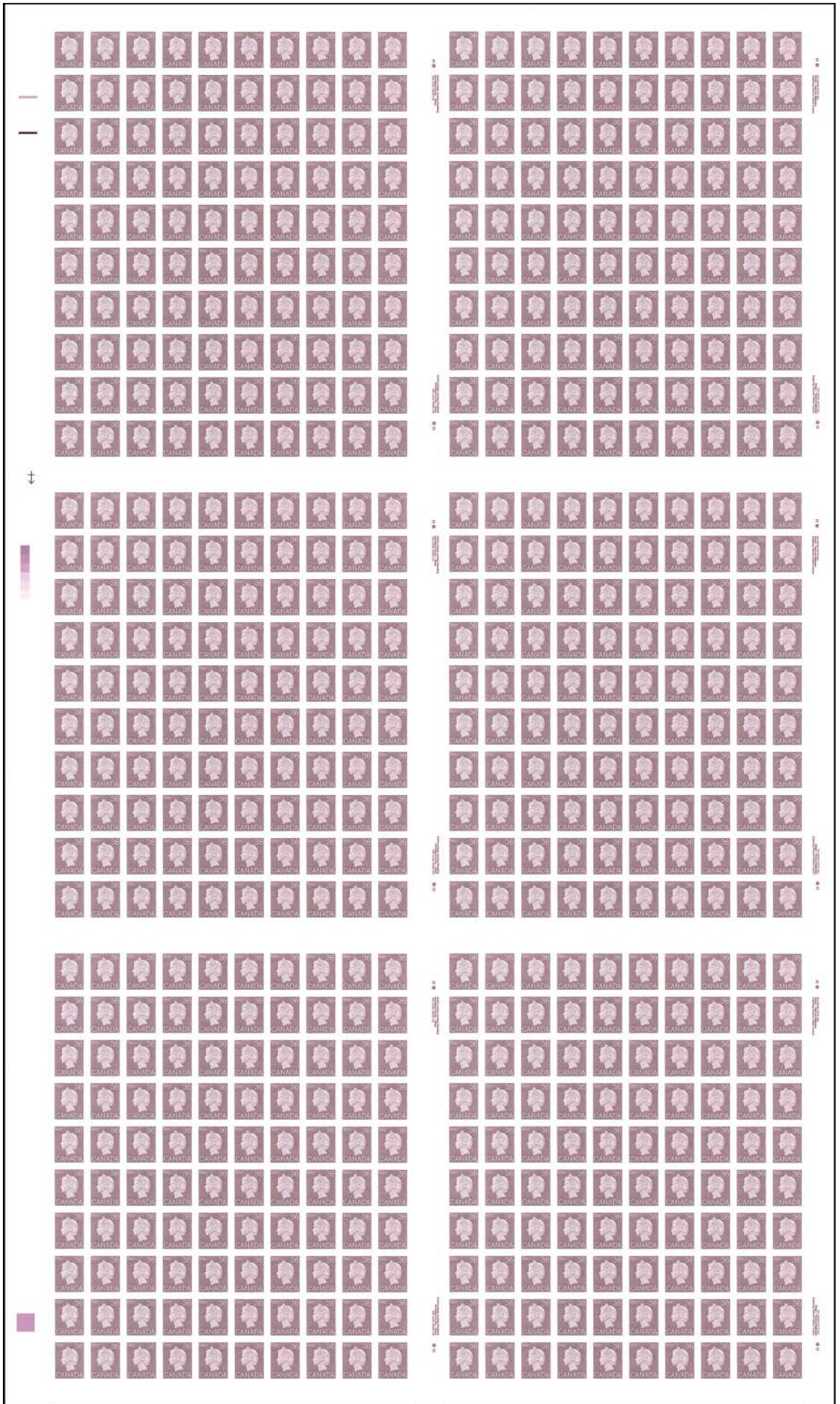
Also illustrated in the following pages are digitally created images of the two plates (cylinders) used to print the 30¢ Queen Elizabeth II stamp (Scott 791). This stamp has always been of interest to me because of the couple of constant plate varieties that have been reported.

Two items of philatelic importance: (1) the constant varieties only exist on one of the six panes (so, a rarity factor of 1 in 600 stamps) and (2) plate 2 of the 30¢ QEII was re-used for the 32¢ QEII stamp (Scott 792), as confirmed by mint and used examples of constant plate varieties (I did not view the 32¢ material at the Archives).

36¢ QE II
BABN, Plate 1

Scott 926A
Oct. 1, 1987

600 subjects per
cylinder (six
panes of 100 with
three containing
inscriptions)



30¢ QE II
BABN, Plate 1

Scott 791
May 11, 1982

600 subjects per cylinder (six panes of 100 with three containing inscriptions)

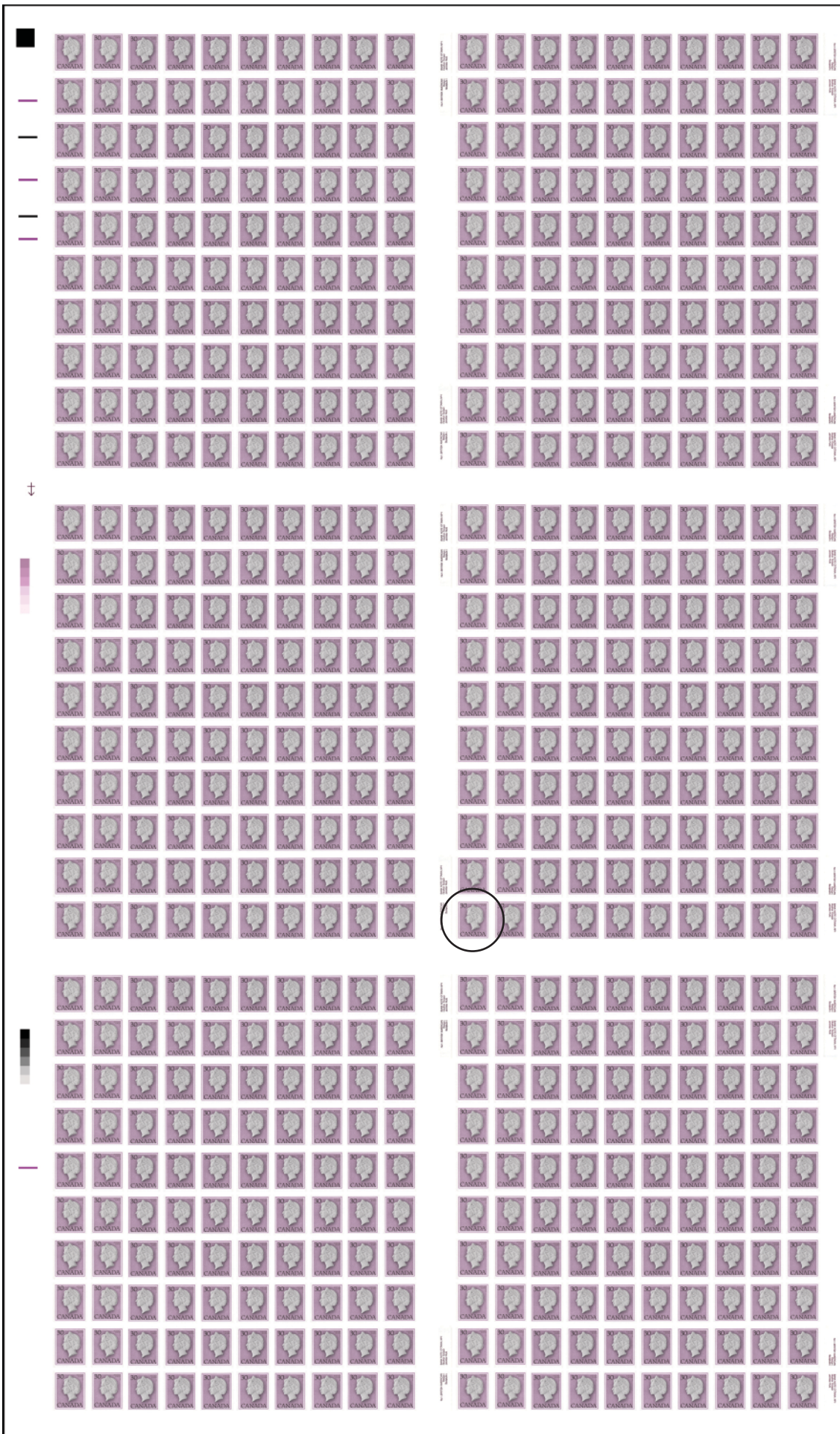
Constant plate varieties, as listed in the *Unitrade Specialized Catalogue of Canadian Stamps*, and illustrated here, are found on only one out of the six panes (thus, 1 in 600 stamps).

Also notice that the 30¢ QEII plate 2 was used for the 32¢ QEII definitive (Scott 792), as verified by the constant plate varieties.



791iii
(pos. 91)
4mm circular purple blemish

The location of the colour bars and lines in the left margin of the sheet are not exactly positioned.

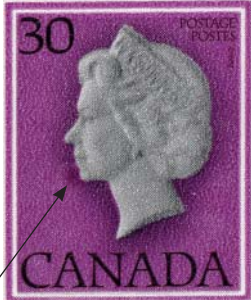


30¢ QE II

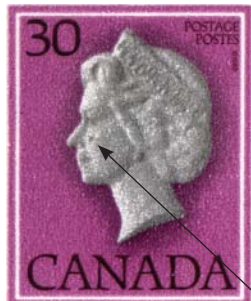
BABN, Plate 2

Scott 791

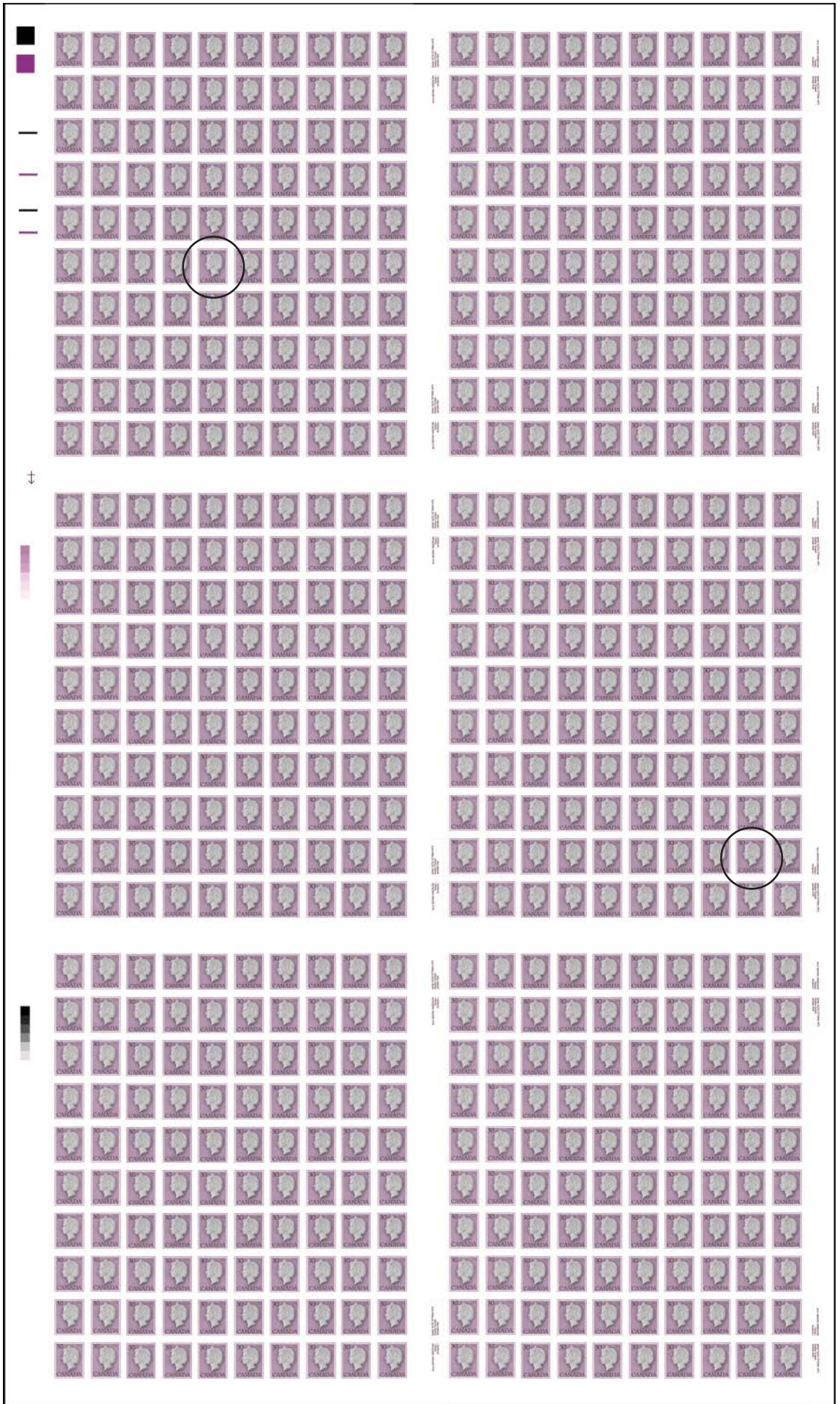
600 subjects per cylinder (six panes of 100 with three containing inscriptions)



791i / 792iii
(pos. 55)
'Queen's goatee'



791ii / 792v
(pos. 89)
'crying Queen'



Letters from Home

by: John Burnett, OTB (#7 of a series)

Late Use of the \$5 Bonsecours Market Definitive Stamp.

Looking through some of my accumulated material sent to me or my kids by my mother I came across these two items and thought you might enjoy seeing them.

The letter shown in figure 1 is a "Security Registered" letter mailed to me on August 12, 1995. The letter contained a check for birthday presents for my kids.

The envelope is franked with a total of \$6 in postage. \$5 is paid with a single Bonsecours Market definitive stamp that was first issued in 1990 and was still the "current" \$5 definitive stamp provided by the Post Office at the time of mailing.

This \$5 stamp actually had nearly a six year life in the market. It goes to show that we collectors must be aware of the proper period of a stamps use. The remainder of the postage was made up of the \$1 Courthouse, Yorkton, SK, definitive stamp issued in 1994.

The cost of security Registration with \$100 indemnity was \$5.60 and the first class letter postage to the United States was 52¢. The registration fee did not include postage and so this letter was actually short paid 12¢.

This letter was mailed from a franchised post office (the local 7-11 store) and entered the mail system on a Saturday afternoon, too late for pick up by Canada post. The envelope has been marked on the front "MAILED AFTER CUT OFF TIME" in both English and French and that mark is shown in figure 2.

Another example of late use of the Bonsecours Market definitive stamp is shown in figure 3. This wrapper is from a "care package" sent by my mom to my son after he had left home and established himself in his own apartment near his job.

The \$6.90 postage on this parcel paid the rate for a 1½kg parcel sent from British Columbia to Ohio which was a postal code 3 destination.

As I write this I have just returned from a large Canadian national show and after spending the better part of one day trying to find "modern" Canadian postal history, I can report it was scarce at the bourse. I urge each of you to work at finding Canadian Elizabethan era commemoratives and definitives used on cover within their period of use. Someday in the not too distant future someone is going to discover this stuff is "difficult to acquire".

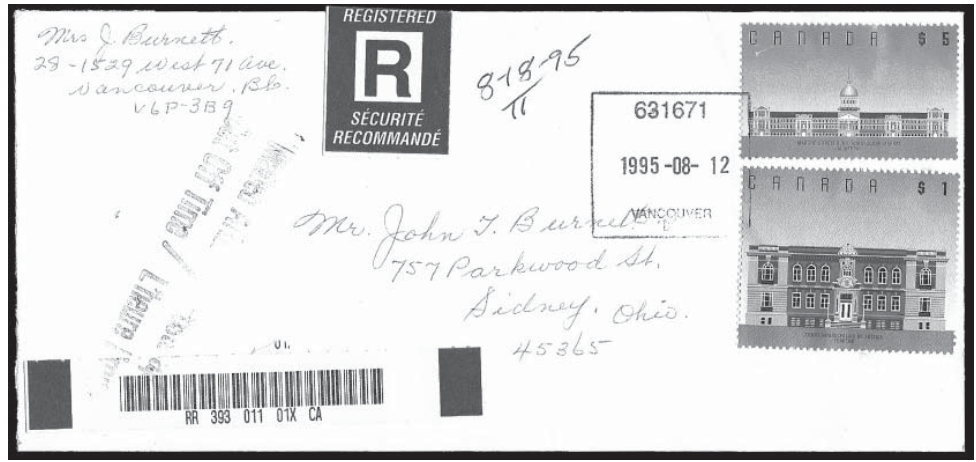


Figure 1

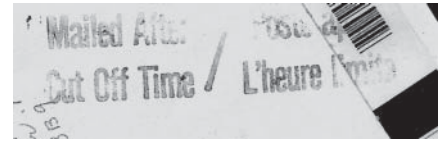


Figure 2



Figure 3