

CORGI TIMES

THE ELIZABETHAN II STUDY GROUP NEWSLETTER

Under auspices of BNAPS - *The Society for Canadian Philately*

June 1993 VOL. I - NO.6

COPIES MAILED 96

With this issue, several changes are being implemented on the first page. Most important is the masthead now incorporates the proposed new BNAPS slogan. I think the adoption of the slogan will be an excellent move. It will go far in communicating to potential new members the opportunities offered by the Study Group and by BNAPS. In addition, Study Group officers and annual dues information are now shown at the bottom of the page.

Also, this issue marks the completion of our first year. It has been a pleasant year and I look forward to the next year as there are several projects in the wings that will enhance future issues. I hope all of our membership agrees, and, for me, the test will be in our renewal rate. We could establish a first with 100% renewals?

A form for 1993-4 annual dues, including a questionnaire, is enclosed. Please, at the earliest opportunity, take a moment and complete the form and return with your renewal. Dues are due as of 1 July, 1993.

In today's multi-currency environment it is not easy to keep the playing field level. We have modified the dues schedule to come as close as possible. Dues for Canadian and US addresses will continue to be US \$9.00. Where US \$ remittance for Canadian addresses is inconvenient we have set the rate at CAN \$12.50. Now that we have a bit of experience we did increase the rate for all other locations to US \$15.00. This only effects three of our members and in each instance the new rate is less than they each voluntarily paid this past year.

This issue contains the financial report for the year prepared by our Treasurer, Bill Schoen. Rather than increase dues or curtail the scope of the newsletter, we hope establishment of a Contributing Member program, as described in the dues notice, will work to establish the Research fund on solid footing. The financial report is on page 77.

Chairman -

Editor - John D. Arn, N. 17708 Saddle Hill Rd., Colbert, WA 99005. Tel. 509-467-5521

Treasurer - William (Bill) H. Schoen, E. 7207 Fairview, Spokane, WA 99212

New members and their major collecting interests are:

Name and Location

Major Collecting Interest

Francois Alarie, Fremont, P. Q.

Varieties and Quebec town
cancels

John Haver, Cleveland, Ohio

General, booklets and
souvenir items

Dean Mario, Saskatoon, Sask.

Postal history including foreign
destinations, postage dues,
and cancellations

Robert McLish, Perth, Scotland

Booklets and plate blocks

Help! Already the following members have evidently moved without a forwarding address and we are accumulating undelivered newsletters for them. Please, if anyone is able to help drop me a line with current addresses for:

1. Emeric de Kovachich was 73 Crescent Ave., Box 957, Hudson, Quebec, J0P 1H0
2. Keith Mussar was #808 - 20 Edgecliff Golfway, Don Mills, Ontario M3C 3A4
3. Herbert K. Nishio was 173 W. 78th Ave., San Mateo, CA

The May/June issue of TOPICS includes complete information on the 50th anniversary BNAPEX '93 convention. If you have not already done so make your arrangements now - the Royal York Hotel in Toronto on Sept. 3-5 and be sure to attend our Study Group meeting chaired by Harry Machum speaking on "Why Collect Canada Elizabethan II". This meeting will be on Saturday, Sept. 4, at 3:00 PM in meeting Room A.

For some time it has become obvious that almost all Canadian auctions now contain at least some Elizabethan lots. Two to three years ago this was not true. It is a trend that can only grow. With each new issue the percentage of Elizabethan content to total grows. Modern Canadian issues continue to produce interesting varieties including gems as has been evident from the Hologram issue. (See Sec. V for an update provided by Kasmir Bileski). It is with a great deal of pleasure I am able to report a new regular column devoted to the "Elizabethan Market Report" written by Dean Mario. Dean is a member of several stamp societies including the ROYAL, BNAPS, PHSC and most recently the ESG. He is currently writing the "Under the Hammer" column in the Canadian Philatelist. His Elizabethan Reports will appear as a regular column unless there is a hiatus in auction activity. There are two reports in this issue as we did not want to delay reporting on the 29 May 1993 Spring Sale by Eastern Auctions Ltd.

Among others let me direct your attention to articles provided by:

- Jeffrey Switt - Section II - An outstanding study & research report.
- Kasmir Bileski - Section V - Hologram update
- John Schmidt - Section VI - Revision A (Complete) of the Heritage Artifacts of 1987 -1992
- Andrew Chung -Section VIII - Special report on Definitive Stamp Packs

ELIZABETHAN II STUDY GROUP
TREASURER'S REPORT
YEAR ENDED JUNE 30, 1993

By: W. (Bill) H. Schoen

Income:

Due from BNAPS		\$ 72.00	
Dues Received	\$865.00		
Less: 1993-4 Dues Paid in Advance	<u>34.00</u>		
Gross 1992-3 Dues Received		831.00	
Donations Received		94.00	
Advertising		122.14	
Miscellaneous (Single Copies, etc.)		<u>15.09</u>	
Total 1992-3 Gross Income		1,134.23	
Less: Exchange Loss		<u>108.74</u>	
Net 1992-3 Income			\$1,025.49

Expenses:

Postage		454.97	
Printing		410.60	
Telephone		54.12	
Paper Supplies		43.66	
Study Group Programs (St. Charles & Ottawa)		33.21	
All Other		<u>5.14</u>	
Total Expenses			<u>1,001.70</u>

Balance of Funds Available 23.79

Research Reserve Provision-1 89.00

Research Reserve Deficit (\$ 65.21) °
=====

1 - US \$1.00 of annual dues is credited to the Research Reserve.

° The 1992-3 current operating deficit of \$65.21 has been covered by a temporary raid on the Research Reserve Fund. Printing costs for 1993-4 are agreed. No increase in postal rates is anticipated for the coming year. Accordingly, except for a small increase in "foreign" country dues no increase is planned in 1993-4 US dollar dues. It is anticipated that the adoption of a "Contributing Member" program will restore the Research Fund to good health.

If there are any questions on the above report please feel free to write:
W. H. Schoen, E. 7207 Fairview, Spokane, WA 99212

ELIZABETHAN MARKET REPORT

By: Dean Mario•

Members know that auction realizations (along with catalogues) are indispensable guides for accurate evaluations of one's holdings. Auctions also provide a good source for material and indicate to collectors the type of items out in the marketplace. This is particularly true when one is interested in undiscovered "finds", errors, and the unusual. This then is the first in a semi-regular series on auction happenings and offerings of Elizabethan material. I hope that it will be of some value to members and comments are always most welcome and appreciated.

One of the few Elizabethan-era lots in the March 19, 1993 Christie's New York sale (Nickle/Clifford-Jones) was lot 814, a 1987-91 39¢ Violet Flag coil vertical strip of eight with top pair appearing imperforate (ghosting of perfs present) in mint NH condition. Estimated at \$280-300, the strip sold for \$288 (price includes 15% buyer's premium).

Ian Kimmerly of Ottawa conducted three public sales (#35-37) on April 28-29, 1993. Some nice items were offered and many found new homes. Lot 0968, VF 1969 50¢ Suzor-Cote imperforate plate block on thick ungummed paper, was one such lot. Stated as "rare, believed to be unique" and estimated at \$1500, the item sold for \$880 (prices include a 10% buyers's premium). Lot 0974 was a 1974 8¢ Chief and Blanket (Pacific Coast Indian series) used single with CDS bullseye and "missing bird on totem" variety. It was estimated at \$90 and sold for \$209! Another fine lot, 1713, was offered to eager bidders. It was an imperforate block of the 1976 8¢ Royal Military College (trivial gum bends and tiny gum disturbance) complete with a 1993 Royal Philatelic Society certificate. Estimated at \$3500, the VF mint block reached \$2860. Another scarce item was lot 1714, the 1978 14¢ Definitive Queen with the red color omitted. Although this mint NH single had a slight adherence, it still managed to realize a respectable \$825 (estimated at \$1250). An imperforate 36¢ Parliament Definitive strip of three (used, tied on piece), lot 1719, rounded out the sale. It was estimated at \$275 and reached \$220.

• Correspondence is welcomed: 933 Dudley Street, Saskatoon, Sask. S7M 1K8

Ed. note - The following report, scheduled for the August issue, is included in this issue in view of the extensive number of Elizabethan varieties that were included in the sale. Mr. Mario's report covers 23 lots with a realization of \$25,685 compared with a pre-sale estimate of \$49,700. (All values exclude the 10% buyers premium). The report follows.

The May 29 sale conducted by Eastern Auctions gave collectors a wonderful opportunity to acquire items from the exceptional collection of the late Gerry Newman. Most items were very fine, never hinged, and the overall condition of the Elizabeth II collection was choice.

Lot 352 was a nice example of the 1954 3¢ Carmine Wilding imperforate between pair from the unique sheet. Estimated at \$2000, the pair reached \$1500. The following lot (353) was a very fine NH example of the 5¢ St. Lawrence Seaway invert which went to a new home

for \$9000 (\$13,500 estimate). Another variety (again very fine NH), the 1969 6¢ Christmas issue with black missing (lot 358), reached \$1100 despite a \$2500 estimate. Lot 361 was a 1971 7¢ Maple Leaf without gray inscription and it sold for a respectable \$1300 (\$4000 estimate).

Modern imperforate rarities seemed quite common in this sale. Lot 365 featured a 1975 8¢ Subarctic Indian pair imperf between but with an additional row of vertical per's right. It sold for \$450 against a \$750 estimate. An 8¢ Blue Caricature corner block (lot 367) with imperf margin found a new home for \$325 despite a \$500 estimate. Lot 373 was a 1973 15¢ R.C.M.P. imperf pair along with an additional error of the 10¢ value double printed on the top stamp. It sold for a reasonable \$220 (\$750+ estimate). Another "ordinary" 15¢ imperf pair (lot 374) but with no "extra" error sold for the same amount!

Described as one of Canada's "most spectacular errors", lot 378 was a double-printed very fine NH pair of the 1976 8¢ Royal Military College. It reached a high bid of \$1900 but still far below its \$5000 estimate. A strip of ten of the same stamp (lot 379) with one pair imperf horizontally and part vertically sold for \$600, considerably less than the \$1500 estimate. Lot 380, a very fine NH example of the 1977 25¢ Royal Visit with missing silver, sold for \$450 (\$1500 estimate). Another Canadian rarity, the 1978 14¢ Queen definitive with red missing (Greene Foundation Certificate) in lot 384, realized \$850 (\$2000 estimate).

Another nice error was lot 386, the 1978 50¢ Prairie Street Scene "Ghost Town" with dark brown missing (only 50 known) in very fine NH condition. It went for \$1700 although an estimate of \$2500 was given. Other errors in the same set were also offered. Lot 388 was the \$1 Fundy National Park with missing inscription. It found a home for \$350 (\$1000 estimate). The following lot (389) was the \$2 Kluane National Park value with missing silver inscription and it sold for a reasonable \$220 against a \$750 estimate. An example of the 1979 35¢ Christmas issue with missing gold (lot 398) was offered as well to eager bidders. A new buyer took it home for \$600 (\$1750 estimate).

Collectors of modern errors were delighted in the offering of the very scarce 1981 17¢ Canadian Painter (Frederick Varley) issue in imperf pair (twelve known). Although creased, lot 399 went for \$750 (\$2000 estimate). Lot 401 was a 1981 "A" Definitive Coil imperf pair and sold for a reasonable \$160, although estimated at \$450. The 1983 32¢ Nickel Discovery missing silver error (lot 411) went for \$280 (\$1000 estimate), and a 1986 \$5 La Maurice National Park with missing inscription (lot 412) realized a respectable \$1800 (\$2500 estimate). Lot 418, a 1989 \$2 McAdam Train Station sheet margin imperf pair, found a new home for \$550 although it was estimated at \$1250. An unusual error was found in lot 419. It was the 1989 38¢ Flag Self-Adhesive with "almost the entire green color missing" in a pair with a normal stamp. Estimated at \$250+, it sold for \$160. Officials were well-represented in this sale and indicative of the quality was lot 516, a 1963 1¢ Brown Cameo block of four with the rare double "G" surcharge variety. It found a new home for \$1200 against a \$3300 estimate. Many choice items were undoubtedly acquired by some very happy bidders in this sale. Eastern Auctions can be reached at Box 250, Bathurst, New Brunswick, E2A 3Z2. Remember to bid smart and to bid often. Until next time

Wanted: #648 "Red Streaker" variety vertical strip of ten. #648 "Purple Streaker" variety. #649 Closed "5" variety. #5411 "Bug on Leaf" variety plate block. Any varieties of #492 Suzor - Cote.
David Schmit, 781 S. 180th St., Dresser, WI 54009 4 - 93

SECTION II - WILDINGS - The following article, written by Jeffrey Switt, appeared in the January 1993 issue of "BEAVER CHATTER", the Newsletter of the Prairie Beaver Regional Group of the British North America Philatelic Society, Ltd. Jeff is a member of the Board of Directors of BNAPS, Editor of "Beaver Chatter" and a member of the Elizabethan II Study Group.

Registered Parcel Post . . . a truly unique rate

Figure 1 shows a postal tag clearly pre-printed "Parcel Post" along with a rectangular registration marking. But, section 167 of the *Canada Official Postal Guide* (1959) states, "Articles prepaid at parcel post rates cannot be registered but may be insured." So how can there be registered parcel post?

The answer lies in section 306 of the same guide in which the postal treatment of Ballot Boxes is discussed. This section addresses three situations: (1) ballot boxes sent prior to a Federal election, (2) ballot boxes sent after a Federal election, and (3) ballot boxes used in provincial elections. Just which directive applies to the tag in question requires a little investigation.

Paragraph 1: *"Ballot boxes sent prior to a Federal election...by Returning Officers addressed to Deputy Returning Officers are liable to postage at parcel post rates. Returning Officers may, if they desire, send ballot boxes registered at parcel post rates, plus the registration fee."*

Since the tag is clearly addressed to a Returning Officer from a Deputy Returning officer, this box must have been sent following an election, not prior to one, so the instructions in the first paragraph do not apply.

Paragraph 2: *"Ballot boxes used in Federal elections or for Canada Temperance Act votes, may, on or subsequent to polling day, be mailed by Deputy Returning Officers to Returning Officers registered, free of postage..."*

As the tag clearly contains postage in the amount of \$1.07 (Figure 2) paragraph number two does not apply as this paragraph authorizes the subsequent registered return of such a ballot box **FREE** of postage. Note in addition that the tag bears the inscription "Registered Free under Section 50-11) of the Canada Election Act. (This writer would appreciate receiving a copy of this section from any reader who can provide same.)

Paragraph 3: *"Ballot boxes used in provincial elections and plebiscites may be mailed at parcel post rates and registered on payment of the registration fee."* This, by process of elimination, is the likely application.

Now let us turn to the \$1.07 postage and discover how this rate was determined. First, the domestic registration fee for minimum value was set at 20 cents between April 2, 1951 and November 1, 1963. Our tag is dated June 19, 1962, within this span of years, so that leaves 87 cents yet to account for.

Our tag was posted at Thurso, Quebec and is addressed to St Andre-Avellin, Quebec a town just over 20 road miles away. Figure 3 reproduces the parcel post rates of postage on parcels originating within the province of Quebec. If we refer to the second horizontal row of rates assigned to "Any post office beyond 20 miles but within the Province of Quebec" we will find the closest listed rate not exceeding 87 cents to be 82 cents for a 12 pound parcel. Now by referring to the third footnote line we find that parcels were liable to additional postage of 1 cent per additional ounce on excess weight over the even pound rate until the next pound rate is reached. Thus the difference between the 82 cent posted rate and the 87 cents in postage is accounted for by the ballot box weighing 5 ounces (thus 5 cents) in excess of 12 pounds.

This writer acknowledges that this may be a bit esoteric for many readers. It is, however, these unusual and elusive examples of postal history minutia which help to make our hobby more interesting.

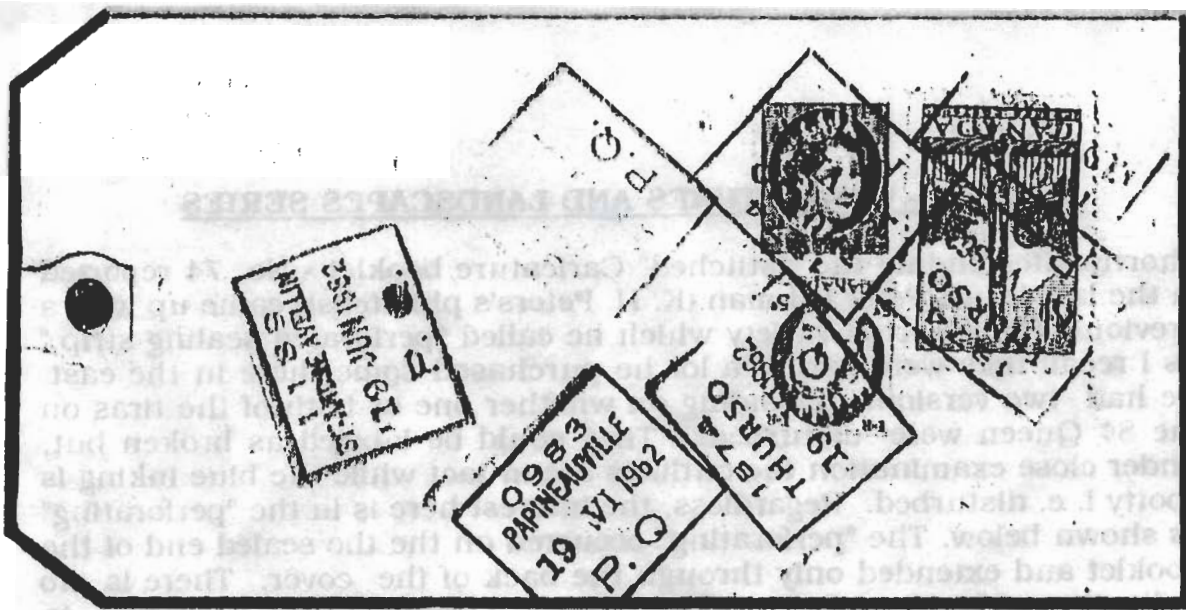


Fig. 1

Form 121 - 6-59-45M
BALLOT BOX
 Polling Station No. 109
 Sent by J. Ernest [Signature]
 D.R.O.
 whose P.O. Address is Amara RR1
Qui

CANADA ELECTIONS ACT
 P.Q. PARCEL No. 483
 Registered FREE Under Section 50 (1) of the Canada Elections Act.

To M. J. [Signature]
 Returning Officer for the Electoral District
 of St. Germain [Signature]
 P.O. Address Qui

Fig. 2

Rates of postage on parcels mailed in the province of QUEBEC
 Limit of weight for parcel post is 25 lb.

Addressed to	1	2	3	4	5	6	7	8	9	10	11	12	13	14	15	Over 15 lb. and up to 20 lb.	Over 20 lb. and up to 25 lb.
	lb.	lb.	lb.	lb.	lb.	lb.	lb.	lb.	lb.	lb.	lb.	lb.	lb.	lb.	lb.	\$ ¢	\$ ¢
Any post office within 20 miles* including place of mailing....	.10	.12	.14	.16	.18	.20	.22	.24	.26	.28	.30	.32	.34	.36	.38	.45	.55
Any post office beyond 20 miles but within the Province of Quebec.....	.16	.22	.28	.34	.40	.46	.52	.58	.64	.70	.76	.82	.88	.94	1.00	1.20	1.40
Any post office in Ontario, Nova Scotia, New Brunswick or Prince Edward Island....	.17	.25	.33	.41	.49	.57	.65	.73	.81	.89	.97	1.05	1.13	1.21	1.29	1.55	1.85
Any post office in Manitoba or Newfoundland.....	.18	.28	.38	.48	.58	.68	.78	.88	.98	1.08	1.18	1.28	1.38	1.48	1.58	2.00	2.40
Any post office in Saskatchewan	.19	.31	.43	.55	.67	.79	.91	1.03	1.15	1.27	1.39	1.51	1.63	1.75	1.87	2.35	2.85
Any post office in Alberta or British Columbia20	.34	.48	.62	.76	.90	1.04	1.18	1.32	1.46	1.60	1.74	1.88	2.02	2.15	2.75	3.50
Any post office in Yukon—Rate shown on page 59																	

Fig. 3

Parcels up to and including 12 ounces in weight are subject to a minimum charge of 5¢ covering a weight of 4 ounces, plus 1¢ for each ounce in excess of 4 ounces, except within the 20 mile zone where the charge shall not exceed 10¢.

Parcels over 12 ounces but not exceeding one pound in weight are liable to the one pound rate to the Province of destination. (Within the 20 mile zone the 10¢ rate shall apply.)

Parcels are liable to 1¢ an ounce on excess weight over even pound until the next pound rate or group rate is reached.

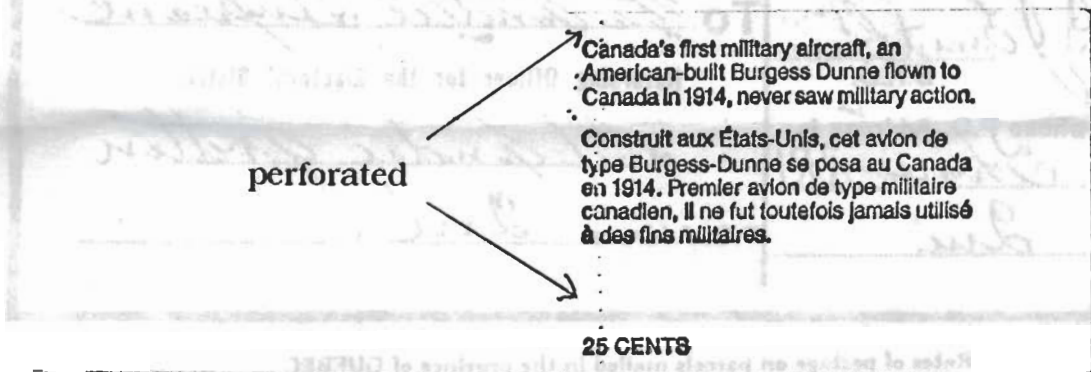
(For examples respecting the application of these rates see pages 59 & 60.)

* This rate also obtains in cases where the 20 mile area extends into an adjacent province.

| Rate on parcels to certain post offices in NORTHERN BRITISH COLUMBIA shown on page 59.

SEC. III - CARICATURES AND LANDSCAPES SERIES

Shortly after finding the "stitched" Caricature booklet - No. 74 reported in the last issue, Peter Lehman (K. H. Peters's philatelist) came up with a previously unreported variety which he called "perforated sealing strip." As I recall they were part of a lot he purchased somewhere in the east. He had two versions depending on whether one or both of the tiras on the 8¢ Queen were "disturbed". They could be labeled as broken but, under close examination the outlines are in tact while the blue inking is spotty i. e. disturbed. Regardless, the interest here is in the "perforating" as shown below. The "perforating" occurred on the the sealed end of the booklet and extended only through the back of the cover. There is no indication of "perforating" on the top cover. The "perforating" is just to the left of the sealing strip and just a bit over 5mm from the edge of the cover. In one, the "perforations" run between the 2 & 5 in 25¢ while in the other copy the line bisects the 5 in 25¢ The "perforations" are 2mm apart. In the "stitched" version the stitches are 3mm apart. Are the two related? Considering the scarcity of both varieties it would seem some sort of experiment/s were being conducted and their similarity indicates they could have been from either the same project or from similar projects. Until more information is known it is not possible to say.



perforated
(top to bottom)

THIS IS A QUALIFIED 5 STAR RECOMMENDATION for a new product.
The SUPER GAGE measures the Gauge, the Size and the Design of a stamp. Especially easy on cover or as above. I have not yet used the perforation gauge enough so only a qualified award at this time. Offered by Ultra-Vision Inc., Box 8556, Northfield, IL 60093. Item No. SG9107.

SECTION V - COMMEMORATIVES - HOLOGRAM UPDATE

Much has been written in the philatelic journals on Canada's missing hologram stamp. Thanks to Kasimir Bileski, the Corgi Times was able to report the early "findings" which surfaced in this issue. In addition to spacing variations and two plate varieties the big news has been the missing hologram errors.

The June 26, 1993 issue of LINN'S STAMP NEWS has a full page article on the hologram issue written by Mr. Bileski. Anyone following these stamps should be sure to obtain a copy of this article as I am sure it will be the key information reference source for the issue for years to come.

A summary of the present status of the errors, quoting from Mr. Bileski, as also published in the article, follows:

"My firm found 31 in about one tenth of the printing. Based on that, there must be 270 more that were sold to the public. If that figure is correct, then 65 more as singles have been accounted for. The rest? Unless someone after nearly nine months since issue admits to having a pane - and he has to be a knowledgeable collector or dealer - what is known to exist so far must be the sum total. Any errors that were sold to the public are long gone. Your average buyer of postage stamps could care less what they put on items to be mailed, unless of course the stamps they get sometimes fail to have the value. Then there are strenuous objections and a demand to exchange for 'good' stamps. In this case the Missing Hologram would not bother most anyone as the figure 42 was there in the blank space.

To forestall inquiries, please note I have none for sale. All on hand are spoken for by my customers."

One important piece of information was not included in the LINN's article. Previous philatelic press articles have speculated on whether the error may be faked. Mr. Bileski reports as follows:

"On the subject of potential fakes there is no danger. It is just not possible to manufacture a 'genuine' fake equal in all respects to the genuine error. Do not waste your time on any singles. All known genuine come so far only in complete panes and that is the way they should be bought from any dealer who has any for sale. The exceptions are pairs or blocks properly identified as coming from the known 10 error panes. I'm willing to check any complete panes that have a missing hologram and will certify if genuine."

One of our members, Arthur Richards, will be reporting in the August issue on some interesting findings from his study of the Hologram issue.

SECTION VI - 1982-87 DEFINITIVE. ARTIFACTS & NATIONAL PARKS

Summary of Heritage Artifacts (Revision A)

By: John G. Schmidt
2649 Shadow Court
Ft. Collins, CO 80525

Explanation of table contents:

- ◆ Under the column entitled "Value" -
 - ◆ The denomination of the stamp along with its subject.
 - ◆ Where possible, Scott's numbers are listed from the "Unitrade Specialized Catalogue of Canadian Stamps", 1993 edition.
- ◆ Under the column entitled "Perforations" -
 - ◆ I have used the formula $G = 20N/W$ in which $G =$ Gauge, $N =$ Number of teeth along the edge of the stamp, and $W =$ Width (or Height) of the stamps in millimeters. The width and height dimensions were taken from stamp details supplied by Canada Post in their various publications. The number of teeth were counted. Gauge numbers were rounded to the nearest tenth.
 - ◆ The number of teeth are given in straight brackets "[]" and stamp design dimensions are given in curly brackets "{}".
- ◆ Under the column entitled "Paper" -
 - ◆ Papers listed are as follows:

S = Slater	C = Clark
R = Rolland	H = Harrison
A = Abitibi	
- ◆ Under the column entitled "Printer" -
 - ◆ Printers listed are as follows:

APL = Ashton-Potter Limited
CBN = Canadian Bank Note Co.
 - ◆ I have also indicated the existence of inscription blocks "[Insp]" (Philatelic Stock) or blank corner blank corner blocks "[Blk]" (Field Stock).
- ◆ Under the column entitled "Notes" -
 - ◆ I have indicated the tagging of the stamps listed.

Heritage Artifacts

Value	Perforations	Paper	Printer	Notes
1¢ Decoy (917)	14.0[14]x13.3[16] {20mm} {24mm}	A	APL[Insp]	No Tagging
(917a)	13.0[13]x13.3[16] {20mm} {24mm}	H	CBN[Insp]	No Tagging
(N/L)	13.0[13]x13.3[16] {20mm} {24mm}	C	CBN[Blk]	No Tagging
(N/L)	14.0[14]x13.3[16] {20mm} {24mm}	R	APL[Insp]	No Tagging
2¢ Spear (918)	14.0[14]x13.3[16] {20mm} {24mm}	A	APL[Insp]	No Tagging
(918a)	13.0[13]x13.3[16] {20mm} {24mm}	C	CBN[Insp]	No Tagging
(N/L)	13.0[13]x13.3[16] {20mm} {24mm}	H	CBN[PI #2]	No Tagging
(N/L)	14.0[14]x13.3[16] {20mm} {24mm}	R	APL[Insp]	No Tagging
3¢ Lantern (919)	14.0[14]x13.3[16] {20mm} {24mm}	A	APL[Insp]	No Tagging
(919a)	13.0[13]x13.3[16] {20mm} {24mm}	H	CBN[Insp]	No Tagging
(N/L)	14.0[14]x13.3[16] {20mm} {24mm}	R	APL[Insp]	No Tagging
5¢ Bucket (920)	14.0[14]x13.3[16] {20mm} {24mm}	A	APL[Insp]	No Tagging
(920a)	13.0[13]x13.3[16] {20mm} {24mm}	C	CBN[Insp]	No Tagging
(N/L)	13.0[13]x13.3[16] {20mm} {24mm}	H	CBN[PI #2]	No Tagging
(N/L)	14.0[14]x13.3[16] {20mm} {24mm}	R	APL[Insp]	No Tagging

Value	Perforations	Paper	Printer	Notes
10¢ Weather-cock (921)	14.0[14]x13.3[16] {20mm} {24mm}	A	APL[Insp]	2 Side Tagging
(921a)	13.0[13]x13.3[16] {20mm} {24mm}	H	CBN[Insp]	4 Side Tagging
(N/L)	14.0[14]x13.3[16] {20mm} {24mm}	R	APL[Insp]	2 Side Tagging
20¢ Skates (922)	14.0[14]x13.3[16] {20mm} {24mm}	A	APL[Insp]	2 Side Tagging
(N/L)	14.0[14]x13.3[16] {20mm} {24mm}	R	APL[Insp]	2 Side Tagging
25¢ Butter Stamp (1080)	14.0[14]x13.3[16] {20mm} {24mm}	R	APL[Insp]	2 Side Tagging
37¢ Plough (927)	12.0[18]x12.5[15] {30mm} {24mm}	A	APL[Insp]	2 Side Tagging
(N/L)	12.0[18]x12.5[15] {30mm} {24mm}	C	APL[P1 #2]	2 Side Tagging
39¢ Settle-Bed (928)	12.0[18]x12.5[15] {30mm} {24mm}	H	APL[Insp]	2 Side Tagging
42¢ Linen Chest (1081)	12.0[18]x12.5[15] {30mm} {24mm}	R	APL[Insp]	2 Side Tagging
48¢ Cradle (929)	12.0[18]x12.5[15] {30mm} {24mm}	A	APL[Insp]	2 Side Tagging
(N/L)	12.0[18]x12.5[15] {30mm} {24mm}	C	APL[P1 #2]	2 Side Tagging
50¢ Sleigh (930)	12.0[18]x12.5[15] {30mm} {24mm}	H	APL[Insp]	2 Side Tagging

Value	Perforations	Paper	Printer	Notes
55¢ Iron Kettle (1082)	12.0[18]x12.5[15] {30mm} {24mm}	H	APL[Insp]	2 Side Tagging
64¢ Wood Stove (932)	12.0[18]x12.5[15] {30mm} {24mm}	A	APL[Insp]	2 Side Tagging
(N/L)	12.0[18]x12.5[15] {30mm} {24mm}	C	APL[P1 #2]	2 Side Tagging
68¢ Spinning Wheel (933)	12.0[18]x12.5 {30mm} {24mm}	H	APL[Insp]	2 Side Tagging
72¢ Hand-drawn Cart (1083)	12.0[18]x12.5[15] {30mm} {24mm}	R	APL[Insp]	2 Side Tagging

PLANNING CALENDAR

This is a listing of major exhibitions and bourses with a large content of both Canadian Exhibits and Canadian Dealers. Minimum criteria for listing: Two day event - 1000 page exhibition - 18 Dealer bourse with more than 50% offering Canadian material. The goal is to list events far in advance to encourage either exhibiting or attendance and preferably both.

1993

September 3-5, Toronto, On - BNAPEX '93, The Royal York Hotel

1994

March 18-20, ESCPEX 94, the Edmonton Spring National, Europa Conference Centre, West Edmonton Mall

May 6-8, ORAPEX '94, Ottawa, Ont. the RA Center

June 10-12, OGOPEX, ROYAL 1994, Vernon, B. C., the Vernon Lodge

September 29-30 & October 1, BNAPEX '94, Burlington, VT., the Radisson Hotel

1995

September (first half), BNAPEX '95, Edmonton, AB

AVAILABLE: One copy of "The Caricatures and Landscapes Definitives of Canada" by David Gronbeck-Jones. Excellent US \$6.00 pp. One copy of the "Centennial Section" of the Canadian Stamp Handbooks edited by Michael Milos. Like new. US \$5.00 pp. Also, same series, "First Cents" Section. Like new. US \$2.00 pp. John D. Arn, N 17708 Saddle Hill Rd., Colbert, WA 99005.

SECTION VIII - ALL OTHER - NEW DESIGN DEFINITIVE STAMP PACKS

Andrew Chung has made available a number of articles that have appeared in the CANADA POST EMPLOYEES PHILATELIC SOCIETY - BULLETIN. Mr. Chung serves as the Editor and we are indebted to him and to the Bulletin for the support.

With the issue of new rate and new design definitives on 27 December 1991, stamp packs of the new rate and new design definitives were also released.

Available with or without the marginal inscription printed on the right or bottom selvedge of the pane, all unsealed packs contain panes with the marginal inscription. Sealed packs may contain panes with or without the marginal inscription trimmed off the selvedge.

Packs of 10 of the 42 cent Queen and 42 cent Flag were also discovered with differences in the perforating process. Vertical perforations of the 42 cent Queen pane extend to the top margin only as well as the top and bottom margins. Horizontal perforations of the 42 cent Flag pane extend to the right margin only as well as the left and right margins. The chart below summarizes all variations known to-date.

Promotional messages featured on the cover of each new rate and new design definitive stamp pack are summarized as well.



(left): vertical perforations extend to top margin only

(right): vertical perforations extend to top and bottom margins

(above): pane with marginal inscription
(below): pane without marginal inscription



BASIC SPECIFICATIONS

Description	Pane Layout	Perforation	Promotional Messages Featured on the Cover
42 cent Queen Elizabeth II Pack of 10 - \$4.20	10 (2 x 5)	13.15 x 13.7	Special Letter / Canada 92
42 cent Flag Pack of 10 - \$4.20	10 (5 x 2)	13.7 x 13.15	Special Letter / Canada 92
Pack of 25 - \$10.50	27 (9 x 3)	13.7 x 13.15	Canada 92 / Special Letter
Twin Pack of 25 - \$21.00	52 (13 x 4)	13.7 x 13.15	Canada Post Money Order / Trace Mail Products
48 cent McIntosh Apple Pack of 5 - \$2.40	6 (3 x 2)	14.45 x 13.9	Special Letter / Canada 92
84 cent Stanley Plum Pack of 5 - \$4.20	6 (3 x 2)	14.45 x 13.9	Special Letter / Canada 92

THE VARIATIONS

Description	Unsealed Cover with MI			Sealed Cover with MI			Sealed Cover without MI		
	A	B	C	A	B	C	A	B	C
42 cent Queen Elizabeth II Pack of 10	x			x	x				x
42 cent Flag Pack of 10		x	x		x	x			x
Pack of 25		x			x				x
Twin Pack of 25		x			x				x
48 cent McIntosh Apple Pack of 5		x			x				x
84 cent Stanley Plum Pack of 5		x			x				x
A (42 cent Queen Elizabeth II) - vertical perforations extend to top margin only (remaining values) - horizontal perforations extend to left margin only									
B (42 cent Queen Elizabeth II) - vertical perforations extend to top and bottom margins (remaining values) - horizontal perforations extend to left and right margins									
C (42 cent Queen Elizabeth II) - vertical perforations extend to bottom margin only (remaining values) - horizontal perforations extend to right margin only									

SEC. VIII - ALL OTHER - POSTAGE DUES

The "red" postage due series of stamps are an interesting area. Significant stocks on cover are difficult to find. Below the Editor reviews a recent lot confirming, once again, when you have an opportunity to acquire a bulk lot in your area of interest never hesitate.

This is a summary of an analysis of a lot of 85 "Red" postage due items. The lot spanned a period of about 5 years as follows:

1967	8 items	1971	3 items
1968	14	1972	1
1969	37	Unknown	13
1970	9	Total	<u>85</u>

The material consisted of: 40 covers with "red" dues attached; 33 Post Office tally tabs (two of which are pictured on page 1 - 5 -74); and 12 pieces on or off paper. The entire lot had cleared through two post offices: The covers were processed by the Nelson, B. C. post office and were primarily for the Nelson Daily News; the tally tabs were processed by the Trail, B. C. post office and were exclusively for the account of COMINCO (Consolidated Mining & Smelting Co., Ltd.).

During the period two issues of the "red" dues were in use. They are identified by the size of the stamps. The first issue measures 20mm X 17mm and the second issue measures 20mm X 15.75mm. The values released in each issue are shown below:

First Issue:	1¢	2¢	3¢	4¢	5¢	6¢	-	10¢	-
Second Issue:	1¢	-	-	4¢	5¢	-	8¢	10¢	12¢

The 85 lots used a total of 202 stamps:	14	34	2	24	22	20	10	54	22
---	----	----	---	----	----	----	----	----	----

Supplied from:									
First issue:	14	34	2	20	18	20	-	41	-
Only 2nd issue:							10		22
Second issue stock:	-			4	4	-		13	

This data is not sufficient to indicate any scarcity but it does indicate, these two post offices, stocked substantial quantities of the low values of the first issue. If typical, second issue usage may well be a bit more scarce.

Shown on the next page are interesting covers included in the lot.

- A. Cover with 4¢ due was remarked in ink to 2¢ and paid by 2¢ due stamp - waiving the twice deficiency regulation.
- B. Cover with 4¢ due was paid by 2¢ plus 12¢ due stamps - collecting 6 X the amount due.
- C. Cover without stamp dated 10 XI 72 rated 16¢ due (twice 8¢ rate) but collected 32¢ in postage due.
- D. Cover without stamp dated 27 VI 69 rated 2¢ due (waiving penalty) and collected 2¢ postage due.
- E. Cominco 16¢ due paid with 10¢ "red" due from First Series and two 3¢ due's issued in 1965 as part of the 1935 issue.



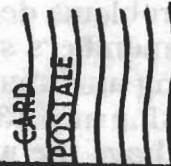
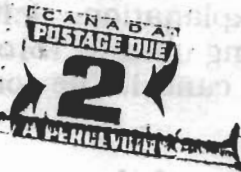
POST CARD
CARTE POSTALE



NELSON DAILY NEWS,
NELSON, B. C.

CARD OUT	JUN 18 1969
2nd	
Final	
Ret. Date	

A.



NEWS,

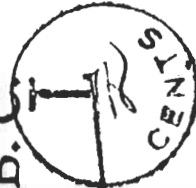
NELSON, B.C.



CANADA

4 CANADA

D.



Comme



169 Due



Not a fee

E.

POST CARD
CARTE POSTALE



NELSON DAILY NEWS,
NELSON, B. C.



CARD OUT	MAR 19 1969
2nd	
Final	
Ret. Date	

B.

RENEWAL

FROM

ADDRESS

W. J. Blapel
Box 1603, Ld
Route #10



C.

CIRCULATION DEPARTMENT,
THE DAILY NEWS,



KNOW WHAT'S HAPPENING
— READ THE DAILY NEWS

SECTION VIII - ALL OTHER - TWIN CANCELS - ANSWERED!!

In Issue No. 4 - Pages 55-57 - the article dealt with "double" or "Twin" cancels and speculated on their reason for being and some of the apparent problems depicted by their use. On page 70 in issue No. 5 two of our members shed a bit of light and now, thanks to Jeff Switt for remembering and sharing and thanks to Pete Wiedeman for reporting on page 12 of Journal 13 of the Postal History Society of Ontario (now PHSC) we have the whole explanation. Jeff also noted this type of cancel is also apparently being used in Toronto as the latest Hennok catalog had a similar format cancel. The complete PHSO article follows:

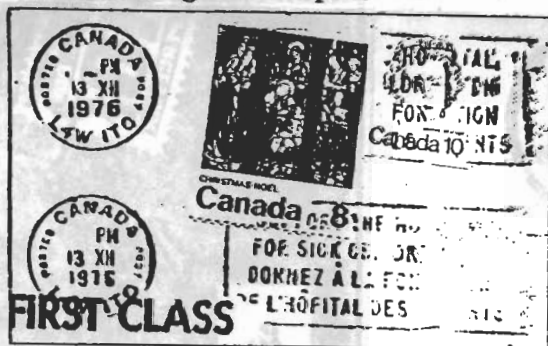
WASTEBASKET WANDERINGS REVEAL

First Twin Machine Cancel !

by Pete Wiedemann

FIRST TWIN MACHINE

It is amazing what the daily waste basket can yield in respect to new discoveries. The two illustrations above bear this out! Fig.1 shows what I found on some large flats (oversize first class mail matter, usually large flat envelopes) that were cancelled by the new device, which at first looked like a new roller device resembling those U.S. devices commonly seen on similar large envelopes.



Curious as usual, I inquired at the Gateway Postal Facility (by mail) and a reply was quick in the coming, from their Mr. M. B. Bell, who cleared up the matter to my satisfaction. As requested, Mr. Bell supplied several "proofs" of this device, one of which is shown in Fig.2.



According to Mr. Bell, this device was made at the facility by mounting a second die on top of the first of a Pitney-Bowes Model "G" Cancelling Machine - an improvisation necessary due to the difficulty experienced in effectively cancelling all stamps on large envelopes, which invariably had more than just the usual single stamp frankings. Moreover, a great many stamps were found too far from the corner of the envelopes making the cancelling effort more of a hit-or-miss event.

It is believed that the twin device had been in use since about July 1976 at Mississauga postal facility although I cannot recall seeing an example any earlier than about early October 1976. An official early or first use date is not known - as this was a creation due to necessity and not for postal historians or collectors. Also, it is known that a proof (prior to use) does not exist at the Postal Museum as this device was fabricated from materials on hand at the facility - and not requisitioned as would otherwise be the case with new devices.

It usually is found with a slogan in the bottom half and a wavy killer in the top half. Regretably most impressions are weak on the bottom half, and our own examples shown had to be retouched for reasonable reproduction.

One final note on this item, as can be seen one or both slogan portions of it can bear slogans independantly and it is possible for the dies to be inverted in a similar manner.

On April 1, 1977 this device was found with the upper die portion only, completely inverted. On April 15 it was also found with the "15" of the date portion on the upper die inverted.

PAPER TRAILS

BY RICK PENKO

Aniline Ink Revisited

I received a letter from John Jamieson on the aniline ink question. I will let him have the last word on this subject.

Dear Rick,

I just read your notes on the **BLUE** so-called aniline inks....years ago I used to sell these as a variety for a few \$'s until I found that storage in "soft" plastic sheet protectors or plastics (such as the coin pages that hold the 2" x 2" coin holders) high in chemical "plasticizers" as noted in the NPM letter caused these. They are cute but they are **UNINTENTIONAL COLOUR CHANGELINGS** caused by the plastic holders. All stamp mounts and pages are now chemically inert but if you use an old plastic page (I think the sample enclosed might do it) you will see what i mean. I have no idea how long it takes to change them, but I would expect many months.

P.S. I no longer sell these **ANILINE** varieties....I give them away when I run across them.

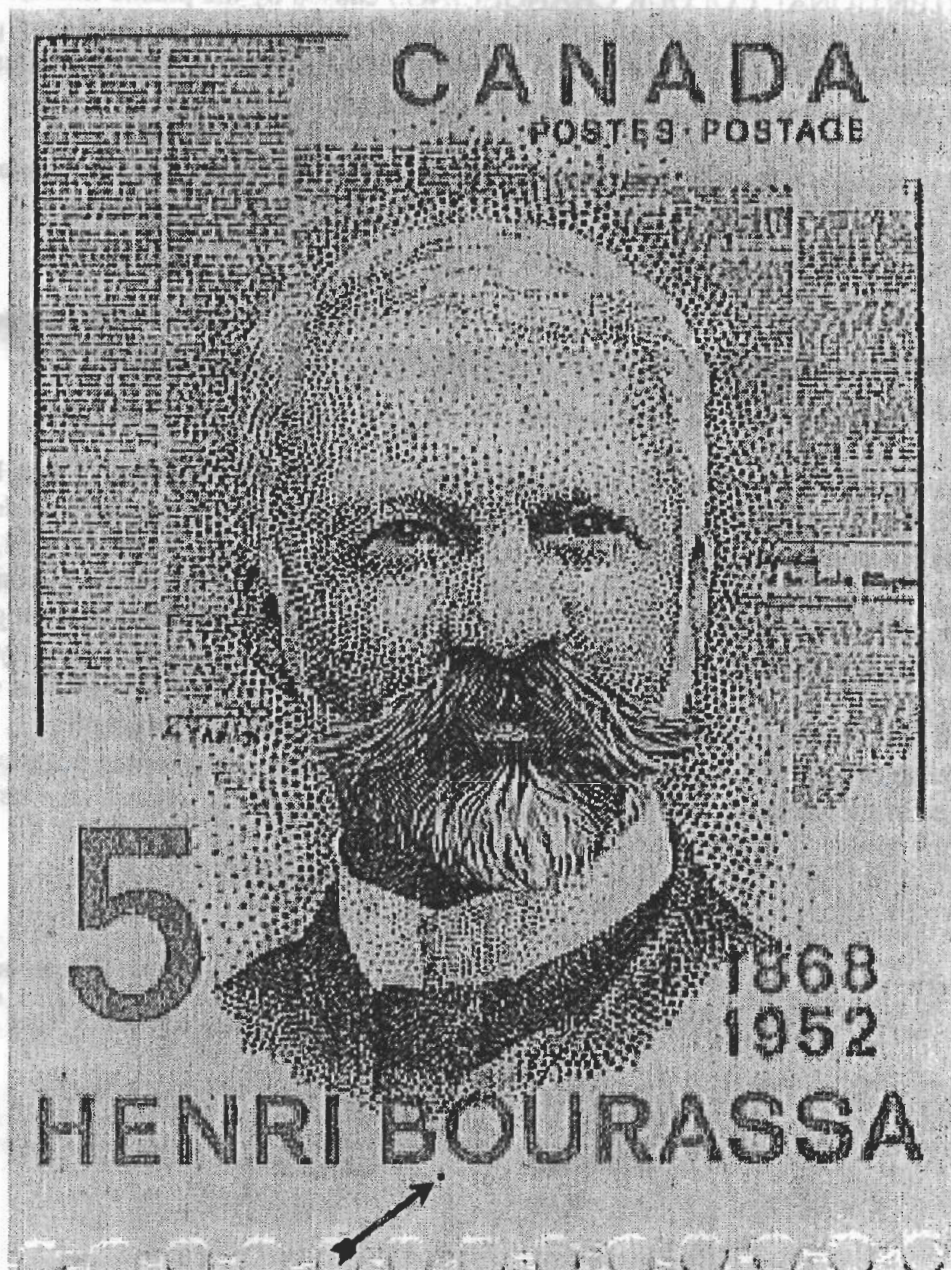
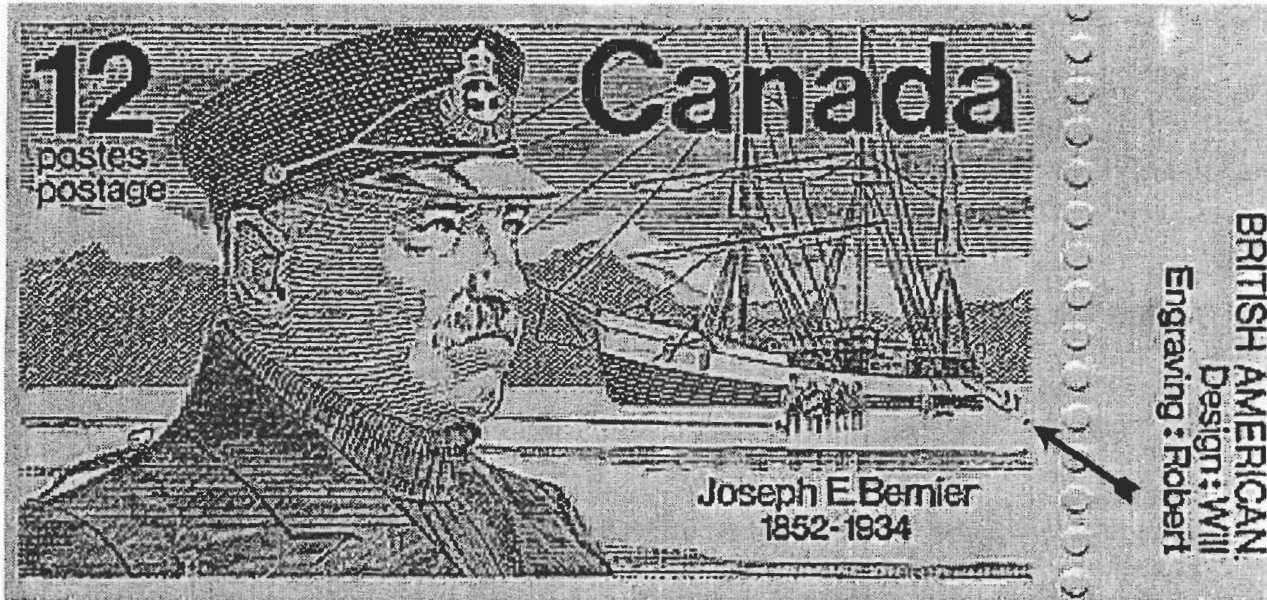
John Jamieson
Saskatoon, Saskatchewan

Variety Listings

As of early June, I have received a few small listings of ER2 varieties. These have ranged from hickies, paper varieties, scratches, misregistered copies etc. To determine how far in-depth we should go, a few outside comments would be appreciated. One question is do we want to list all types of varieties (e.g.. paper florescence, consistent and non-consistent plate flaws) under one master grouping or do we want to segregate them into multiple listings? Is the Scott numbering system the way to go in identifying them or would our own system be more appropriate? If you have a list of varieties or just would like to make some suggestions please do not hesitate to contact me.

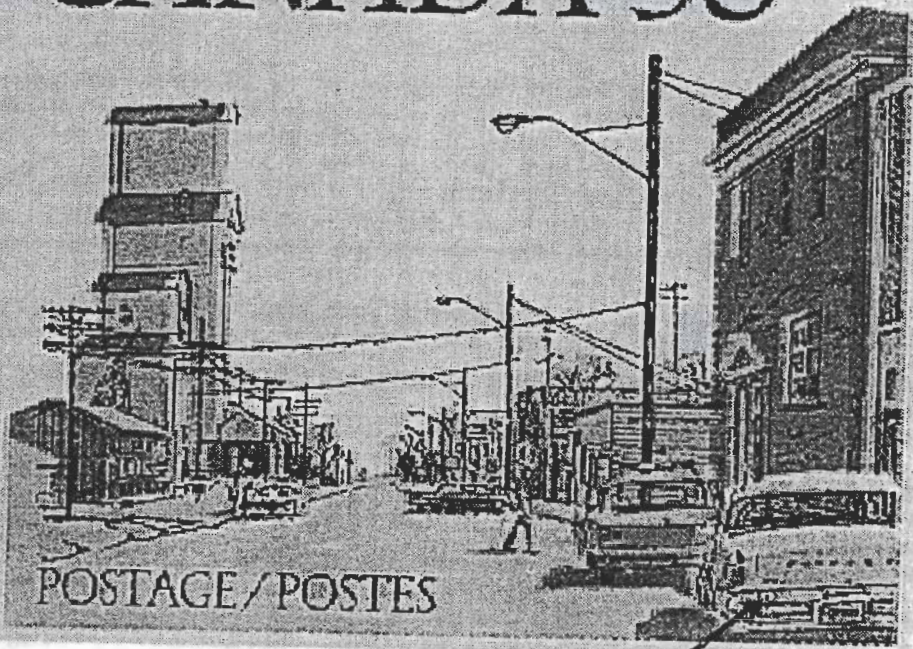
For those of you who know a little about computers, I am also keeping scanned graphic images of the varieties that have been sent to me. A picture is worth a thousand words when it comes to showing a variety.

Ed note: On the following pages three examples of scanned graphic images are shown at 62% of scanned size. Please forward your comments and Input on this project direct to: Rick Penko, 321 Centennial Street, Winnipeg, MB R3N 1P6



No. 2 : CANADIAN BANK
Design : Tom

CANADA 50



POSTAGE / POSTES

DOT ON
Dumell

NEED HELP TO DECIPHER AND EXPLAIN THIS CANCEL

SCP ETCSL 114 H4T 1A0 930217 03:01 MMMM

Reply to:

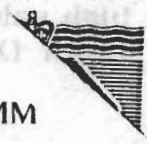
Jon C. Johnson
717 25th Avenue NW
Calgary, AB
Canada T2M 2B4

cc: Editor

The cover Klussendorf
cancel as well as a straight
line cancel similar to some
seen from the U. S. was received
on a letter from Richmond, PQ. It
reads:

SCP ETCSL 114 H4T 1A0 930217 03:01 MMMM

Jon Johnson asks if this is a new type of cancel or
some type of test?



ELIZABETHAN II MARKET PLACE

Classified listings in the Market Place are \$1.00 for 25 words. Additional words are 5¢ each. Camera ready display Ads pertaining primarily to the Elizabethan era will be accepted at the following rates: 1/8th page \$5.00; 1/4th page \$8.00; 1/2 page \$15.00 and a full page at \$30.00. 25% discount for four consecutive insertions of the same Ad. Full payment must accompany Ad. Payment in Canadian funds or if U. S. funds at 85% to Elizabethan II Study Group. Mail to Editor: John D. Arn, N. 17708 Saddle Hill Rd., Colbert, WA 99005.

=====

WANTED : QUEEN ELIZABETH ISSUES - KARSH, WILDING & CAMEO

S • DEFINITIVE ISSUES ONLY INCLUDING MEDIUM & HIGH VALUES EXCEPT
T ALSO WANTED ARE CORONATION (#330) & ROYAL VISIT'S (#S 374 & 386)
P • PROOFS, ESSAYS, SHEETS
S • ALL ERROR TYPES, TAGGING, ETC.

C • ALL RATES BOTH FOREIGN & DOMESTIC
V • DIRECTIONAL , CRASH, ETC.
R • FREE FRANK & HAND STAMPS
S • ALL POSTAL STATIONERY - ESP. SPECIAL ORDER & ILLUSTRATED

C • 1955-62 BARREL CANCELS - ON OR OFF COVER - ALL DATES & TIME
A • 1953 CORONATION FLAG - ON COVER ONLY - ESPECIALLY TO FOREIGN DESTINATIONS
C • SUB-POST OFFICES ON OR OFF COVER
L • AMF CANCELS - ON OR OFF COVER
S • SON CANCELS - ANY TYPE OR PERIOD

PURCHASE OR TRADE ANY QUANTITY OF THE ABOVE

5/93

HARRY MACHUM, BOX 123, LITTLE CURRENT, ONTARIO, POP 1K0 CANADA

CANADIAN varieties approval service has openings for new customers. Request a selection for your inspection. **P. E. Stamps, Box 93, Stn. E, Toronto, Ontario, Canada M6H 4E1** 8 - 92

WANTED Scott #s 486 & 487 - expanding John McCrae to include Vimy Memorial. Need unusual usage; commercial covers prior to 1971. John D. Arn, N. 17708 Saddle Hill Rd., Colbert WA 99005 4 - 93

WANTED: **Caricature and Landscape** commercial covers used in period. All usage including low values paying domestic rate and all foreign destinations especially S. America, Asia and the Far East. Premium for unusual items. John D. Arn, N. 17708 Saddle Hill Rd., Colbert, WA 99005 4 - 93

WANTED: **"RED" Postage Dues on cover.** All series. Advise holding and requirements. Premium for high values. If possible enclose photocopy. All expenses reimbursed. John D. Arn, N. 17708 Saddle Hill Rd., Colbert, WA 99005

4 - 93