



**In This Issue**

*Picture Postage* . . . . . 49  
 BNAPS Resignations . . . . . 49  
 Year of the Monkey . . . . . 49  
 Canada Post News . . . . . 50  
 Study Group Business . . . . . 51  
 Editor's Desk . . . . . 51  
 2003 Stamp Program . . . . . 52  
 2004 Stamp Program . . . . . 52  
 Date-Coded Envelopes . . . . . 53  
 Cameo Cello paqs . . . . . 54  
 Market Place . . . . . 54  
 ORAPEX Envelopes . . . . . 55  
 Landscape Panes . . . . . 58  
 Rate Covers . . . . . 60  
 Rate Book . . . . . 60  
 Elizabethan EKV's . . . . . 61  
 2004 Rate Change . . . . . 62  
 La Mauricie Perfin . . . . . 64  
 \$5 Moose . . . . . 64

This month's...  
*Plate varieties* . . . . . 59

Copies Mailed: 119

**Canada-Alaska Picture Postage**

In our last issue of *Corgi Times* we gave details on the two surprise Canada-Alaska *Picture Postage* stamps issued during the summer of 2003.

The *Scott Monthly* newspaper reported that these were issued July 19, 2003.

However, thanks to Pascal LeBlond of the Canadian Postal Archives, we can pass along an issue date of **July 15, 2003** for these stamps. This is based on information found directly from Canada Post's on-line shop, as noted here:

Product Details: July 15, 2003 - This summer a special edition of Picture Postage was sold as a test to passengers on select cruise lines visiting Alaska. When cruise guests purchased a special edition stamp sheet, their picture was printed directly on the sheet within the stamp frames. Limited quantities of these sheets, which include 10 valid Canadian postage stamp frames and 3 memento frames, are now available to purchase online. (Note: stamps not included in the Collector's Pack). ♣

**BNAPS Resignations**

Two people on the BNAPS upper hierarchy have resigned in the past couple of weeks.

Jerome C. Jarnick, Chairman of the Publications Committee and Editor of the Policy and Procedures Manual, resigned as of Jan 15/04.

Tracy Cooper, Vice President of Regional Groups, resigned as of Jan 28/04.

Both will be sorely missed as they have given a lot of their time to the betterment of BNAPS. ♣

**Year of the Monkey**

The January 8/04 issue of the *National Post* newspaper ran an interesting article about the illustrator of this year's Year of the Monkey stamp.

The stamps were illustrated by renowned artist and caricaturist Anita Kunz, 47, whose work has been featured on the covers of countless magazines including *Rolling Stone* and *The New Yorker*. The designs interpret scenes from *Hsi Yu Chi (Journey to the West)*, one of four classical Chinese novels dating back centuries, in which priest Xuan Zang and his monkey disciple travel from China to India in the seventh century, seeking Buddhist scriptures. The 20-year odyssey is a beloved Chinese tale.

Kunz said the stamp design was revised for almost a year after designer Louis Fishauf first submitted his proposals for the subject.

Before the illustrations were finally approved, Kunz had to add shoes to the monkey's feet and change the design of his crown and sword to fit a Chinese focus group's specific instructions.

"A lot of it was so subjective because it really is an imaginary character," she said.

The domestic rate (49¢) stamp illustrates the first part of the Monkey King legend — the Monkey's struggle with the Jade Emperor in Heaven.

Kunz says she was excited to draw Canada Post's new stamps honouring the Year of the Monkey because she was born under the lunar sign. ♣



\$5 Moose definitive  
See page 64

## Who are We?

We are the Elizabethan II Study Group under the auspices of the British North America Philatelic Society (BNAPS) — *The Society for Canadian Philately*.

Our journal, the *Corgi Times* is published 6 times a year.

With the exception of the 1967–73 *Centennial Definitives*, we study all aspects of Canadian philately during the Elizabethan era.

---

## BNAPS

Website: [www.bnaps.org](http://www.bnaps.org)

Membership information:

Peter Jacobi, Secretary  
#6 - 2168 -150 A St.  
Surrey, BC V4A 9W4  
Canada  
E-mail: [pjacobi@shaw.ca](mailto:pjacobi@shaw.ca)

---

## Elizabethan II Study Group

Chairman

Harry C. Machum  
Box 123  
Little Current, ON P0P 1K0  
Canada

Treasurer

Ronald Rush  
30 Forest Hill Cres  
Fonthill, ON L0S 1E1  
Canada

*Corgi Times* Index . Robert McGuinness

Market Report . . . . . *vacant*

Paper Trails . . . . . Rick Penko

Auction . . . joint with Centennial group

Website:  
[www.adminware.ca/esg](http://www.adminware.ca/esg)

Annual Dues

US and Canadian addresses is US\$11.00. Canadian addresses option of C\$15.00. All others US\$16.00.

Please make cheques payable to "The Elizabethan II Study Group" and send to Robin Harris, Editor at the address listed to the right.

Articles with *no* by-line are written or compiled by the Editor. All articles are ©2004 by the author and/or the Elizabethan Study Group.

---

## Canada Post News

Do we like more stamps being issued by Canada? Sure we do! Every new issue is a part of the Elizabethan era — right up our alley. Here is what Canada Post is up to these days...

### ™ Tourist Attractions: 2004 style

I visited our one-and-only "philatelic counter" here in Winnipeg on the day of issue of the 49¢ Quebec Winter Carnival/Tourist Attraction issue — January 29th.



The 'head' philatelic clerk said the stamp was not available for sale as "it has been delayed until February 7th because people in Quebec didn't want it released until the start of the Carnival". I put a call into the National Philatelic Centre where they had heard nothing about this delay and said that the stamp *was* released as scheduled. It turns out that only post offices in Quebec received their usual shipment — all other post offices had to *special order* this stamp!

This is the fourth year of the Tourist Attractions series. The number of subjects has been reduced from ten to five, in order to feature each location a bit more prominently. In addition, the five stamps will be released separately at the domestic rate instead of the USA and International rates.

The other stamps in this series, to be released throughout the year, include: the international swimming marathon La Traversée Internationale du Lac St-Jean, the Montréal International Jazz Festival, the Canadian National Exhibition in Toronto, and St. Joseph's Oratory in Montréal. All are celebrating memorable anniversaries this year.

### ™ Year of the Monkey

This year's Lunar New Year stamp, featuring the Year of the Monkey, has a full complement of stamps and related products. A domestic rate (49¢) single stamp, international-rate (\$1.40) souvenir sheet, overprinted souvenir sheet, press sheet, two non-denominated postal cards, playing cards, and a stamp and coin set are available.



One of the local post offices here in Winnipeg said today (Feb 1/04) that they were not even able to order any as they had already been sold out! ♣

---

## Corgi Times

Editor:

Robin Harris  
770 Inkster Blvd.  
Winnipeg, MB R2W 0L5  
Canada  
E-mail: [corgi@adminware.ca](mailto:corgi@adminware.ca)  
Phone: (204) 586-3226

Back Issues:

Sample or single issues C\$3.50, US\$3.00 each.

(Six issues per volume) Vol I through V C\$17/vol, US\$13/vol; Vol VI C\$21, US\$16; Vol VII C\$18.50, US\$14; Vol VIII to XII C\$20/vol, US\$15/vol

*Corgi Times* is produced with WordPerfect® for Windows. Manuscripts should be submitted to the Editor at the address above. Electronic format is preferred but not required. Scanned illustrations (300dpi, colour, actual size, JPEG or TIFF, black background), if available, should be sent as separate files from text files.

## Study Group Business

### ™New members

### ™Donations received

*nothing new to report this issue*

## Planning Calendar

This is a listing of major exhibitions and bourses with a large content of both Canadian Exhibits and Canadian dealers. Minimum listing criteria: two day event; 1000 page exhibition; 18 dealer bourse with 50% offering Canadian material.

The goal is to list events far in advance to encourage either exhibiting or attendance and preferably both.

### 2004

May 1–2: **ORAPEX 2004**. Ottawa's 43rd National Stamp Exhibition. Ottawa, ON

Sep 3–5: **BNAPEX 2004**. Marriott's Hunt Valley Inn, Hunt Valley, MD, in conjunction with **BALPEX**, an American Philatelic Society World Series of Philately show. Website: [www.balpex.org](http://www.balpex.org)

## Editor's Desk

### ™Articles Needed!

Our *regular* appeal for **articles** from **our** membership in the last issue of *Corgi Times* resulted in a total of **ZERO** articles coming forward. I trust that *you* are just as disappointed as I am at this “almost expected” result.

Unfortunately this was the same result as last year's appeal.

Our journal is used to spread the word about Canada's Elizabethan II era of stamps. Who better to talk about this area of stamp collecting than every one of our members. Surely each one of us has something of interest — either just a paragraph or a couple of pages long — that could be shared with the rest of our membership?

I note that in the recently received January–March 2004 *BNAPortaitS* that Doug Lingard (Vice President – Study Groups), in his annual report presented at **BNAPEX 03** in London last September, noted the following:

*Just about all of the study group editors are having a hard time obtaining articles and even questions from their members. If you belong to a study group, I encourage you to submit an article, or even a question to your editor. If you have something published in your newsletter, you may be surprised at the feedback and input you receive from other members of your study group who collect similar material.*

A special thanks to Leopold Beaudet for answering my request at the last minute with a two-page follow-up to the Caricature and Landscape pane types (see page 58).

### ™Winterpeg Weather

As I write this (the last week of January), the Canadian prairies are experiencing a particularly cold winter. Temperatures in Saskatchewan and here in Manitoba have hit *minus* 40C (that is equivalent to -40F for our American members) for the past couple of days. With the wind chill, we have been as low as -54C — extremely chilly to say the least. [In Winnipeg, this is only the third time in the past 25 years that we have reached -40].

However, just to show how hardy we Winnipeg-ers are, the local stamp store near my home had their **busiest** day of the year yesterday — when the temperature was at it lowest level this winter. More customers were visiting their shop and buying stamps than at any other time this past year! Either we Winnipeg-ers are crazy people or *stamp collectors* are crazy people — now to decide which (or does that make stamp collectors in Winterpeg *doubly* crazy?). ♣

## Canada Post 2003 Stamp Program (partial)

Issue dates are subject to change by Canada Post. Shaded entries are changed/new from the last time we presented this list.

Scott numbers as of *January 2004 Scott Stamp Monthly*

Issued	Description	Scott#
Jul 11	48¢ Flag over Canada Post Building with "Vancouver/2010" inscription [available in booklet of 30 from local post offices; booklet of 10 only from Canada Post Philatelic Centre in Antigonish, NS]	1991
Jul 15 [date change]	(\$1.25) <i>Canadian Picture Postage</i> : Canada-Alaska cruise line (non-denominated for international mailings) in self-adhesive panes of 10 — <b>2 designs</b>	1991C–D
Jul 21	48¢ The Lutheran World Federation Tenth Assembly	1992
Jul 25	48¢ Korean War, 1950–1953	1993
Jul 29 (?)	(\$1.49) Anne of Green Gables postal card (non-denominated)	
Sep 4	48¢ University of Montréal (125th anniversary) - booklet of 8 [two different barcodes on covers]	1977
Sep 8	48¢ National Library — Authors (block of 4 in booklet of 8) [two different barcodes on covers]	1994–97
Sep 10	48¢ World Road Cycling Championships (booklet of 8) [two different barcodes on covers]	1998
Sep 10	(\$1.49) Cycling postal card (non-denominated)	
Oct 1	48¢ Canadian Astronauts (set of 8 stamps)	1999
Oct 4	48¢ National Trees (joint issue with Thailand Post) < 2x48¢ (pane of 16) < 2x48¢ in souvenir sheet	2000–01
Oct 7	48¢ Jean-Paul Riopelle (Art) < 6x48¢ < \$1.25 souvenir sheet	2002a–f 2003
Nov 4	Christmas — Holiday Gift Items < 48¢ Skates (self-adhesive booklet of 12) < 65¢ Teddy bear (self-adhesive booklet of 6) < \$1.25 Wooden duck toy (self-adhesive booklet of 6)	2004 2005 2006
Dec 19	Rate-change definitives < 49¢ Queen Elizabeth II (vertical self-adhesive in booklet panel of 10) < 49¢ Flag over Edmonton Skyline (horizontal self-adhesive booklet panel of 10) < 49¢ Stylized Maple Leaf (self-adhesive coil of 100) < 80¢ Red Maple Leaf on Stem (self-adhesive coil of 50 and booklet panel of 6) < \$1.40 Green Maple Leaf on Stem (self-adhesive coil of 50 and booklet panel of 6) < \$5 Moose (pane of 4)	

## Canada Post 2004 Stamp Program (partial)

Issue dates are subject to change by Canada Post. Shaded entries are changed/new from the last time we presented this list.

Issued	Description	Scott#
Jan 8	Year of the Monkey < 49¢ single < \$1.40 souvenir sheet < \$1.40 <i>overprinted</i> souvenir sheet < two (\$1.49) postal card (non-denominated) — one for each postage stamp design	Also: uncut press sheet and playing cards
Jan 24	49¢ National Hockey League All-Stars (5th set in a series) < pane of 6 (6 designs: Larry Robinson, Marcel Dionne, Ted Lindsay, Johnny Bower, Brad Park, Milt Schmidt) < booklet pane of 6 (self-adhesive)	
Jan 29	49¢ Tourist Attraction: Quebec Winter Carnival (self-adhesive, booklet of 6)	

## Canadian Date-Coded Envelopes

by: William R. Geijsbeek

Canada Post has supplied the following production quantities for date-coded Birds and Tulips envelopes. The Birds envelopes were issued February 15, 2002 in two sizes (#8 – American Goldfinch and #10 – Scarlet Tanager) for the new 48¢ rate. They were not denominated but rather carried the service designation “DOMESTIC LETTERMAIL”. Production quantities are in thousands (000).

Bird Printings	Date Code	size 8	size 10
*1	undated	*850	*3625
2	2002-02-25	700	500
3	2002-04-04	550	900
*4	April 2002	*1000	*2300
*5	2002-11-02	*600	*3100
*6	2003.02.03	*2775	*3102
*7	2003-11-17	none	*3101
	Total to date	6475	16628



American Goldfinch Size #8 envelope

The Tulip envelopes were issued May 6, 2003<sup>1</sup> in two sizes (#8 – The Bishop Tulip and #10 – Ottawa Tulip). They were not denominated but rather carried the service designation “DOMESTIC LETTERMAIL”. Production quantities are in thousands (000).

Tulip Printings	Date Code	size 8	size 10
*1	2003-04-04	*800	*3100
*2	2003-11-17	*270	none
	Total to date	1070	3100



The Bishop Tulip Size #8 envelope

Note that I have not seen the 2003-11-17 printings and thus do not know whether the numbers are separated by periods or by dashes.

Apparently Canada Post considers the Bird envelopes and the Tulip envelopes as parallel issues. Because these envelopes are service rated rather than denominated, their use will continue into the future until Canada Post decides to replace them with another issue.

Canada Post carries four different envelope items in its stock — #8 envelopes in packs of 10, #8 envelopes in boxes of 500, #10 envelopes in packs of 10, and #10 envelopes in boxes of 500. When stock of any of these four items gets low, a new printing is triggered. The date codes are used as a quality control measure. Each code represents a different printing of envelopes. Thus, in case a batch of envelopes turns out to be faulty, it can be isolated from other printings of the same envelope.

All of the printings preceded by an asterisk produced both single envelopes (packed in boxes) and packets of 10 envelopes. I have breakdown production data for both and will be happy to provide them upon request.

Canada Post has provided no breakdown data for the second and third Bird printings, but both sizes of envelopes of both printings were available in packs of 10. ♣

<sup>1</sup> The product announcement for this issue, on page 28 of the Canada Post April to June 2003 *details* magazine, suggests a May 2, 2003 issue date. All of the Product Listing Guide spreadsheets in the *details* magazine however, give the May 6, 2003 date.



## Cameo Cello paqs

by: Robin Harris

I received an e-mail from a non-ESG member (Ken Bailey) back at the end of December which read as follows:

I have a 5-cent cameo miniature pane still in the cello paq I'm trying to find out about. Instead of the usual cameo mini pane cello paq label that says "for pocket or purse" and  $20 \times 5 = \$1.00$ , this one has a Centennial maple leaf symbol with 1867 on one side of the stem, 1967 on the other, with the  $20 \times 5 = \$1.00$  below. I can find no reference to this cello pak design in Unitrade or in your Karsh/Wildling/Cameo reference book.

What can you tell me about this item? Is there a premium on its value over the usual Cameo mini pane value?

For the record, I picked these up from a dealer who's had them in his cello paq stock for many years, essentially since they came out. The dealer is/was not under the assumption that these were unique in any way, and as such nor was I until I got them home and could find no reference to them in your books or any others. I have four copies of the 5-cent, and three copies of the 4-cent. There's nothing to suggest they're fake.

Has anyone in our membership seen or heard of these items?

Leopold Beaudet notes the following:

Obvious explanations for their existence:

1. Canadian Bank Note Co. printed cello paq wrappers with the Centennial logo while the Cameo issue was still current, and used these wrappers for late printings of the Cameo cello pak stamps.
2. CBN had an inventory of 4c and 5c Cameo cello paq stamps after the Centennial stamps were issued, and decided to use up the inventory rather than destroy it.

It is always surprising to hear of new finds so many years after an issue has come and 'gone'. ♣

## Elizabethan II Market Place

Classified listings in the Market Place are \$1.00 for 25 words. Additional words are 5¢ each. Camera ready display ads (preferably 300dpi, black and white TIFF scans) pertaining primarily to the Elizabethan era will be accepted at the following rates: 1/8 page \$5.00; 1/4 page \$8.00; 1/2 page \$15.00 and a full page at \$30.00. 25% discount for four consecutive insertions of the same ad. Full payment must accompany ad. Payment in Canadian funds to: Elizabethan II Study Group. Mail to Editor: Robin Harris, 770 Inkster Blvd, Winnipeg, MB R2W 0L5, Canada. ♣



4-cent and 5-cent Cameo miniature panes with Centennial-era cello-paq wrappers

# Special Postal Envelopes Issued By The RA Club in Ottawa For ORAPEX

by: Joseph Monteiro

## Introduction

Special postal envelopes are pre-printed stamped envelopes which have a private impression applied to the envelope. The impression other than the stamp is usually a name or address or symbol of a business or individual and sometimes depicts a picture of a commemorative event. Two different procedures formerly existed for obtaining these envelopes. In one case, the printer manufactured the envelopes and printed the stamps and private impression on the envelopes. In the other case, the customer supplied the envelopes and the printer printed the stamps and the private impression on the envelopes. The current procedure at the moment is the first. However, a certain minimum number of envelopes have to be printed before the Canadian Post Office will print special postal stationery.

The private parties that have engaged in this activity on a regular basis are: a) The RA Stamp Club; b) The Edmonton Stamp Club; and c) Other Private Parties. In this brief article, the special postal stationery that has been issued by RA Stamp Club in Ottawa shall be reviewed.

## Special Postal Stationery

The practice of producing special postal stationery by the RA Stamp Club for Orapex began in 1991. Initially, until the early 1990s, special postal envelopes were provided at no cost to the RA Stamp Club. The special postal envelopes usually contain a small picture of the person honoured on the left of the envelope. A short history of the person honoured is often provided in the brochure printed for this particular occasion held in early May. A list of the various special postal envelopes that have been printed are shown in the table hereafter. It should be noted that the practice of issuing envelopes existed long before 1991 as early as 1983, however, these envelopes cannot be classified as special postal stationery according to the above normally accepted definition.

## Special Postal Cancellations

The special postal stationery is available either mint or with a special cancellation or cancellations produced for the special occasion. Usually a special cancellation is used and in the last few years different cancellations on two separate covers are used. These cancellations are usually quite attractive. Sometimes as many as four cancellations existed and combinations and permutations of these cancellations exist. It should be noted that when the cancellation or cancellations are shown at the side of both size envelopes in the table, the cancellations are used on both sized envelopes.

## Concluding Remarks

Special postal envelopes are now an accepted philatelic item that are listed under postal stationery in specialized catalogues on the subject. These listings concentrate on mint envelopes and not on cancellations used on the envelopes. As a result, they fail to catalogue the varieties of envelopes that exist with different cancellations. This article attempts to fill in that void. It should be noted that only the main cancellations used are indicated and combinations are not indicated as they are not recorded. More research is being undertaken to obtain as complete a listing as possible.

## Bibliography

1. Earle L. Covert and William C. Walton, Webb's Postal Stationery Catalogue of Canada and Newfoundland, 7th edition, 2001.
2. Joseph Monteiro, Definitive Postage Stamps of Canada (1953-2004), Volume V, 2004.

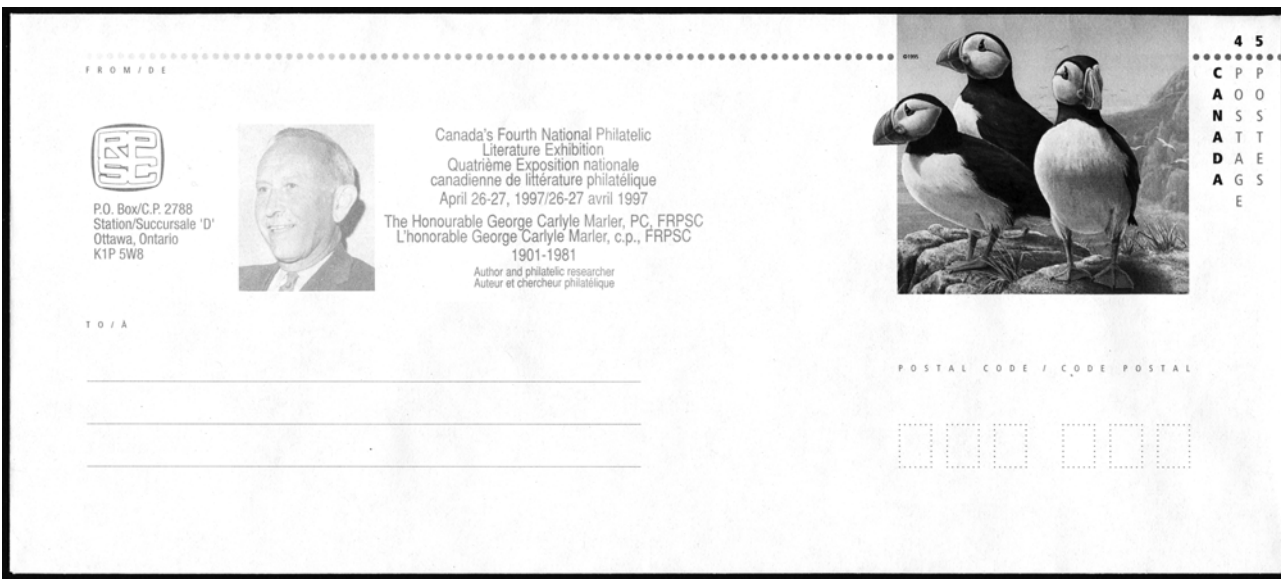
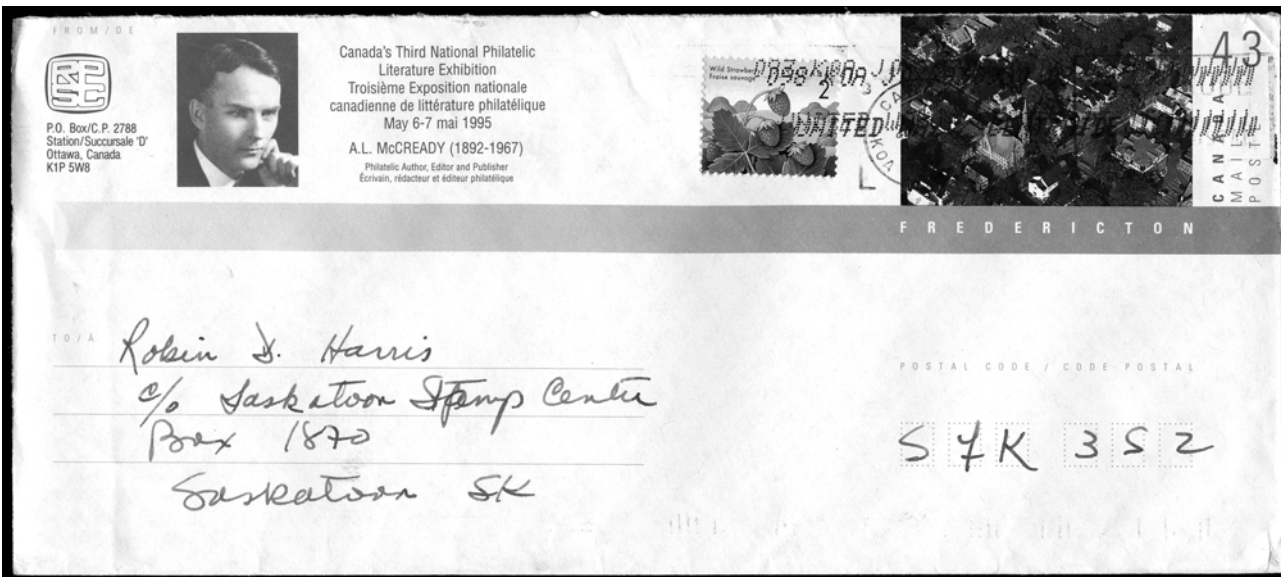
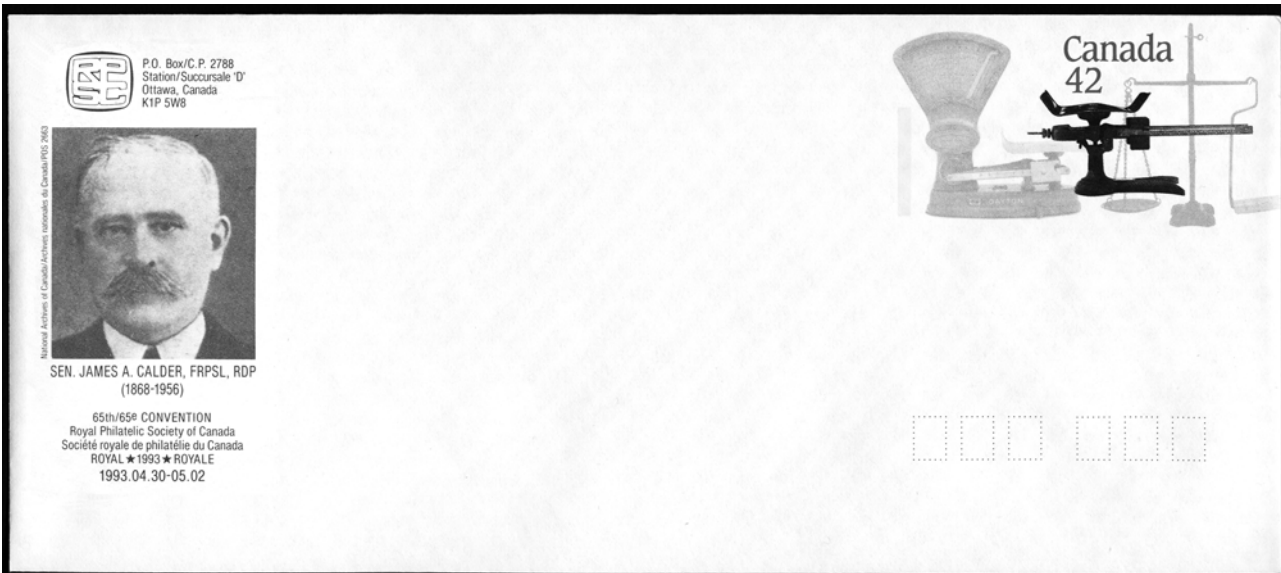
TABLE 1- Special Postal Stationery by the RA Stamp Club

Value and Description	Size 8 (Stamp Design)	Size 10 (Stamp Design)	Cancellation
1. 40¢ --Hooper for Orapex 1991 The World Philatelic Youth Exhibition Special Postal Envelopes	New Brunswick		1. ORAPEX 91 91-05-03
2. 40¢ -- Sen. J. A. Calder for Orapex 1992 Postal Scales Special Postal Envelopes	Quadrant Scales	Crowfoot Beam Scales	1. ORAPEX 92 92.05.02 2. ORAPEX 92 92-05-03

Value and Description	Size 8 (Stamp Design)	Size 10 (Stamp Design)	Cancellation
3. 42¢ – A. L. McCready for 2nd CNPLE Postal Scales Special Postal Envelopes	Quadrant Scales	Crowfoot Beam Scales*	1. CNPLE 1993.5.02. 2. With four cancellations
4. 43¢ – Nicholas C. Sparks for Orapex 1994 Cities Special Postal Envelopes	Regina	Halifax	1. ORAPEX 94 94.05.07 2. ORAPEX 94 94.05.08
5. 43c. – A. L. McCready for 3th CNPLE Birds of Canada Postal Envelopes		Fredericton	1. ORAPEX 95 95.05.07 2. With four cancellations
6. 43¢ – Sir Sanford Flemming for Orapex 1995 Cities Special Postal Envelopes	St. John's		1. ORAPEX 95 95.05.06 2. ORAPEX 95 95.05.07 3. 3rd National Exhibition of Philatelic Literature 6-V-1995
7. 43¢ – Sir Sanford Flemming for Orapex 1995 Cities Special Postal Envelopes		Fredericton	1. ORAPEX 95 95.05.07
8. 45c. – Frederick Jarrett for Orapex 1996 Birds of Canada Postal Envelopes	Pileated Woodpecker		1. ORAPEX 96 96.05.04 2. Two other cancellations
9. 45c. – George Carlyle Marler for 4th CNPLE Birds of Canada Postal Envelopes		Puffin	1. ORAPEX '97 1997-04-26 2. 4th National Exhibition of Philatelic Literature
10. 45c. – Rev. E. Alfred Butler for Orapex 1997 Birds of Canada Postal Envelopes	Grebe	Blue Bird	1. ORAPEX '97 1997-04-26 2. ORAPEX '97 1997-04-27
11. 45c. – Sir William Mulock for Orapex 1998 Birds of Canada Postal Envelopes	Finch	Owl	1. ORAPEX '98 1998.04.25 2. ORAPEX '98 1998.04.26
12. 46c. – Collin H. Bayley for Orapex 1999 Birds of Canada Postal Envelopes	Hairy Woodpecker		1. ORAPEX '99 1999.04.24 2. ORAPEX '99 1999.04.25
13. 46c. – Henry Heckler for Orapex 2000 Birds of Canada Postal Envelopes	Warbler	Blue Jay	1. ORAPEX 2000 2000-05-06 2. ORAPEX 2003 2000.05.06-07
14. 47c. – Major E.R. Toop for Orapex 2001 Birds of Canada Postal Envelopes	Lapland Longspur	Golden Eagle	1. ORAPEX 2001 2002.05.05 2. ORAPEX 2001 2003.05.06
15. ND – Ralph D. Mitchener for Orapex 2002 Birds of Canada Postal Envelopes	American Goldfinch	Scarlet Tanager	1. ORAPEX 2002 2002.05.04 2. ORAPEX 2002 2002.05.05
16. ND – Raymond A. Jamieson Q.C. for Orapex 2003 Birds of Canada Postal Envelopes	American Goldfinch	Scarlet Tanager	1. ORAPEX 2003 2003.05.03 2. ORAPEX 2003 2003.05.04



Illustration of a Few Special Postal Envelopes



## Another Pane Type for the 50¢ Landscape Definitive

by: Leopold Beaudet

The previous issue of **Corgi Times** described the “pane types” for the 1972-1978 Caricature and Landscape definitives [1], where the distinguishing characteristics of a pane type were the size and layout of the pane, the position of the inscriptions, and the perforation hole arrangement in the pane margins. The article identified two pane types for the medium value Landscape definitives. There is a third type that was described almost 20 years ago [2].

The 10¢ to 50¢ Landscape definitives were issued simultaneously on 8 September 1972. They were printed by British American Bank Note Co. (BABN) using a combination of photogravure and engraving on a web-fed Goebel press. The stamps were perforated 12.5 by 12.0 by a drum perforator that is integral to the Goebel press. The pin arrangement on the drum was such that there was just one hole in the top and bottom pane selvedge (which actually formed the sides of the web of paper). This is pane type 1.

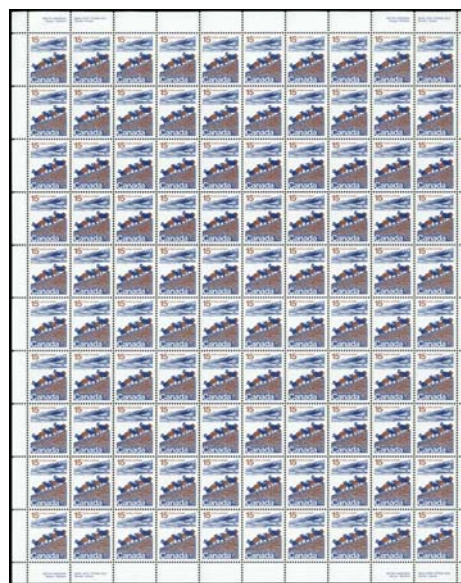
On a set of new printings from new engraved cylinders issued sporadically during 1976, the perforation gauge was changed to 13.3 by 13.3, and the top and bottom selvedge was fully perforated. This is pane type 2.

In July or August 1977, BABN reprinted the \$1.00 Vancouver definitive from cylinder 2 using the 13.3 by 13.3 perforation gauge. The pin arrangement on the drum was similar to that of the medium value definitives except that alternate columns of pins were removed because of the larger size of the \$1.00 definitive, and there was just one pin in the top and bottom pane margin. The 10¢ to 25¢ Landscape definitives were replaced by the Tree Leaf definitives on 8 August 1977, but the 50¢ Seashore was not replaced until 6 July 1978 by the Prairie Street Scene definitive. The 50¢ obviously underwent one or more printings after the 10¢ to 25¢ values were replaced because in May 1978 it was found with a new perforation hole arrangement. The gauge was the same, 13.3 by 13.3, but there was just one hole in the top and bottom selvedge like the \$1.00. This is pane type 3.

This pane type is important because it pinpoints a distinctive new printing of the 50¢ Seashore. The pane type was not sold by the Philatelic Bureau, and hence exists only in field stock without inscriptions. All post office stock from May 1978 onwards was on this pane type. Incidentally, the block illustrated in this article was purchased at a post office in December 1978.



Landscape pane  
Perf 12.5 x 12.0



Landscape pane  
Perf 13.3 x 13.3



50¢ Seashore  
Perf 13.3 x 13.3; Field stock: one hole in top and bottom selvedge

If there were new printings, were there also new cylinders? The 50¢ Seashore has two constant cylinder flaws that shed some light on this question. The design cylinders for the medium value Landscape definitives had 300 stamp impressions, three panes of 100, laid out around their circumference. Because of the way the web is cut and stacked into panes, a flaw that is constant on one stamp on the cylinder occurs on every third pane in a post office pad.

The 50¢ Seashore was printed from two photogravure cylinders, buff and blue, and one engraved cylinder, green (plus another photogravure cylinder for the tagging). BABN first printed the stamp with migrating OP-4 tagging, but quickly switched to OP-2 tagging. In August 1974, almost two years after the date of issue, a new “improved” printing appeared in which the blue colour was considerably strengthened and changed in shade. The tagging was also widened from 3 to 4 mm. The perforation was the original 12.5 by 12.0, and according to the inscription on the cylinder blocks the green cylinder was still No. 1. The Philatelic Bureau was apparently caught unaware by this printing because it wasn’t until six months later in February 1975 [3] that the Bureau began selling cylinder blocks. The perf 13.3 by 13.3 printing from green cylinder No. 2 was issued in January 1976, and the late printing with the revised perforation pin arrangement appeared in May 1978. Thus, the 50¢ Seashore can boast of at least five distinguishable printings.

Both flaws on this stamp occur on the blue photogravure cylinder, and both are listed in the Robin Harris Caricature and Landscape definitives catalogue [4]. They are found on the “improved” cylinder No. 1 printing and both perf 13.3 by 13.3 printings. It certainly seems that the same blue cylinder was used for all but the two original printings. The flaws are found on stamps 1/9 (that is, row 1, column 9) and 1/10 of the same pane. The Thirkell position is given in brackets after the description of the flaw.

- 1/9 Small dot at about 2 o’clock in the loop of the “5” of “50”. It is very close to the number (A6). This dot is not always visible.
- 1/10 a) 10 mm horizontal scratch in the sky just above the central bluff. It extends from a point below the “o” of “postes” to the bottom of the “5” of “50” (border of A2, A3, A4, A5 and B2, B3, B4, B5). The scratch is light especially on the perf 12.5 by 12.0 printing.  
b) Dot in the sky between the scratch and the “t” of “postes” (bottom half of A3).



Pos 1/9



Pos 1/10

Constant cylinder flaws on the 50c Seashore, stamps 1/9 and 1/10 (4x magnification). The flaws are computer enhanced.

## References

1. Robin Harris, “1972 - 1978 Caricature and Landscape Pane Types”, **Corgi Times**, Vol.12, No. 3, Nov.-Dec. 2003, pp. 44-47.
2. Leopold Beudet, “Canadian Stamp Varieties - 12”, **Canadian Philatelist**, Vol. 35, No. 6, Nov.-Dec. 1984, pp. 424-435.
3. R. K. Malott, Letter to the editor, **Maple Leaves**, Vol. 15, No. 10, Aug. 1975, p. 295.
4. D. Robin Harris, **Caricature & Landscape Definitive Series 1972 - 1978**, first printing, April 1997. ♣

## Articles Needed!

*Please pass along any questions/answers/concerns/comments, new finds, or articles relating to the Canadian Elizabethan-era stamps. We will make sure it gets published.*



## Rate Covers

by: John Aitken

### Forces Air Letter, Special Delivery

I recently obtained a very unusual cover. It is a Forces Air Letter sent from CFPO 105 in Germany to a CIBC branch in Burnaby BC. What makes it unusual is that it was sent special delivery.

The 48¢ rate is composed of 2 parts: 40¢ special delivery (same as the domestic rate and for the same time period, i.e. June 1/67 to Aug 1/76) and 8¢ for the Forces Air Letter, which was in effect Jan 1/72 - Aug 31/76. The Forces air letter was a special concession begun December 1951 and the forms were available free in post offices for the asking. They could be used by military personnel and people working with them e.g. teachers or by the public in Canada writing to members of the armed forces or people working with them. The Forces Air letter rate was less than either the airmail letter rate or the aerogramme rate. From April 1, 1954 it was the same as the domestic forward letter rate (first ounce).

The other thing I found interesting is the postage. There is a tagged 8¢ Centennial and a pair of 20¢ Landscapes. The 20¢ stamps have 4mm "general tag" bars. The cover was sent April 3, 1974. I wondered if this might be a new early date? It would be nice to see a list of early dates for these stamps in the newsletter (see page 61 of this issue).



Forces Air Letter — Special Delivery

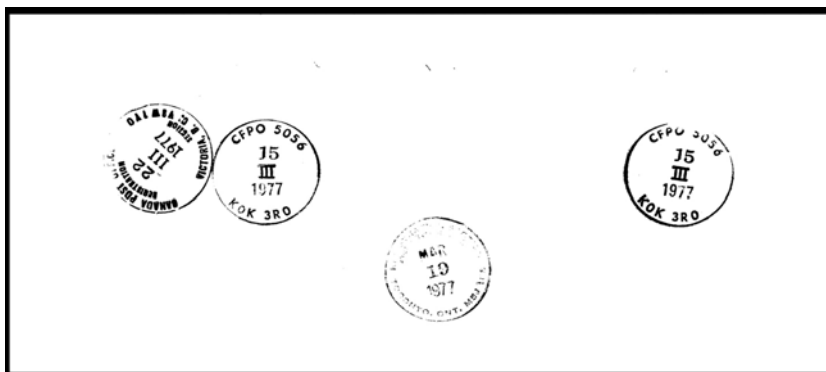
### Special Delivery, Registered Airmail

The express, registered airmail is also uncommon, and the \$1.60 rate was only in effect for 3 months (January 1/77 to March 31/77). It is also an oddball, because of the combination of domestic fees for special delivery and registration combined with the (foreign) airmail. As of January 1/77 the airmail rate went up to 25¢ for the first oz. but the other two rates were not immediately changed. The registered rate went to \$1 April 1/77, but it would be another year before the special delivery (and the airmail and registered rates) were changed again.

There is an even shorter domestic registered / special delivery rate for the month of March 1977, when the letter rate had increased from 10¢ to 12¢ March 1, but the registered rate did not go from 75¢ to \$1 until April 1/77 and the special delivery remained at 60¢ (total \$1.47 or more). [ed: a cover showing this usage was illustrated in the Jul-Aug 2000 *Corgi Times*, page 19] ♣



Special Delivery, Registered Airmail



reverse side of above cover

## Elizabethan Rate Book

The *Canada Postal Prices of the Elizabethan Era 1952 to 2002* by Andrew Chung, Harry Machum, and Hank Narbonne, OTB is *still* being proofed. The 'missing' chapter has been included and cover illustrations have been scanned and inserted. We will keep you posted on this, the most important book that you will add to your library this year. ♣

# Elizabethan-Era EKU's

by: Robin Harris

From time to time stamps are released that do not have an official first day of issue. In fact, in some cases, a new printing may appear that is never recognized as existing by the post office! Collectors, however, like to know when a new printing is released. For those stamps that do not have an official first day of issue, an *earliest known use* (EKU) is required.

The following are lists of some of those stamps in modern Canadian definitives that did not have an official first day of issue — and the EKU's I have seen reported over the years. Can you supply a new EKU?

Caricature and Landscape Definitives				
Stamp	Printer		Issued?	EKU
7¢ St. Laurent	CBN	plate 2	Jan 1977	
8¢ QE II	BABN CBN	pl 6, 13 x 13½ pl 7 or 8	Nov 1976 Dec 1976	
10¢ Forest	BABN	pl 2, 12½ x 12, Type II pl 3, 13½	mid Jun 1974 Sep 1975	Jul 13, 1974 Sep 13, 1975
15¢ Sheep	BABN	12½ x 12, Type II pl 2, 13½	Jun 1975 Jan 1976	Jun 2, 1975 Jan 19, 1976
20¢ Prairie	BABN	12½ x 12, 4mm tag pl 3, 13½	Dec 1973 Jan 1976	Dec ?, 1973 Jan 30, 1976
25¢ Bears	BABN	12½ x 12, Type II pl 3, 13½	Dec 1974 Jan 1976	Dec 17, 1974 Jan 15, 1976
50¢ Seashore	BABN	12½ x 12, Type II pl 2, 13½	Mar 1974 Dec 1975	Mar 12, 1974 Dec ?, 1975
\$1 Vancouver	AP	13½	Jan 1977	Jan 19, 1977

Environment Definitives				
Stamp	Printer		Issued?	EKU
1¢ Bottle Gentian	BABN	3½mm tag	Feb 1982	
2¢ Western Columbine	BABN	3½mm tag	Jan 1982	
3¢ Canada Lily	CBN	precancel	Aug 1978	
	BABN	3½mm tag	Dec 1981	
4¢ Hepatica	BABN	3½mm tag	Jan 1982	
5¢ Shooting Star	CBN	precancel	May 1978	
	BABN	3½mm tag	Nov 1981	
10¢ Sparrow's Egg Lady's Slipper	CBN	precancel	Jul 1977	
		perf 13x13½	Sep 1978	Nov 15, 1978
	BABN	3½mm tag	May 1981	
12¢ Jewelweed	BABN	precancel	Sep 1978	
15¢ Canada Violet	BABN	3½mm tag	Jun 1981	
17¢ Queen Elizabeth II	BABN	3½mm tag	May 1981	
12¢ Parliament	CBN	plate 1 & 2	Mar 1978	
	CBN	precancel	May 1978	
5¢ Maple Leaf 10¢ Maple Leaf 30¢ Maple Leaf	BABN	coated paper	Aug 1982	
5¢ Maple Leaf 8¢ Maple Leaf 32¢ Maple Leaf	BABN	Harrison	Spring 1984	

Artifact and Parliament Definitives				
Stamp	Printer		Issued?	EKU
34¢ Parliament (booklet)	BABN	perf 13½ x 13	Aug 1, 1985	Jul 12, 1985
34¢ Parliament (booklet)	AP	13½ x 14	Jul 4, 1986	Jun 1986

Wildlife and Architecture Definitives				
Stamp	Printer	Perf, Paper	Issued?	EKU
1¢ Flying Squirrel	AP	13.1 x 12¾, Slater	late 1991	Jan 27, 1992
10¢ Skunk	AP	13.1 x 12¾, Slater	Feb 1991	Mar ?, 1991
44¢ Atlantic Walrus	AP	13¾ x 13.1, Slater	Nov 1989	
45¢ Pronghorn	AP	13.1, Slater	Apr 1990	Jun 20, 1990
59¢ Musk Ox	AP	14.4 x 13.8, Slater	fall 1989	
61¢ Timber Wolf	AP	13.1, Slater	Jun 1990	May 8, 1990
74¢ Wapiti	AP	12 x 12½, Rolland	late 1988	
76¢ Grizzly Bear	AP	13.1, Slater	Nov 1989	
78¢ Beluga	AP	13.1, Slater	Apr 1990	Apr 16, 1990
\$1 Library	CBN	13½, 3rd printing	Oct 1992	
39¢ QE II	BABN	13.1 x 12¾, Harrison	Apr 1990	Apr ?, 1990

Fruit and Flag Definitives				
Stamp	Printer	Perf, Paper	Issued?	EKU
52¢ Gravensten Apple	sheet booklet AP "	13.1, Coated "	Oct 1996 Oct 1996	
71¢ American Chestnut	AP	14.4 x 13.8, Coated	Dec 95	Jan 1996
90¢ Elberta Peach	sheet booklet AP "	14.4 x 13.8, Coated 13.1, Coated	Late 1995 Mid 1996	Dec 1995 Jun 27, 1996
50¢ Vending w/ 1¢ Flag 5¢ Flag 39¢ Flag	AP	12½ x 13	Mar 1990	
39¢ Flag Over Clouds	AP	12¾ x 13.1	Dec 1990	

The following stamps had "official first day of issues" but were actually available much sooner:

Stamp	Printer		Issued?	EKU
49¢ Delicious Apple sheet booklet	CBN "	13.1, Harrison "	Jan 7, 1994 Jan 7, 1994	Dec 1993 Dec 1993
86¢ Bartlett Pear sheet booklet	CBN "	13.1, Harrison "	Jan 7, 1994 Jan 7, 1994	Dec 1993 Dec 1993
43¢ Flag Over Field	LM	14.5 x 14.6	Jan 7, 1994	Dec 1993



## 2004 Rate-Change Definitives

by: Robin Harris

On January 12, 2004, postage rates in Canada increased. Nearly a month *prior* to this, the rate-change definitives were issued (December 19, 2003). The basic letter-rate increases were:

Domestic: 48¢ to 49¢  
USA: 65¢ to 80¢  
International: \$1.25 to \$1.40

Five new definitives were issued to meet these rates: 3 different 49¢ values, an 80¢ and a \$1.40 value. This is one *less* stamp than we have been accustomed to in previous rate changes. The second-step domestic rate increased from 77¢ to 80¢. This 80¢ rate is the same as the new USA rate so no additional stamp was needed.

### Domestic Rate

As noted, three different 49¢ domestic-rate, self-adhesive stamps were released:

- < 49¢ Queen Elizabeth II in a booklet panel of 10
- < 49¢ Flag over Edmonton in a booklet panel of 10
- < 49¢ Stylized Maple Leaf coil in rolls of 100

While standing in line at different postal outlets, I have overheard the postal clerks call this stamp, “the flag over sunset”, not knowing that the photograph is of Edmonton, the capital city of the province of Alberta.

The 49¢ Queen Elizabeth II stamp is based on a photograph taken by Canadian pop star Bryan Adams. This design is a change from the past several first-class rate stamps bearing the Queen’s image.

### USA/International Rate

The self-adhesive 80¢ and \$1.40 USA and International rate stamps, respectively, feature the maple leaf. The 80¢ value features a red maple leaf while the \$1.40 features a green maple leaf attached to a twig.

Both values were issued in booklet panels of 6 (straight die cut) and rolls of 50 (simulated perfs at the sides).

The 80¢ value will likely see heavy usage as it can be used singly or in various multiples to meet quite a few postal rates of various weights.

### Coil Gutters, etc.

The three new coil stamps have gutters at every 23 stamps. However, unlike the self-adhesive coils of recent years, there are no start or end strips featuring additional backing paper. The gutters appear at *random* locations throughout the roll, not at exactly the 23rd stamp from the start of the roll.

The coil stamps *touch* each other on the roll and the gutter does *not* have the ‘excess’ paper removed. These are two other changes from previous self-adhesive coils.

There are again coil display cards for each of the rolls. Of interest is the inclusion on the cards of the printer information and colour dots indicating the ink colours used to print the ... *display cards!* It is a nice surprise that these colour dots were included but *why* do they indicate the display card printing rather than the stamp printing?



49¢ Stylized Leaf  
Self-adhesive  
Coil, roll of 100



49¢ Flag over Edmonton  
Self-adhesive  
Booklet panel of 10



49¢ QEII  
Self-adhesive  
Booklet panel of 10



80¢ Maple Leaf  
Self-adhesive  
Booklet panel of 6



\$1.40 Maple Leaf  
Self-adhesive  
Booklet panel of 6



80¢ Maple Leaf  
Self-adhesive  
Coil, roll of 50



80¢ Maple Leaf  
Self-adhesive  
Coil, roll of 50



Coil display cards

Left: for 49¢ Maple Leaf (top colour is vermillion)  
 Middle: for 80¢ Leaf (top colour is yellow-orange)  
 Right: for \$1.40 Leaf (top colour is slate violet)



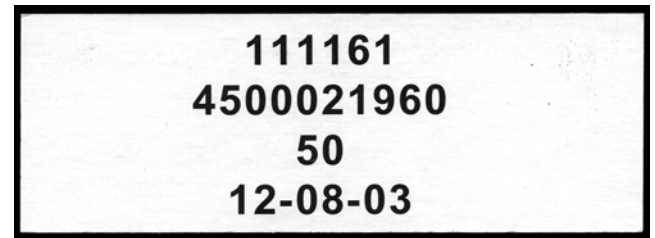
49¢ Queen Elizabeth II  
 Self-adhesive booklet panel of 10



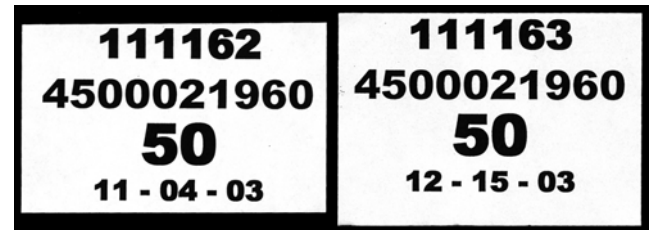
49¢ Flag over Edmonton  
 Self-adhesive booklet panel of 10



Coil gutter strips of 4



49¢ Flag over Edmonton  
 Packaging label with product number, purchase order number, quantity, and printing date



Left: 80¢ Maple Leaf booklet packaging label  
 Right: \$1.40 Maple Leaf booklet packaging label

## Booklet Packaging Labels

The Queen Elizabeth II booklet, which is printed by Canadian Bank Note, has *no* packaging label in or on the shrink-wrapped booklets of 50. On the other hand, the Flag over Edmonton and the 80¢ and \$1.40 Maple Leaf booklets, all printed by Ashton Potter, include information that we have become accustomed to seeing. The Maple Leaf labels are a slip of paper about 2¾ x 1¾ inches in size. The Flag “label” is actually a stiffening card the size of the full booklet panel.

Various printing dates have already been reported for each booklet — we will provide a ‘first draft’ list as more dates become reported to us. We have even heard of a UPC barcode being added to more recent Flag packaging labels!

## Other

As noted earlier and evident in the illustration above, the new self-adhesive coil stamps ‘touch’ each other rather than having a small gap between each other.

This ‘feature’ is causing some problems with postal clerks and the public. If you separate a single stamp from the roll, including its backing paper and *then* attempt to remove the stamp from the backing paper to apply the stamp to an envelope, you will have a rather difficult time doing so! ♣

# La Mauricie National Park Perfin

by: Robin Harris

A CNR perfin has been reported on the \$5 La Mauricie National Park stamp (CBN printing). This is the first perfin I have heard of on this particular stamp — perfins on any high value definitive are particularly scarce.

This was reported by non-ESG member Dave Peppar. He passed along the following:

*A little history of the stamp would be that I got it in 1988, probably at BCIT, a school in the Vancouver area — since that is where I worked at the time. It would have come into the mail room or my office. Like most collectors I save everything I receive and put them away in box's until the time I may be working on that area. There were many high values in the box but this was the only perfin.*

Nice find Dave! ♣



CNR perfin on \$5 La Mauricie National Park stamp

# \$5 Moose

The \$5 Moose high-value definitive stamp issued December 19, 2003 was a pleasant addition to the stamp program — both in terms of it's design and a couple of 'hidden' surprises.

- ~ the stamp is the same large size, and issued in panes of 4 stamps, as we first saw on the \$8 Grizzly Bear stamp.
- ~ there are inscriptions in *all* four corners rather than just one corner as seen on the Grizzly. Only philatelic panes are available.
- ~ the pane does *not* have a UPC barcode as we have come to expect on recent Canadian stamp issues (this implies the stamps were *printed* quite sometime ago?).
- ~ there are 'security' features incorporated into the design, including:



- < footprints (blue for the sky and water)
- < micro printing (below the \$5 inscription)
- < the "\$5" inscription is a metallic silver colour that makes it difficult to copy
- < there is an invisible 'Moose', printed in varnish ink (like a watermark), printed above the back of the Moose. This image (similar to that illustrated at right) gives off a white fluorescent glow under ultraviolet light. This same image appears in reverse in the four corners of the pane's selvedge.



- ~ the 'hidden' copyright date on the stamp (reading up in the grass at the lower left corner of the stamp) reads ©1999 [in the last *Corgi Times*, prior to the stamp's release, we suggested that the date was 1998 — our apologies for this error], another indication that this design has been waiting to be released for quite awhile. ♣



Micro-printing and footprints forming the design of the \$5 Moose definitive