

Receipt Printer Driver

These instructions only apply if you are printing receipts to a dot matrix printer onto custom-made, continuous form, 2-part receipts that are 7.25" wide by 3.5" tall.

These instructions are based on Windows 95 or 98.

I believe Windows 2000 and Windows XP work a bit differently. I do not yet have the exact, step-by-step instructions confirmed for these. The concepts seen here should certainly apply to these versions of Windows, however.

You will likely want to print all of your reports to your default printer, whether it be a laser (recommended), ink jet, or dot matrix. All of the reports take advantage of the Windows fonts and graphics capabilities. Printing to a dot matrix printer will result in *very slow* printing because Windows prints the reports *graphically*.

With that said, if you are using continuous form, 2-part receipts (rather than laser generated ones), you will need to add a printer driver to specifically handle the form length/form feeding requirements.

① Install a 'duplicate' printer driver

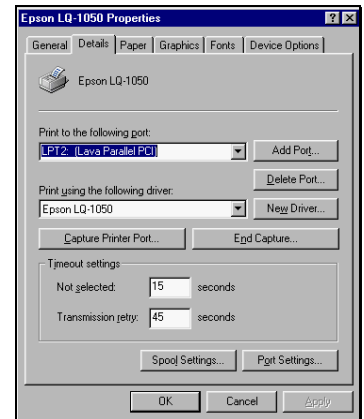
You will already have a dot matrix printer driver installed in Windows that is working just fine (at least we would hope so!). In order to make *Adminware* as generic as possible, we need to create a new printer driver, based on exactly the same driver you are currently using, but call the new printer "AdminwareAC".

- a) open the Printers folder: Start | Settings | Printers

If necessary, first check your existing dot matrix printer to determine the printer driver that is currently installed.

- i) Right-click on the existing driver and choose **Properties** from the menu.
- ii) click the **Details** tab and note the values for the following two options:

- ▶ Print to the following Port
- ▶ Print using the following driver values



- b) click the **Add Printer** icon

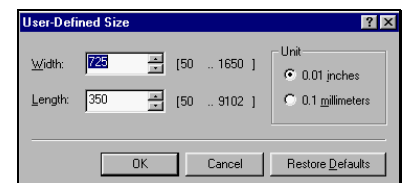
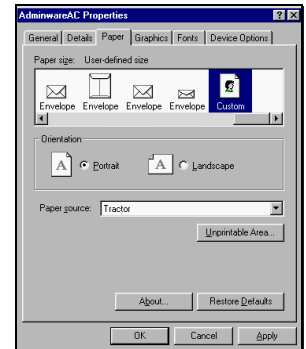
During the Wizard process, you will want to "Keep existing driver" and choose the *same* Port as used by the existing dot matrix printer. The new printer name *must* read AdminwareAC



② Modify the newly created AdminwareAC printer properties

- a) right-click on the AdminwareAC icon and choose Properties from the menu
- b) click the **Paper** tab
- c) find the Custom paper type (at the right end of the scroll list) and click on it
- d) from the User-Defined Size dialog box, change the values, set with the Unit of 0.01 inches, as follows:

- ▶ Width = 725
- ▶ Length = 350



That's it.